

GREENSBORO, NORTH CAROLINA

AL-178 (FAA)

25219

LOC/DME I-LZY 111.9 Chan 56	APP CRS 054°	Rwy Ldg 10001 TDZE 900 Apt Elev 926
---	------------------------	---

ILS or LOC RWY 5R

PIEDMONT TRIAD INTL (GSO)

Simultaneous approach authorized. For inop ALS, increase S-LOC 5R Cat C/D to RVR 6000.
****RVR 1800 authorized with the use of FD or AP or HUD to DA.**

MALSR

MISSED APPROACH: Climb to 1600 then climbing right turn to 3000 on heading 139° and GSO VORTAC R-108 to KIMES INT/GSO 18.8 DME and hold.

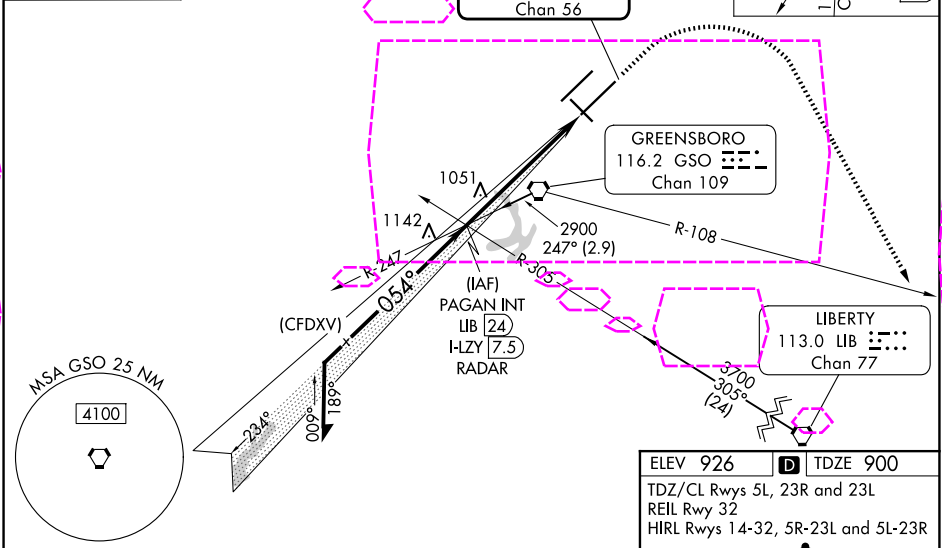
D-ATIS 128.55	GREENSBORO APP CON 124.35 269.225 (250°-049°) 126.6 327.075 (050°-249°)	GREENSBORO TOWER 119.1 290.325	GND CON 121.9 348.6	CLNC DEL 121.75
-------------------------	---	--	-------------------------------	---------------------------

ALTERNATE MISSED APCH FIX

LIBERTY
LIB 113.0
Chan 77

MISSED APCH FIX

116.2 GSO R-108 Chan 109
113.0 LIB Chan 77
KIMES GSO 18.8



VGSI and ILS glidepath not coincident (VGSI Angle 3.00/TCH 70).
Remain within 10 NM

2900	234°	2800	054°	2800
GS 3.00° TCH 53		4.6 NM		1.2 NM
CATEGORY	A	B	C	D
S-ILS 5R **	1100/24		200 (200-½)	
S-LOC 5R	1320/24	420 (400-½)	1320/40	420 (400-¾)
CIRCLING	1440-1	514 (600-1)	1700-2¼ 774 (800-2¼)	1700-2½ 774 (800-2½)

ELEV 926 **D** TDZE 900

TDZ/CL Rwy 5L, 23R and 23L
REIL Rwy 32
HIRL Rwy 14-32, 5R-23L and 5L-23R

TWR

8000 X 150

1000 X 150

0.3% DOWN

0.5% DOWN

054°

FAF to MAP 5.7 NM

Knots	60	90	120	150	180
Min:Sec	5:42	3:48	2:51	2:17	1:54

GREENSBORO, NORTH CAROLINA
Amdt 7D 25JAN24

36°06'N-79°56'W

PIEDMONT TRIAD INTL (GSO)
ILS or LOC RWY 5R

SE-2, 07 AUG 2025 to 04 SEP 2025

SE-2, 07 AUG 2025 to 04 SEP 2025