

GREENSBORO, NORTH CAROLINA

AL-178 (FAA)

24361

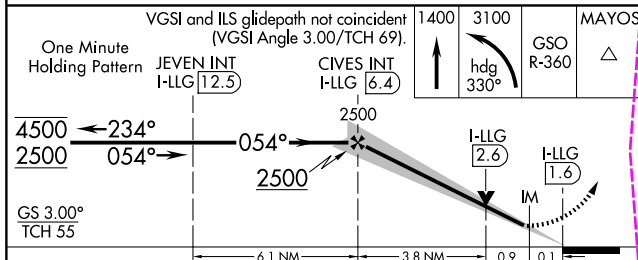
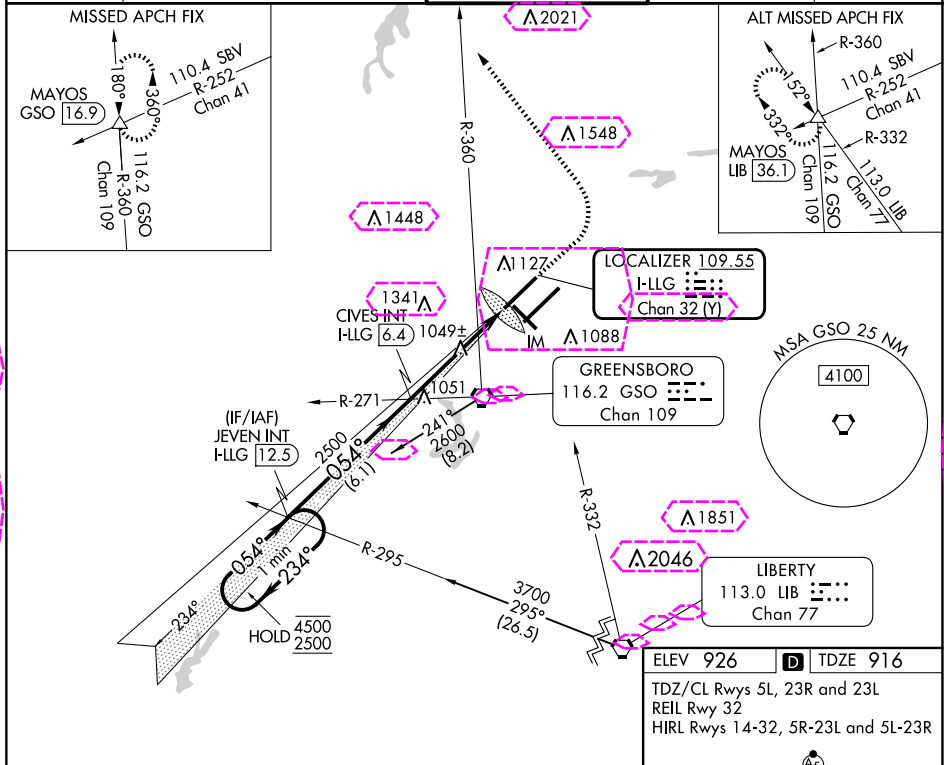
LOC/DME I-LLG	APP CRS	Rwy Idg	9000
109.55	054°	TDZE	916
Chan 32(Y)		Apt Elev	926

ILS or LOC RWY 5L

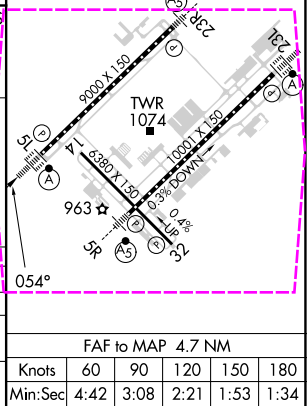
PIEDMONT TRIAD INTL (GSO)

DME or RADAR required for procedure entry at LIB VORTAC.	ALSIF-2	MISSED APPROACH: Climb to 1400 then climbing left turn to 3100 on heading 330° and GSO VORTAC R-360 to MAYOS INT/GSO 16.9 DME and hold.
Simultaneous approach authorized. For inop ALS, increase S-LOC 5L Cat C/D visibility to RVR 5500.		

D-ATIS	GREENSBORO APP CON	GREENSBORO TOWER	GND CON	CLNC DEL
128.55	124.35 269.225 (250°-049°)	119.1 290.325	121.9 348.6	121.75
	126.6 327.075 (050°-249°)			



CATEGORY	A	B	C	D
S-ILS 5L	1116/18	200 (200-1/2)		
S-LOC 5L	1300/24	384 (400-1/2)	1300/35	384 (400-3/4)
CIRCLING	1440-1	514 (600-1)	1700-2 1/4	1700-2 1/2
			774 (800-2 1/4)	774 (800-2 1/2)



GREENSBORO, NORTH CAROLINA
Orig-D 06OCT22

36°06'N-79°56'W

PIEDMONT TRIAD INTL (GSO)

ILS or LOC RWY 5L

SE-2, 10 JUL 2025 to 07 AUG 2025

SE-2, 10 JUL 2025 to 07 AUG 2025

GREENSBORO, NORTH CAROLINA

AL-178 (FAA)

25219

LOC/DME I-LLG	APP CRS	Rwy Ldg	9000
109.55	054°	TDZE	916
Chan 32(Y)		Apt Elev	926

ILS or LOC RWY 5L
PIEDMONT TRIAD INTL (GSO)

DME or RADAR required for procedure entry at LIB VORTAC.

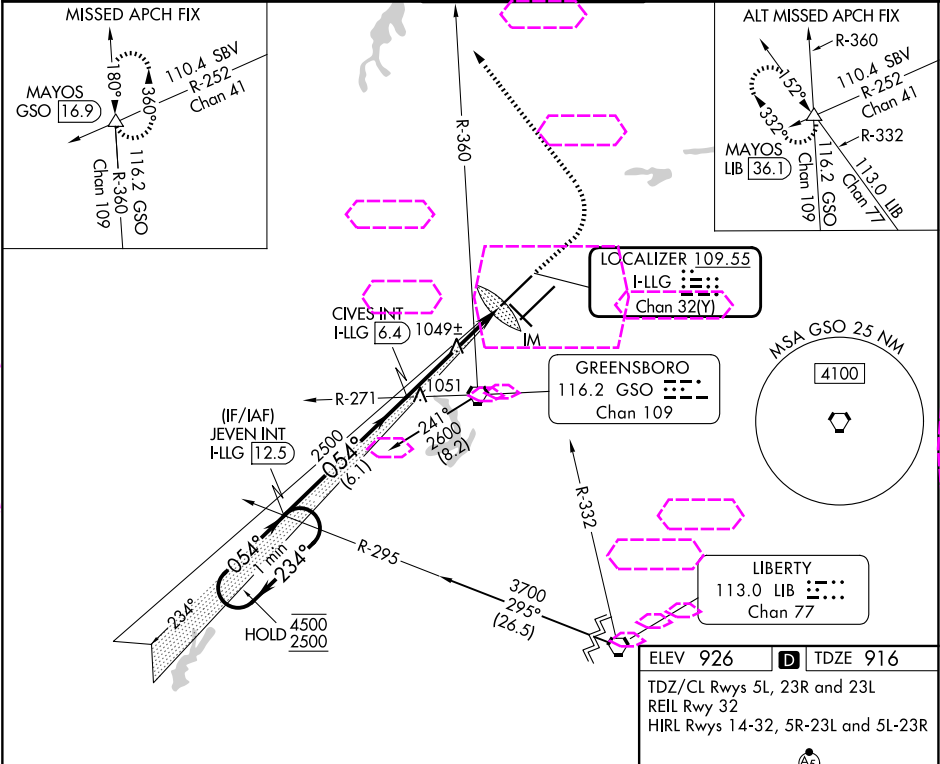
Simultaneous approach authorized. For inop ALS, increase S-LOC 5L Cat C/D visibility to RVR 5500.

ALSF-2

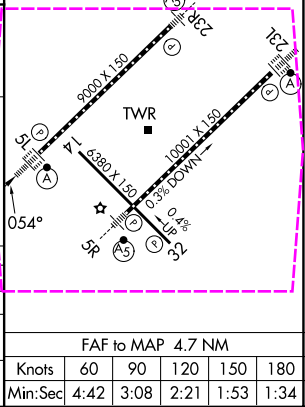


MISSED APPROACH: Climb to 1400 then climbing left turn to 3100 on heading 330° and GSO VORTAC R-360 to MAYOS INT/GSO 16.9 DME and hold.

D-ATIS	GREENSBORO APP CON	GREENSBORO TOWER	GND CON	CLNC DEL
128.55	124.35 269.225 (250°-049°) 126.6 327.075 (050°-249°)	119.1 290.325	121.9 348.6	121.75



VGSI and ILS glidepath not coincident (VGSI Angle 3.00/TCH 69).				
One Minute Holding Pattern				
JEVEN INT I-LLG 12.5				
CIVES INT I-LLG 6.4				
GS 3.00° TCH 55				
6.1 NM 3.8 NM 0.9 0.1				
CATEGORY	A	B	C	D
S-ILS 5L	1116/18		200 (200-½)	
S-LOC 5L	1300/24	384 (400-½)	1300/35	384 (400-¾)
CIRCLING	1440-1	514 (600-1)	1700-2¼ 774 (800-2¼)	1700-2½ 774 (800-2½)



GREENSBORO, NORTH CAROLINA
Orig-D 06OCT22

36°06'N-79°56'W

PIEDMONT TRIAD INTL (GSO)
ILS or LOC RWY 5L

SE-2, 07 AUG 2025 to 04 SEP 2025

SE-2, 07 AUG 2025 to 04 SEP 2025