

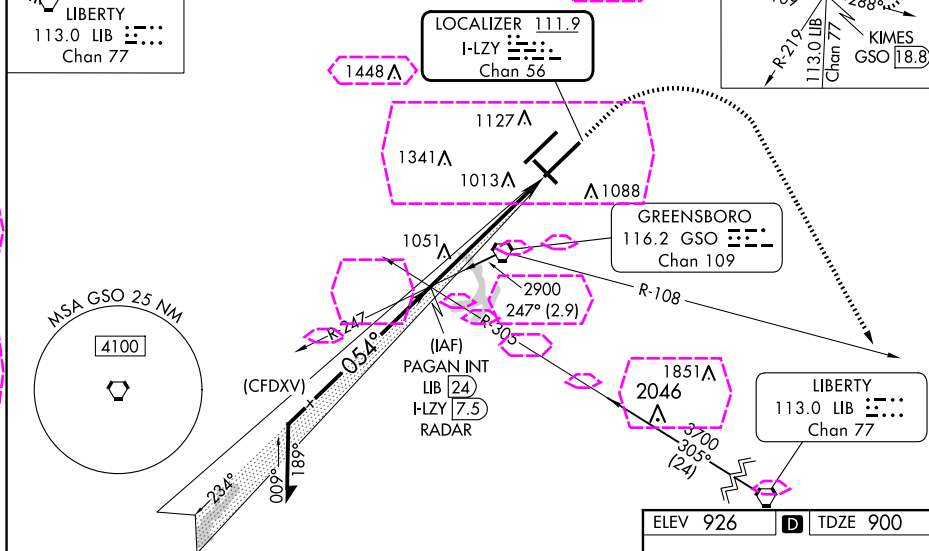
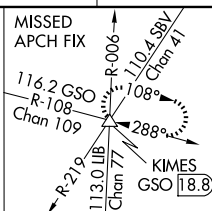
ILS RWY 5R (SA CAT II)  
PIEDMONT TRIAD INTL (GSO)

MALSR

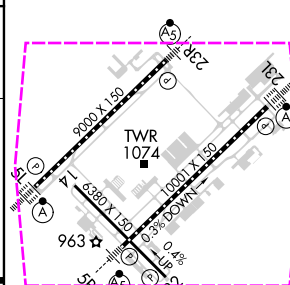
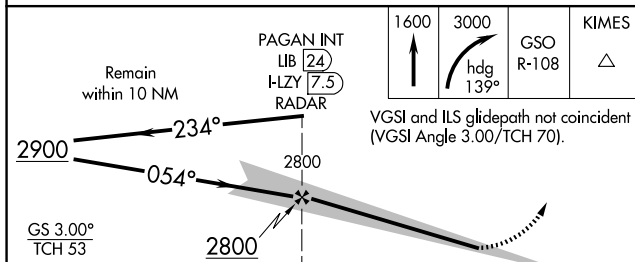
**MISSED APPROACH:** Climb to 1600 then climbing right turn to 3000 on heading 139° and GSO VORTAC R-108 to KIMES INT/ GSO 18.8 DME and hold.

ALTERNATE MISSED  
APCH FIX

LIBERTY  
113.0 LIB  
Chan 77



ELEV 926	<b>D</b>	TDZE 900
----------	----------	----------



CATEGORY	A	B	C	D
S-ILS 5R	RA 122/12 100 DA 1000			

SA CATEGORY II ILS - SPECIAL AIRCREW  
& AIRCRAFT CERTIFICATION REQUIRED

TDZ/CL Rwy 5L, 23R and 23L  
REIL Rwy 32  
HIRL Rwy 14-32, 5R-23L and

GREENSBORO, NORTH CAROLINA

AL-178 (FAA)

25219

LOC/DME I-LZY	APP CRS	Rwy Ldg
<b>111.9</b>	<b>054°</b>	<b>10001</b>
Chan <b>56</b>		TDZE <b>900</b>
		Apt Elev <b>926</b>

# ILS RWY 5R (SA CAT II)

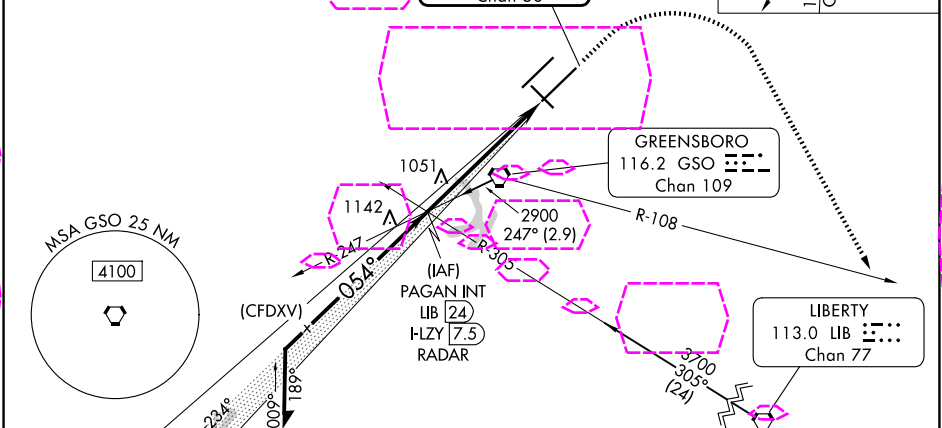
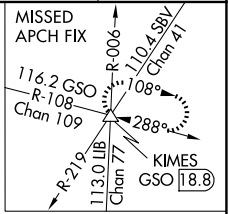
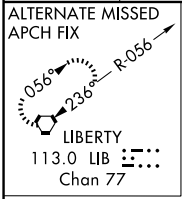
PIEDMONT TRIAD INTL (GSO)

Simultaneous approach authorized.  
REDUCED LIGHTING: Requires specific OPSPEC, MSPEC, or LOA approval and use of autoland or HUD to touchdown.

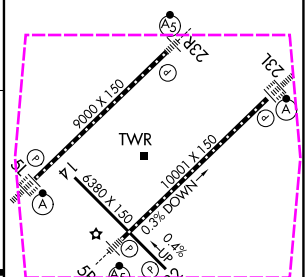
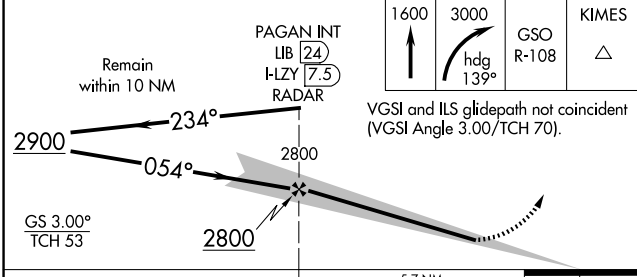
MALSR

MISSED APPROACH: Climb to 1600 then climbing right turn to 3000 on heading 139° and GSO VORTAC R-108 to KIMES INT/ GSO 18.8 DME and hold.

D-ATIS	GREENSBORO APP CON	GREENSBORO TOWER	GND CON	CLNC DEL
<b>128.55</b>	<b>124.35 269.225</b> (250°-049°)	<b>119.1 290.325</b>	<b>121.9 348.6</b>	<b>121.75</b>
	<b>126.6 327.075</b> (050°-249°)			



ELEV 926	D	TDZE 900
----------	---	----------



CATEGORY	A	B	C	D
S-ILS 5R		RA 122/12 100 DA 1000		

## SA CATEGORY II ILS - SPECIAL AIRCREW & AIRCRAFT CERTIFICATION REQUIRED

TDZ/CL Rwy 5L, 23R and 23L  
REIL Rwy 32  
HIRL Rwy 14-32, 5R-23L and 5L-23R

GREENSBORO, NORTH CAROLINA  
Amdt 7D 25JAN24

36°06'N-79°56'W

## PIEDMONT TRIAD INTL (GSO) ILS RWY 5R (SA CAT II)

SE-2, 07 AUG 2025 to 04 SEP 2025

SE-2, 07 AUG 2025 to 04 SEP 2025