

GREENSBORO, NORTH CAROLINA

AL-178 (FAA)

24361

LOC/DME I-LLG	APP CRS	Rwy Idg	9000
109.55	054°	TDZE	916
Chan 32(Y)		Apt Elev	926

# ILS RWY 5L (CAT II & III)

PIEDMONT TRIAD INTL (GSO)

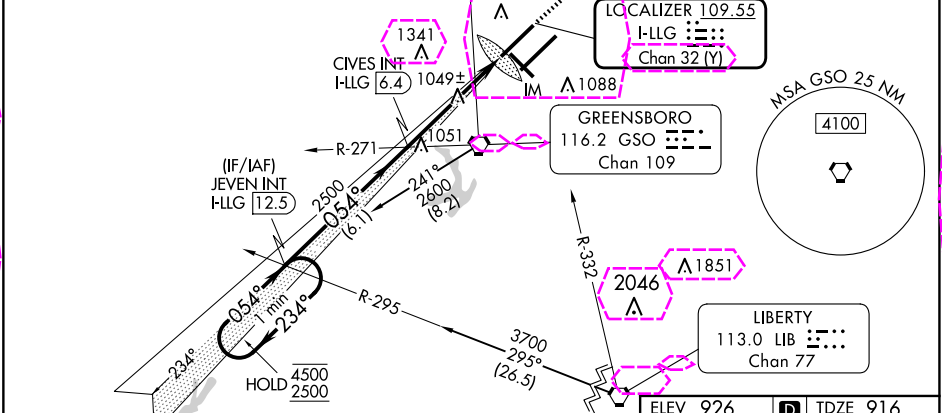
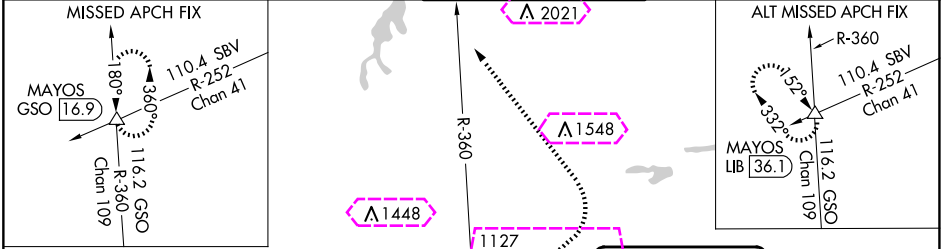
DME or RADAR required for procedure entry at LIB VORTAC.



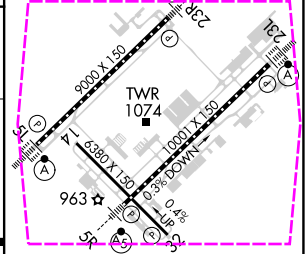
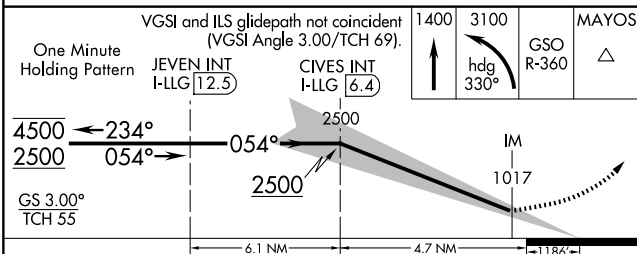
MISSED APPROACH: Climb to 1400 then climbing left turn to 3100 on heading 330° and GSO VORTAC R-360 to MAYOS INT/GSO 16.9 DME and hold.

Simultaneous approach authorized.

D-ATIS	GREENSBORO APP CON	GREENSBORO TOWER	GND CON	CLNC DEL
128.55	124.35 269.225 (250°-049°)	119.1 290.325	121.9 348.6	121.75
	126.6 327.075 (050°-249°)			



ELEV 926	TDZE 916
----------	----------



CATEGORY	A	B	C	D
S-ILS 5L	CAT II RA 113/12 100 DA 1016			
S-ILS 5L	CAT III RVR 06			

## CATEGORY II & III ILS - SPECIAL AIRCREW & AIRCRAFT CERTIFICATION REQUIRED

GREENSBORO, NORTH CAROLINA  
Orig-D 06OCT22

36°06'N-79°56'W

PIEDMONT TRIAD INTL (GSO)  
ILS RWY 5L (CAT II & III)

SE-2, 10 JUL 2025 to 07 AUG 2025

SE-2, 10 JUL 2025 to 07 AUG 2025

GREENSBORO, NORTH CAROLINA

AL-178 (FAA)

25219

LOC/DME I-LLG	APP CRS	Rwy Ldg	9000
109.55	054°	TDZE	916
Chan 32(Y)		Apt Elev	926

# ILS RWY 5L (CAT II & III)

PIEDMONT TRIAD INTL (GSO)

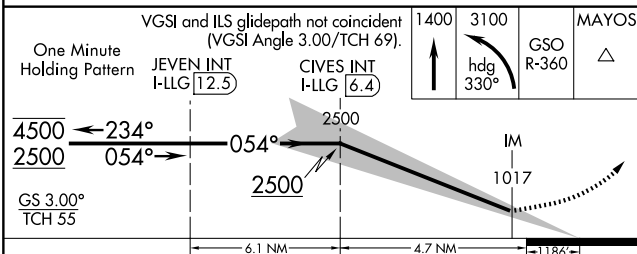
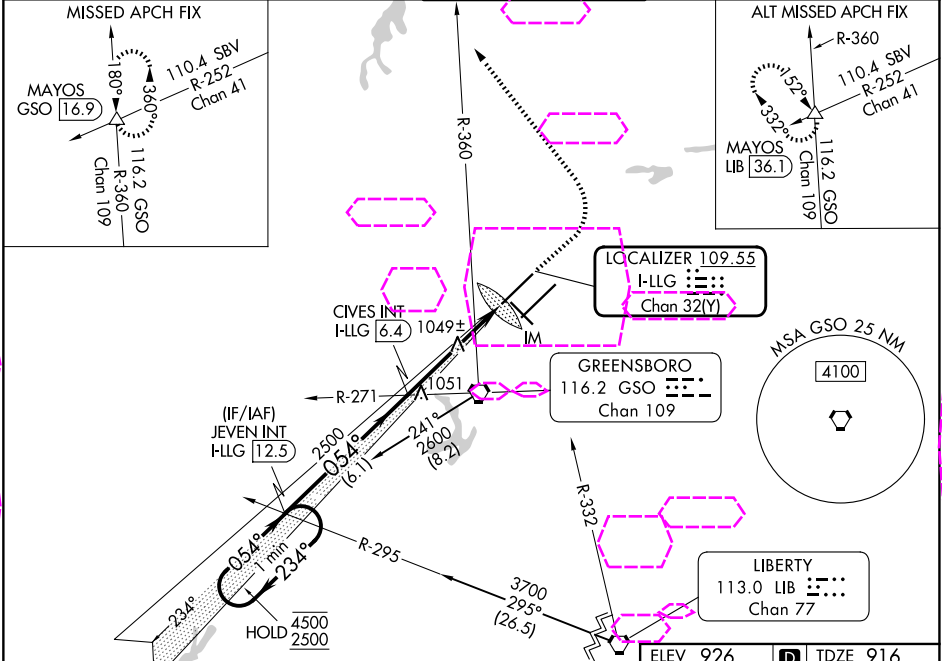
DME or RADAR required for procedure entry at LIB VORTAC.



MISSED APPROACH: Climb to 1400 then climbing left turn to 3100 on heading 330° and GSO VORTAC R-360 to MAYOS INT/GSO 16.9 DME and hold.

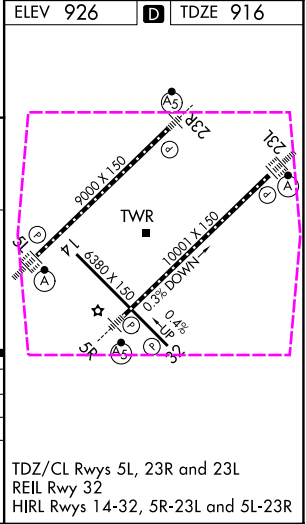
Simultaneous approach authorized.

D-ATIS	GREENSBORO APP CON	GREENSBORO TOWER	GND CON	CLNC DEL
128.55	124.35 269.225 (250°-049°)	119.1 290.325	121.9 348.6	121.75
	126.6 327.075 (050°-249°)			



CATEGORY	A	B	C	D
S-ILS 5L	CAT II RA 113/12 100 DA 1016			
S-ILS 5L	CAT III RVR 06			

## CATEGORY II & III ILS - SPECIAL AIRCREW & AIRCRAFT CERTIFICATION REQUIRED



GREENSBORO, NORTH CAROLINA  
Orig-D 06OCT22

36°06'N-79°56'W

PIEDMONT TRIAD INTL (GSO)  
ILS RWY 5L (CAT II & III)

SE-2, 07 AUG 2025 to 04 SEP 2025

SE-2, 07 AUG 2025 to 04 SEP 2025