

(SHAIN.SHAIN2) 24361

AL-166

## SHAIN TWO ARRIVAL(RNAV) Transition Routes

CHICAGO O'HARE INTL (ORD)  
CHICAGO, ILLINOISCHICAGO APP COM  
119.0 292.125  
D-ATIS  
135.4 282.225See following page for  
Arrival RoutesSHAIN  
12000

BFORD TRANSITION (BFORD.SHAIN2)  
 CASHN TRANSITION (CASHN.SHAIN2)  
 DRAMS TRANSITION (DRAMS.SHAIN2)  
 FORISTELL TRANSITION (FTZ.SHAIN2)  
 KIRKSVILLE TRANSITION (IRK.SHAIN2)  
 LOAMY TRANSITION (LOAMY.SHAIN2)  
 PNTAC TRANSITION (PNTAC.SHAIN2)  
 ST LOUIS TRANSITION (STL.SHAIN2)  
 TRIDE TRANSITION (TRIDE.SHAIN2)  
 VINCA TRANSITION (VINCA.SHAIN2)  
 WELTS TRANSITION (WELTS.SHAIN2)

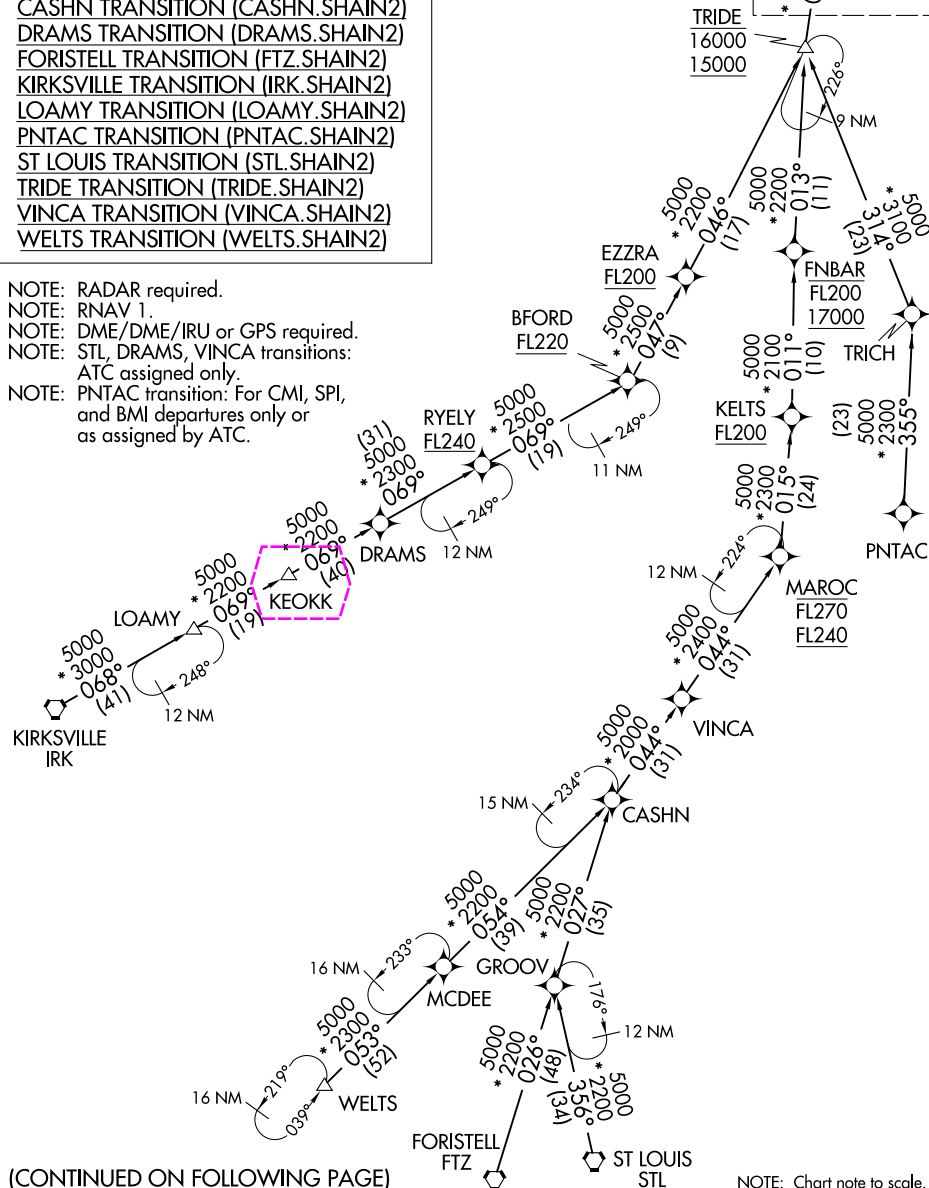
NOTE: RADAR required.

NOTE: RNAV 1.

NOTE: DME/DME/IRU or GPS required.

NOTE: STL, DRAMS, VINCA transitions:

ATC assigned only.

NOTE: PNTAC transition: For CMI, SPI,  
and BMI departures only or  
as assigned by ATC.

(CONTINUED ON FOLLOWING PAGE)

NOTE: Chart note to scale.

## SHAIN TWO ARRIVAL(RNAV) Transition Routes

(SHAIN.SHAIN2) 05NOV20

CHICAGO, ILLINOIS  
CHICAGO O'HARE INTL (ORD)

EC-3, 10 JUL 2025 to 07 AUG 2025

EC-3, 10 JUL 2025 to 07 AUG 2025

(SHAIN.SHAIN2) 25219

## SHAIN TWO ARRIVAL(RNAV) Transition Routes

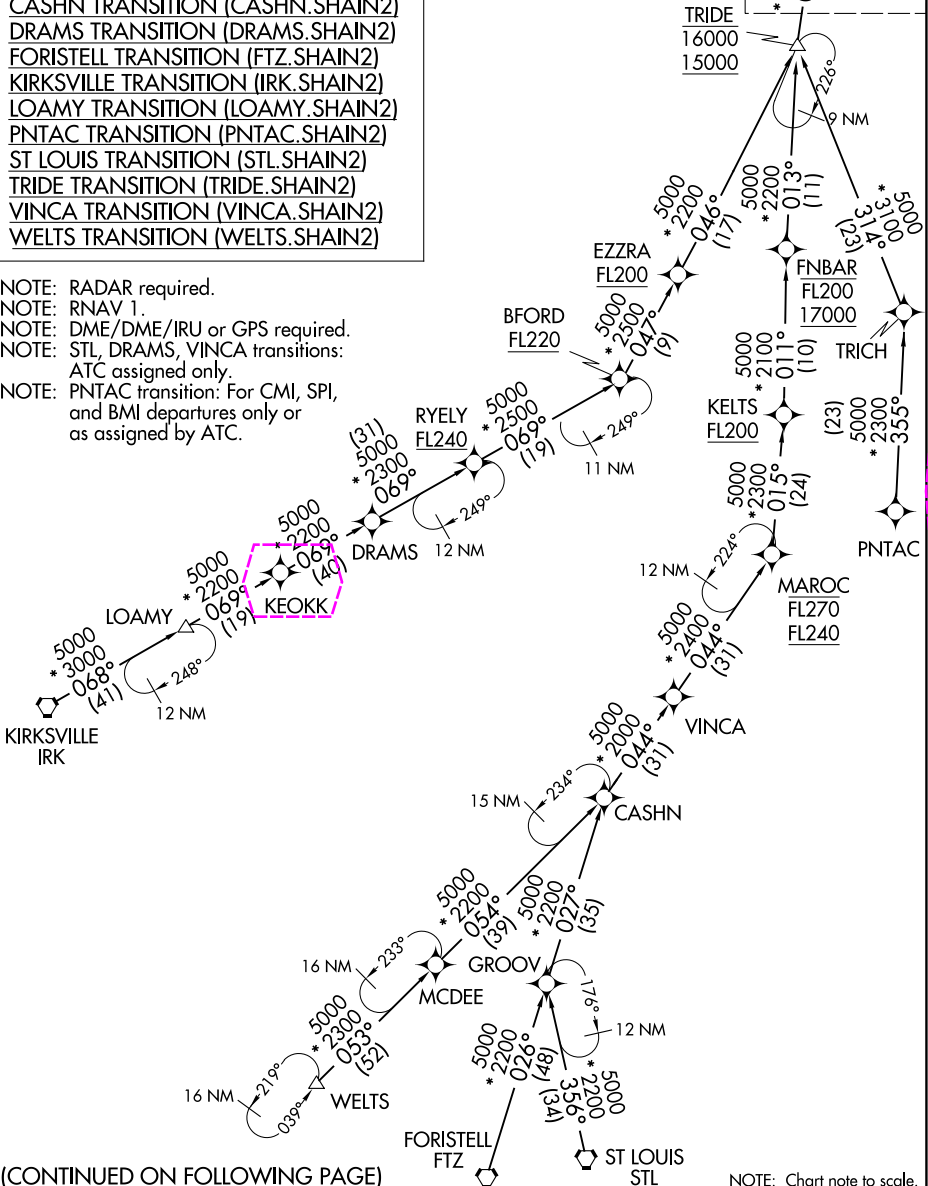
CHICAGO O'HARE INTL (ORD)  
CHICAGO, ILLINOISCHICAGO APP CON  
119.0 292.125  
D-ATIS  
135.4 282.225See following page for  
Arrival RoutesSHAIN  
12000

BFORD TRANSITION (BFORD.SHAIN2)  
 CASHN TRANSITION (CASHN.SHAIN2)  
 DRAMS TRANSITION (DRAMS.SHAIN2)  
 FORISTELL TRANSITION (FTZ.SHAIN2)  
 KIRKSVILLE TRANSITION (IRK.SHAIN2)  
 LOAMY TRANSITION (LOAMY.SHAIN2)  
 PNTAC TRANSITION (PNTAC.SHAIN2)  
 ST LOUIS TRANSITION (STL.SHAIN2)  
 TRIDE TRANSITION (TRIDE.SHAIN2)  
 VINCA TRANSITION (VINCA.SHAIN2)  
 WELTS TRANSITION (WELTS.SHAIN2)

NOTE: RADAR required.

NOTE: RNAV 1.

NOTE: DME/DME/IRU or GPS required.

NOTE: STL, DRAMS, VINCA transitions:  
ATC assigned only.NOTE: PNTAC transition: For CMI, SPI,  
and BMI departures only or  
as assigned by ATC.

(CONTINUED ON FOLLOWING PAGE)

NOTE: Chart note to scale.

## SHAIN TWO ARRIVAL(RNAV) Transition Routes

(SHAIN.SHAIN2) 05NOV20

CHICAGO, ILLINOIS  
CHICAGO O'HARE INTL (ORD)

EC-3, 07 AUG 2025 to 04 SEP 2025

EC-3, 07 AUG 2025 to 04 SEP 2025