

GALVESTON, TEXAS

AL-164 (FAA)

24305

VOR/DME VUH <b>113.0</b> Chan <b>77</b>	APP CRS <b>143°</b>	Rwy Idg <b>6000</b> TDZE <b>5</b> Apt Elev <b>6</b>
---	------------------------	---

# VOR RWY 14

SCHOLES INTL AT GALVESTON (GLS)

DME and RADAR required.

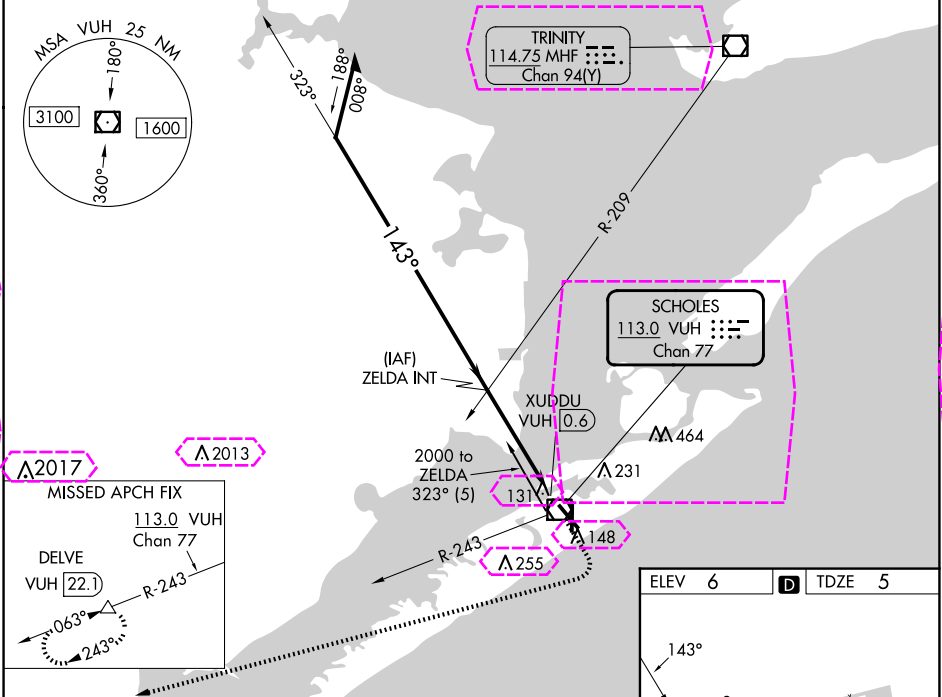
NA

Circling NA east of Rwy 18 and northeast of Rwy 32.

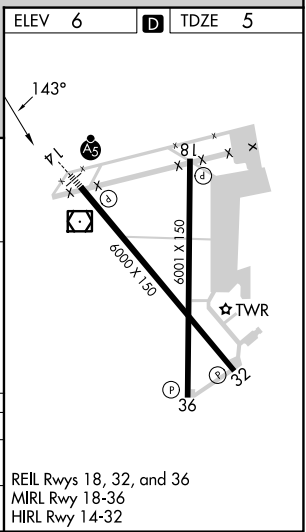
MALSR

MISSED APPROACH: Climb to 1200 then climbing right turn to 3000 on heading 284° and VUH VOR/DME R-243 to DELVE/22.1 DME and hold.

ASOS <b>123.95</b>	HOUSTON APP CON <b>134.45 284.0</b>	GALVESTON TOWER ★ <b>120.575</b> (CTAF) <b>0</b>	GND CON <b>118.625</b>	CLNC DEL <b>135.35</b> (When twr closed)	UNICOM <b>123.05</b>
-----------------------	--	---	---------------------------	--	-------------------------



Remain within 15 NM	ZELDA INT	1200	3000	VUH	DELVE
2000	323°	143°	hdg 284°	R-243	△
1600	2.98°	TCH 52	VUH 1.4	XUDDU VUH 0.6	VUH VOR/DME
3.6 NM	0.8	0.5			
CATEGORY	A	B	C	D	E
S-14	460-1/2	455 (500-1/2)	460-7/8	455 (500-7/8)	
CIRCLING	500-1 494 (500-1)	520-1 514 (600-1)	620-13/4 614 (700-13/4)	620-2 614 (700-2)	620-21/4 614 (700-21/4)



GALVESTON, TEXAS  
Amdt 4D 02DEC21

29°16'N-94°52'W

SCHOLES INTL AT GALVESTON (GLS)  
VOR RWY 14

SC-5, 10 JUL 2025 to 07 AUG 2025

SC-5, 10 JUL 2025 to 07 AUG 2025

GALVESTON, TEXAS

AL-164 (FAA)

25219

VOR/DME VUH <b>113.0</b> Chan <b>77</b>	APP CRS <b>143°</b>	Rwy Ldg <b>6000</b> TDZE <b>5</b> Apt Elev <b>6</b>
---	------------------------	---

# VOR RWY 14

SCHOLES INTL AT GALVESTON (GLS)

DME and RADAR required.

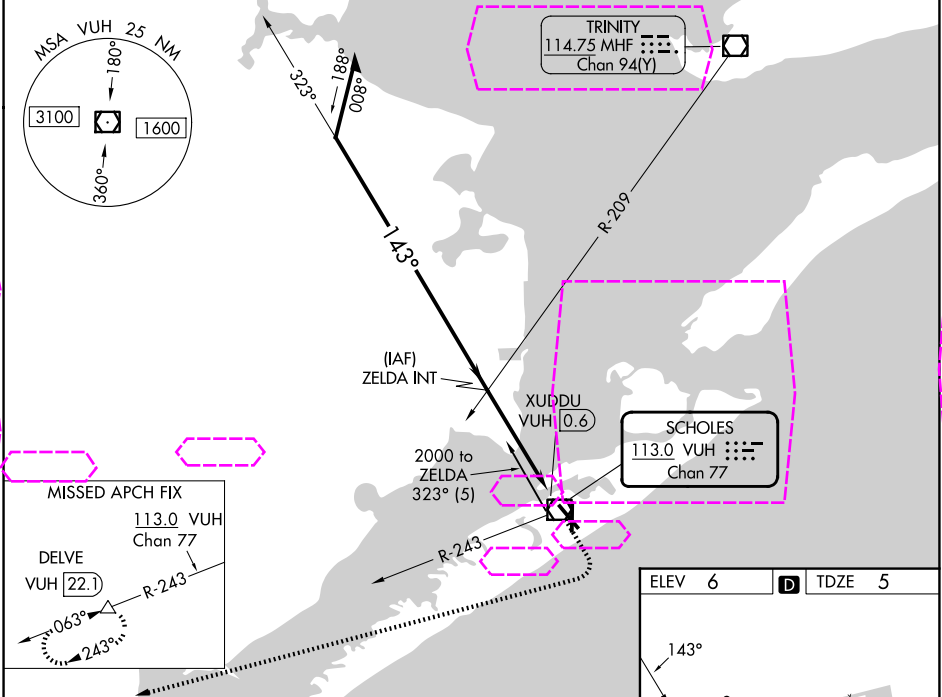
NA

Circling NA east of Rwy 18 and northeast of Rwy 32.

MALSR

MISSED APPROACH: Climb to 1200 then climbing right turn to 3000 on heading 284° and VUH VOR/DME R-243 to DELVE/22.1 DME and hold.

ASOS <b>123.95</b>	HOUSTON APP CON <b>134.45 284.0</b>	GALVESTON TOWER ★ <b>120.575</b> (CTAF) <b>0</b>	GND CON <b>118.625</b>	CLNC DEL <b>135.35</b> (When twr closed)	UNICOM <b>123.05</b>
-----------------------	--	---	---------------------------	--	-------------------------



Remain within 15 NM

ZELDA INT

2000

323°

143°

1600

2.98°

TCH 52

3.6 NM

0.8

0.5

VUH 1.4

XUDDU VUH 0.6

VUH VOR/DME

1200

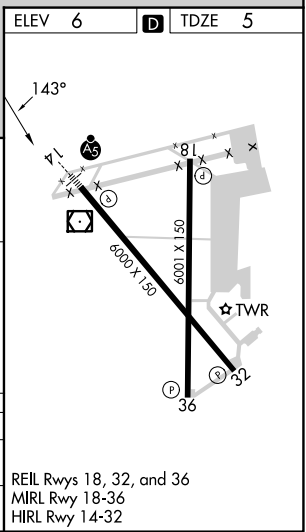
3000

hdg 284°

VUH R-243

DELVE

CATEGORY	A	B	C	D	E
S-14	460-½	455 (500-½)	460-⅞	455 (500-⅞)	
CIRCLING	500-1 494 (500-1)	520-1 514 (600-1)	620-1¾ 614 (700-1¾)	620-2 614 (700-2)	620-2¼ 614 (700-2¼)



GALVESTON, TEXAS  
Amdt 4D 02DEC21

29°16'N-94°52'W

SCHOLES INTL AT GALVESTON (GLS)  
VOR RWY 14

SC-5, 07 AUG 2025 to 04 SEP 2025

SC-5, 07 AUG 2025 to 04 SEP 2025