



GALVESTON, TEXAS

AL-164 (FAA)

25219

WAAS CH <b>48831</b> <b>W36A</b>	APP CRS <b>359°</b>	Rwy Ldg <b>6001</b> TDZE <b>5</b> Apt Elev <b>6</b>
--	------------------------	---

# RNAV (GPS) RWY 36

## SCHOLES INTL AT GALVESTON (GLS)

**T** When VGSI inop, Straight-in/Circling Rwy 36 procedure NA at night. Circling NA east of Rwy 18 and northeast of Rwy 32. DME/DME RNP-0.3 NA. Helicopter visibility reduction below 1 SM NA. **A** When local altimeter setting not received, use William P Hobby altimeter setting; increase all MDA 80 feet. Increase LP Cat C/D/E visibility  $\frac{1}{2}$  SM, LNAV Cat C/D/E visibility  $\frac{1}{2}$  SM and Circling Cat C/D/E visibility  $\frac{1}{4}$  SM.

**MISSED APPROACH:**  
Climb to 800 then  
climbing right turn to  
2000 direct BOLOS  
and hold.

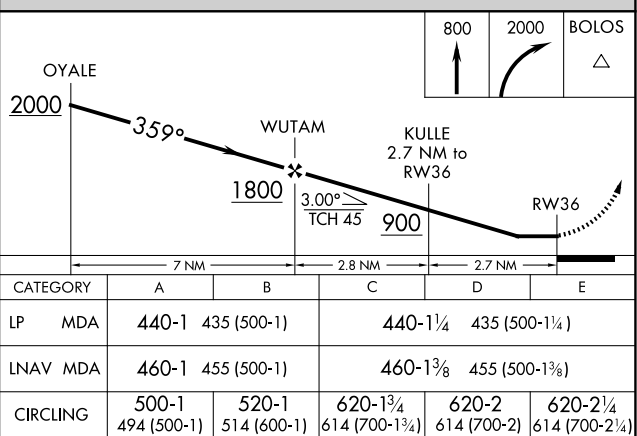
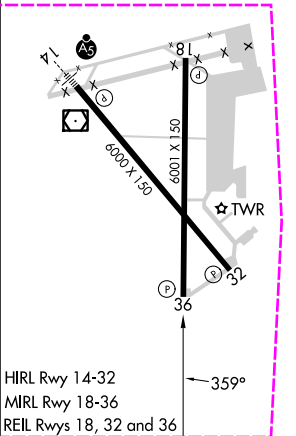
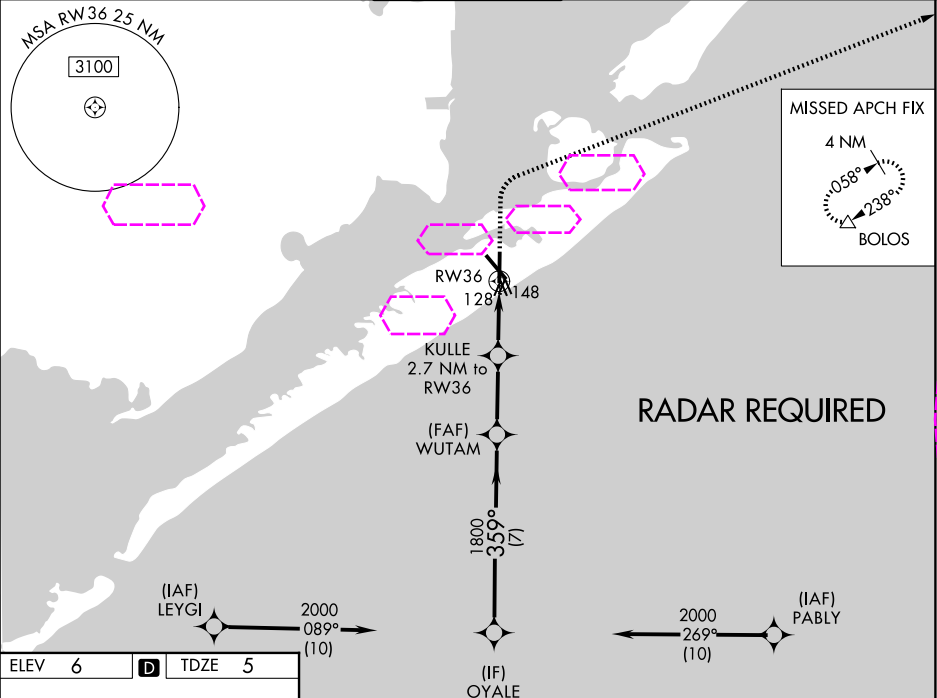
ASOS  
**123.95**

HOUSTON APP CON  
134.45 284.0

**GALVESTON TOWER ★**  
**120.575 (CTAF) L**

GND CON  
118.625

CLNC DEL  
**135.35**  
Dall'800 al 1000

UNICOM  
123.05

GALVESTON, TEXAS  
Amdt 1B 02DEC21

SCHOLES INTL AT GALVESTON (GLS)  
RNAV (GPS) RWY 36

29°16'N-94°52'W

SC-5, 07 AUG 2025 to 04 SEP 2025

SC-5, 07 AUG 2025 to 04 SEP 2025