

GALVESTON, TEXAS

AL-164 (FAA)

22083

WAAS CH <b>40101</b> <b>W32A</b>	APP CRS <b>318°</b>	Rwy Idg TDZE Apt Elev	<b>6000</b> <b>5</b> <b>6</b>
--	------------------------	-----------------------------	-------------------------------------

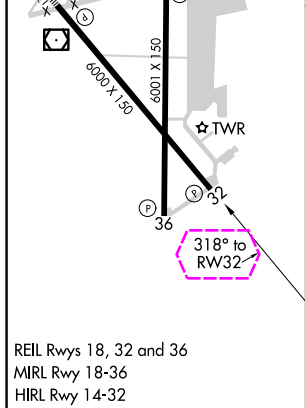
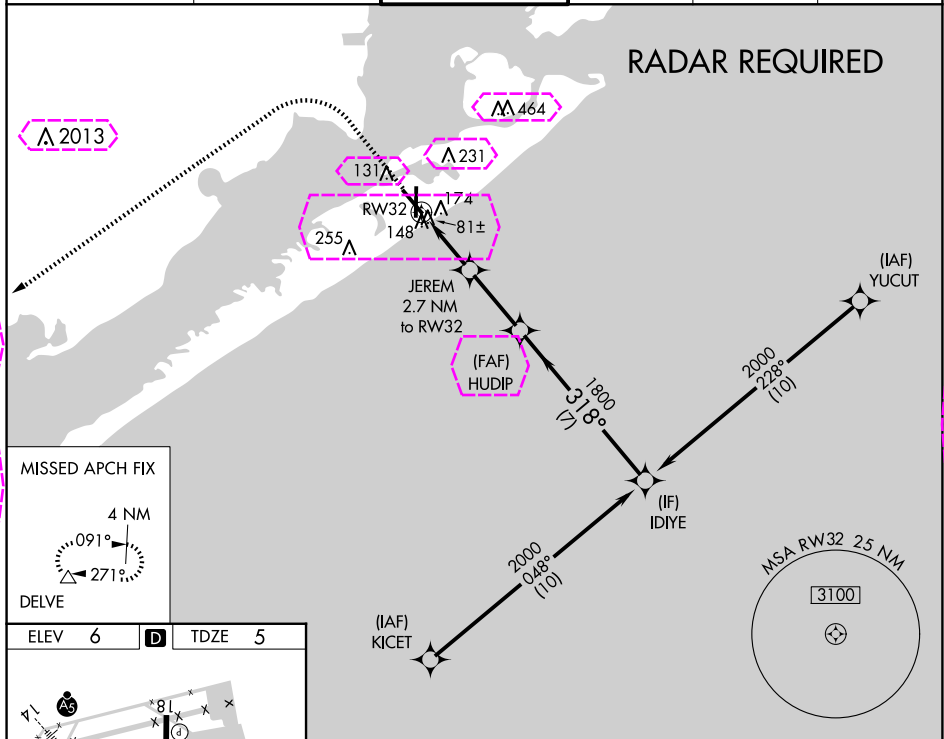
# RNAV (GPS) RWY 32








## SCHOLES INTL AT GALVESTON (GLS)

**⚠** Circling NA east of Rwy 18 and northeast of Rwy 32. DME/DME RNP-0.3 NA. Helicopter visibility reduction below  $\frac{3}{4}$  SM NA. VDP NA with William P Hobby altimeter setting. When local altimeter setting not received, use William P Hobby altimeter setting; increase all MDA 80 feet. Increase LP Cat C/D/E visibility  $\frac{1}{8}$  SM, increase LNAV Cat C/D/E visibility  $\frac{1}{8}$  SM and increase Circling Cat C/D/E visibility  $\frac{1}{4}$  SM.

**MISSED APPROACH:** Climb to 800 then climbing left turn to 3000 direct DELVE and hold.

ASOS <b>123.95</b>	HOUSTON APP CON <b>134.45 284.0</b>	GALVESTON TOWER ★ <b>120.575</b> (CTAF) <b>0</b>	GND CON <b>118.625</b>	CLNC DEL <b>135.35</b> (When twr closed)	UNICOM <b>123.05</b>
-----------------------	--	---	---------------------------	--	-------------------------



800		3000		DELVE		IDIYE	
							
RW32		0.9 NM to RW32		JEREM 2.7 NM to RW32		HUDIP	
							
		900		1800		2000	
0.9 NM		1.8 NM		2.8 NM		7 NM	
CATEGORY		A		B		C	
LP MDA		340-1		335 (400-1)		D	
LNAV MDA		440-1 435 (500-1)		440-1¼ 435 (500-1¼)		E	
CIRCLING		500-1 494 (500-1)		520-1 514 (600-1)		620-1¾ 614 (700-1¾)	
						620-2 614 (700-2)	
						620-2¼ 614 (700-2¼)	

GALVESTON, TEXAS  
Amdt 1B 02DEC21

29°16'N-94°52'W

SCHOLES INTL AT GALVESTON (GLS)  
RNAV (GPS) RWY 32

SC-5, 10 JUL 2025 to 07 AUG 2025

SC-5, 10 JUL 2025 to 07 AUG 2025

GALVESTON, TEXAS

AL-164 (FAA)

25219

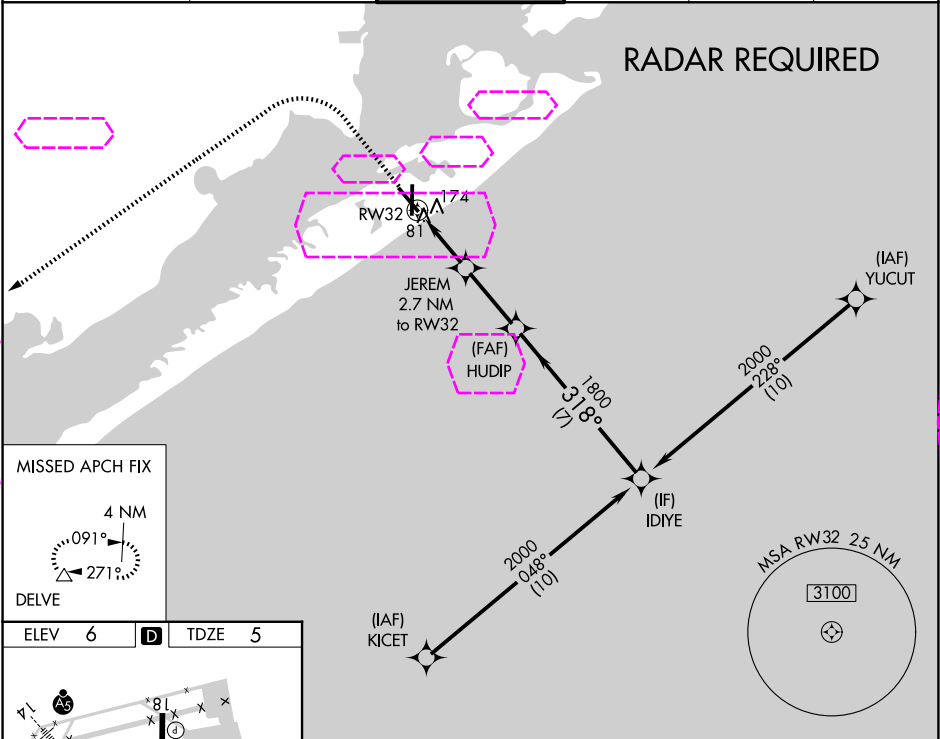
WAAS CH <b>40101</b> <b>W32A</b>	APP CRS <b>318°</b>	Rwy Ldg TDZE Apt Elev	<b>6000</b> <b>5</b> <b>6</b>
--	------------------------	-----------------------------	-------------------------------------

**RNAV (GPS) RWY 32**  
SCHOLLES INTL AT GALVESTON (GLS)

**⚠** Circling NA east of Rwy 18 and northeast of Rwy 32. DME/DME RNP-0.3 NA. Helicopter visibility reduction below  $\frac{3}{4}$  SM NA. VDP NA with William P Hobby altimeter setting. When local altimeter setting not received, use William P Hobby altimeter setting; increase all MDA 80 feet. Increase LP Cat C/D/E visibility  $\frac{1}{8}$  SM, increase LNAV Cat C/D/E visibility  $\frac{1}{8}$  SM and increase Circling Cat C/D/E visibility  $\frac{1}{4}$  SM.

**MISSED APPROACH:** Climb to 800 then climbing left turn to 3000 direct DELVE and hold.

ASOS <b>123.95</b>	HOUSTON APP CON <b>134.45 284.0</b>	GALVESTON TOWER ★ <b>120.575</b> (CTAF) <b>0</b>	GND CON <b>118.625</b>	CLNC DEL <b>135.35</b> (When twr closed)	UNICOM <b>123.05</b>
-----------------------	--	---	---------------------------	--	-------------------------



GALVESTON, TEXAS  
Amdt 1B 02DEC21

29°16'N-94°52'W

SCHOLLES INTL AT GALVESTON (GLS)  
**RNAV (GPS) RWY 32**

SC-5, 07 AUG 2025 to 04 SEP 2025

SC-5, 07 AUG 2025 to 04 SEP 2025