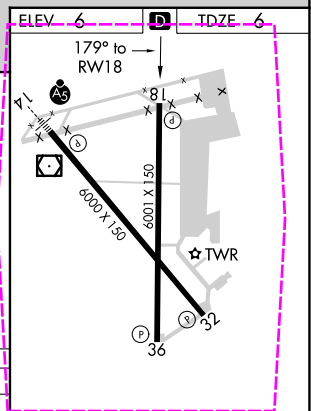
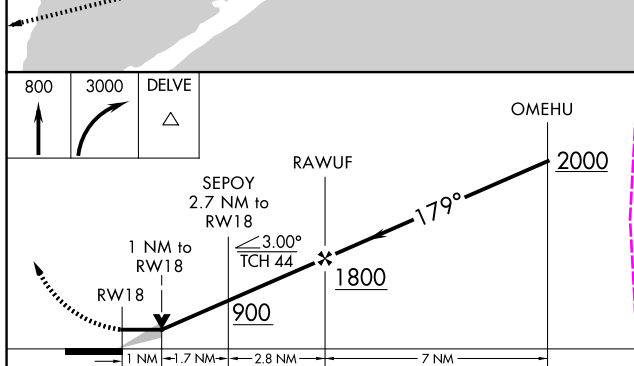
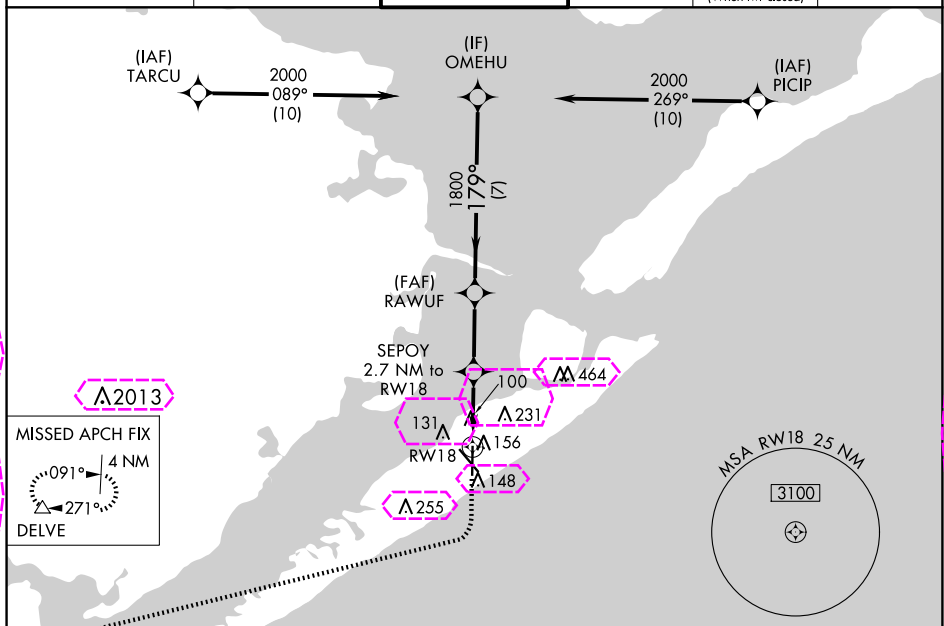


RNAV (GPS) RWY 18
SCHOLES INTL AT GALVESTON (GLS)

MISSED APPROACH: Climb to 800 then climbing right turn to 3000 direct DELVE and hold.

UNICOM
123.05

CATEGORY	A	B	C	D	E
LP MDA	360-1 354 (400-1)				
LNAV MDA	420-1	414 (500-1)	420-1 $\frac{1}{8}$	414 (500-1 $\frac{1}{8}$)	
CIRCLING	500-1 494 (500-1)	520-1 514 (600-1)	620-1 $\frac{3}{4}$ 614 (700-1 $\frac{3}{4}$)	620-2 614 (700-2)	620-2 $\frac{1}{4}$ 614 (700-2 $\frac{1}{4}$)

REIL Rwy 18, 32 and 36
MIRL Rwy 18-36
HIRL Rwy 14-32

SC-5, 10 JUL 2025 to 07 AUG 2025

GALVESTON, TEXAS

AL-164 (FAA)

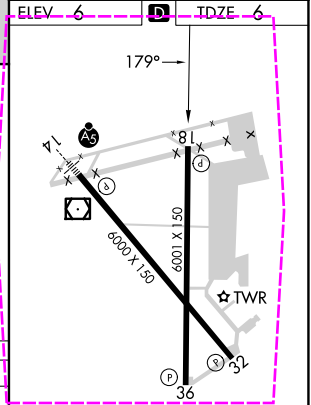
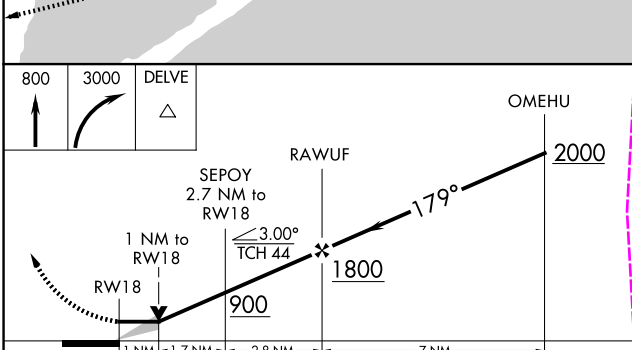
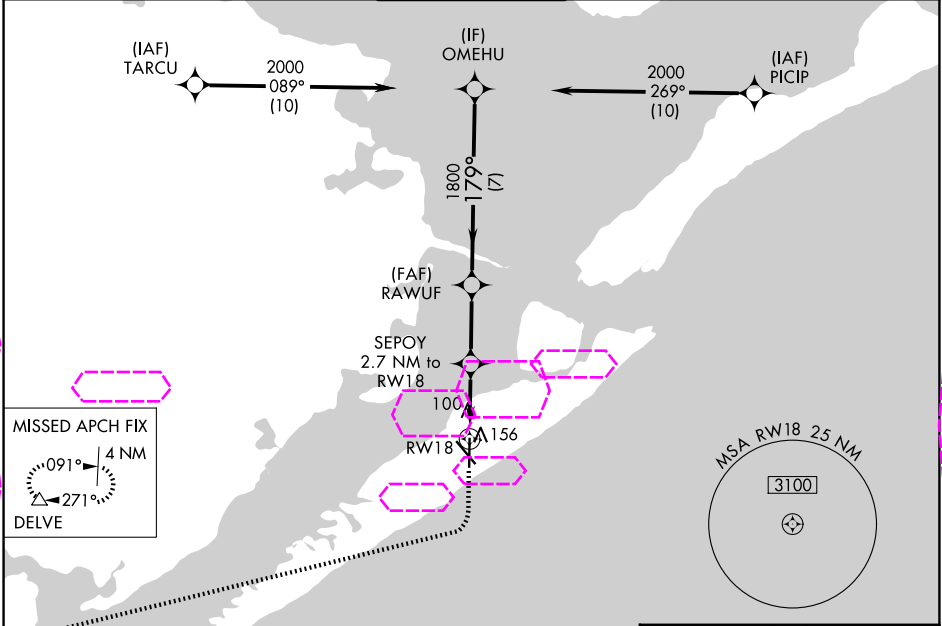
25219

WAAS CH 82301 W18A	APP CRS 179°	Rwy Ldg TDZE Apt Elev	6001 6 6
--	------------------------	-----------------------------	-------------------------------------

RNAV (GPS) RWY 18

SCHOLES INTL AT GALVESTON (GLS)

RNP APCH.		MISSED APPROACH: Climb to 800 then climbing right turn to 3000 direct DELVE and hold.		
Circling NA east of Rwy 18 and northeast of Rwy 32.				
ASOS 123.95	HOUSTON APP CON 134.45 284.0	GALVESTON TOWER ★ 120.575 (CTAF)	GND CON 118.625	CLNC DEL 135.35 (When twr closed)
			UNICOM 123.05	



CATEGORY	A	B	C	D	E
LP MDA	360-1 354 (400-1)				
LNAV MDA	420-1	414 (500-1)	420-1 1/8	414 (500-1 1/8)	
CIRCLING	500-1 494 (500-1)	520-1 514 (600-1)	620-1 3/4 614 (700-1 3/4)	620-2 614 (700-2)	620-2 1/4 614 (700-2 1/4)

REIL Rwy 18, 32 and 36
MIRL Rwy 18-36
HIRL Rwy 14-32

GALVESTON, TEXAS
Amdt 2C 02DEC21

29°16'N-94°52'W

SCHOLES INTL AT GALVESTON (GLS)

RNAV (GPS) RWY 18

SC-5, 07 AUG 2025 to 04 SEP 2025

SC-5, 07 AUG 2025 to 04 SEP 2025