

LOC I-GLS <b><u>111.7</u></b>	APP CRS <b>138°</b>	Rwy Idg <b>6000</b> TDZE <b>5</b> Apt Elev <b>6</b>
----------------------------------	------------------------	---

ILS or LOC RWY 14  
SCHOLES INTL AT GALVESTON (GLS)

RADAR required for procedure entry at UCENU.

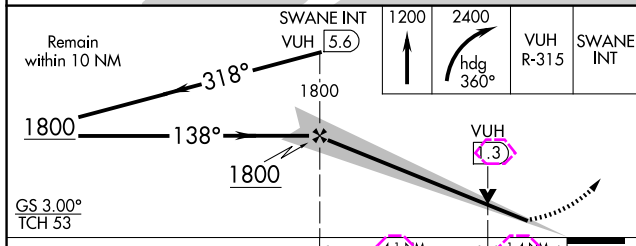
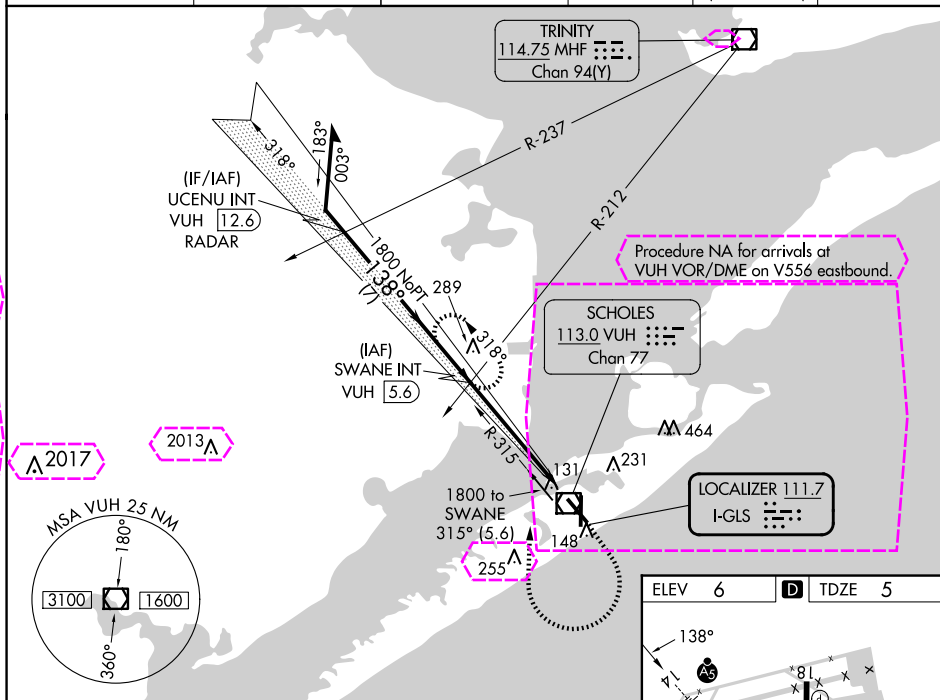
**T** Circling NA east of Rwy 18 and northeast of Rwy 32.  
**A** NA For inop ALS, increase S-LOC 14 Cat A and B visibility to 1 SM. DME from VUH VOR/DME. Simultaneous reception of I-GLS and VUH DME required.

MALSR



**MISSED APPROACH:** Climb to 1200 then climbing right turn to 2400 on heading 360° and VUH VOR/DME R-315 to SWANE INT/VUH 5.6 DME and hold, continue climb-in-hold to 2400.

ASOS <b>123.95</b>	HOUSTON APP CON <b>134.45 284.0</b>	GALVESTON TOWER ★ <b>120.575 (CTAF) 0</b>	GND CON <b>118.625</b>	CLNC DEL <b>135.35</b> (When twr closed)	UNICOM <b>123.05</b>
-----------------------	--	--	---------------------------	--	-------------------------



CATEGORY	A	B	C	D
S-ILS 14	205- $\frac{1}{2}$ 200 (200- $\frac{1}{2}$ )			
S-LOC 14	460- $\frac{1}{2}$ 455 (500- $\frac{1}{2}$ )	460- $\frac{7}{8}$ 455 (500- $\frac{7}{8}$ )		
CIRCLING	500-1 494 (500-1)	520-1 514 (600-1)	620- $\frac{13}{4}$ 614 (700- $\frac{13}{4}$ )	620-2 614 (700-2)

REIL Rwy 18, 32, and 36  
MIRL Rwy 18-36  
HIRL Rwy 14-32

FAF to MAP 5.5 NM					
Knots	60	90	120	150	180
Min:Sec	5:30	3:40	2:45	2:12	1:50

ILS or LOC RWY 14  
SCHOLES INTL AT GALVESTON (GLS)

**MISSED APPROACH:** Climb to 1200 then climbing right turn to 2400 on heading 360° and VUH VOR/DME R-315 to SWANE INT/VUH 5.6 DME and hold, continue climb-in-hold to 2400.

SCHOLES INTL AT GALVESTON (GLS)  
ILS or LOC RWY 14