

FRESNO, CALIFORNIA

AL-162 (FAA)

25163

TACAN CZQ Chan 76 (112.9)	APP CRS 307°	Rwy Ldg TDZE Apt Elev	29R 9227 333 336	29L 8008 331 336
---	------------------------	-----------------------------	--	--

TACAN RWY 29R

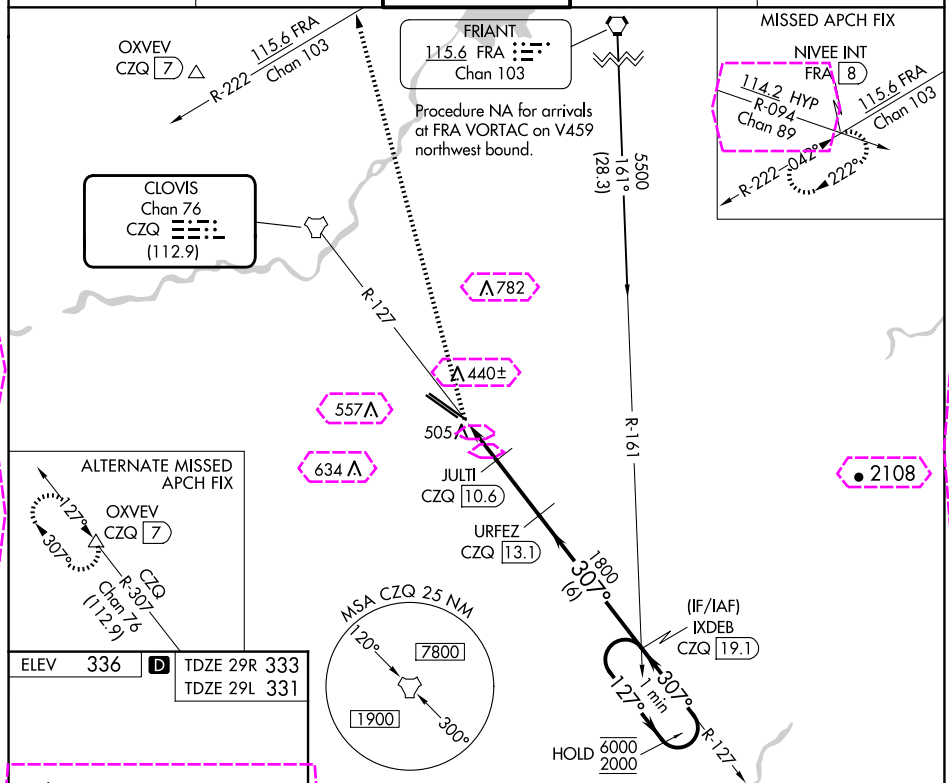
FRESNO YOSEMITE INTL (FAT)

▼ Rwy 29R helicopter visibility reduction below RVR 4000 NA.
▲ For inop ALS, increase S-29R Cat A/B visibility to RVR 5500 and Cat E visibility to 1 1/4 mile.

ALSF-2 Rwy 29R

MISSED APPROACH: Climb to 5500 on heading 330° and FRA VORTAC R-222 to NIVEE INT/FRA 8 DME and hold, continue climb-in-hold to 5500.

ATIS 121.35 273.6	FRESNO APP CON 119.6 351.95	FRESNO TOWER 118.2 251.1	GND CON 121.7 348.6	CLNC DEL 124.35 348.6
-----------------------------	---------------------------------------	------------------------------------	-------------------------------	---------------------------------



--

FRESNO, CALIFORNIA
Amdt 3 10OCT19

36°47'N-119°43'W

FRESNO YOSEMITE INTL (FAT)
TACAN RWY 29R

SW-2, 10 JUL 2025 to 07 AUG 2025

SW-2, 10 JUL 2025 to 07 AUG 2025

FRESNO, CALIFORNIA

AL-162 (FAA)

25219

TACAN CZQ	APP CRS	Rwy Ldg	29R	29L
Chan 76	307°	TDZE	9227	8008
(112.9)		Apt Elev	333	331
			336	336

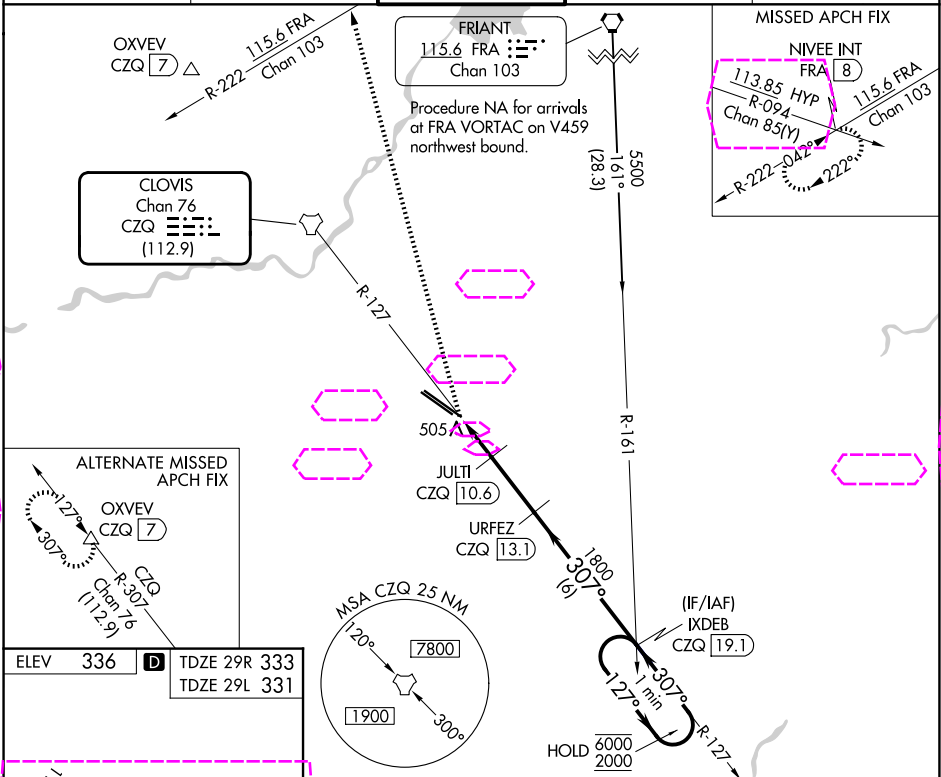
TACAN RWY 29R

FRESNO YOSEMITE INTL (FAT)

V Rwy 29R helicopter visibility reduction below RVR 4000 NA.
A For inop ALS, increase S-29R Cat A/B visibility to RVR 5500 and Cat E visibility to 1 1/4 mile.

MISSSED APPROACH: Climb to 5500 on heading 330° and FRA VORTAC R-222 to NIVEE INT/FRA 8 DME and hold, continue climb-in-hold to 5500.

ATIS 121.35 273.6	FRESNO APP CON 119.6 351.95	FRESNO TOWER 118.2 251.1	GND CON 121.7 348.6	CLNC DEL 124.35 348.6
-----------------------------	---------------------------------------	------------------------------------	-------------------------------	---------------------------------



ELEV 336	TDZE 29R 333	TDZE 29L 331
REIL Rwys 11L and 11R HIRL Rwy 11L-29R MIRL Rwy 11R-29L TDZ/CL Rwy 29R		
36°47'N-119°43'W		
FRESNO YOSEMITE INTL (FAT)		
TACAN RWY 29R		

SW-2, 07 AUG 2025 to 04 SEP 2025

SW-2, 07 AUG 2025 to 04 SEP 2025