



FRESNO, CALIFORNIA

TACAN CZQ Chan <b>76</b> <b>(112.9)</b>	APP CRS <b>131°</b>	Rwy Ldg TDZE Apt Elev	11L <b>9279</b> <b>336</b> <b>336</b>	11R <b>8008</b> <b>333</b> <b>336</b>
---	------------------------	-----------------------------	--	--

AL-162 (FAA)

25219

# TACAN RWY 11L

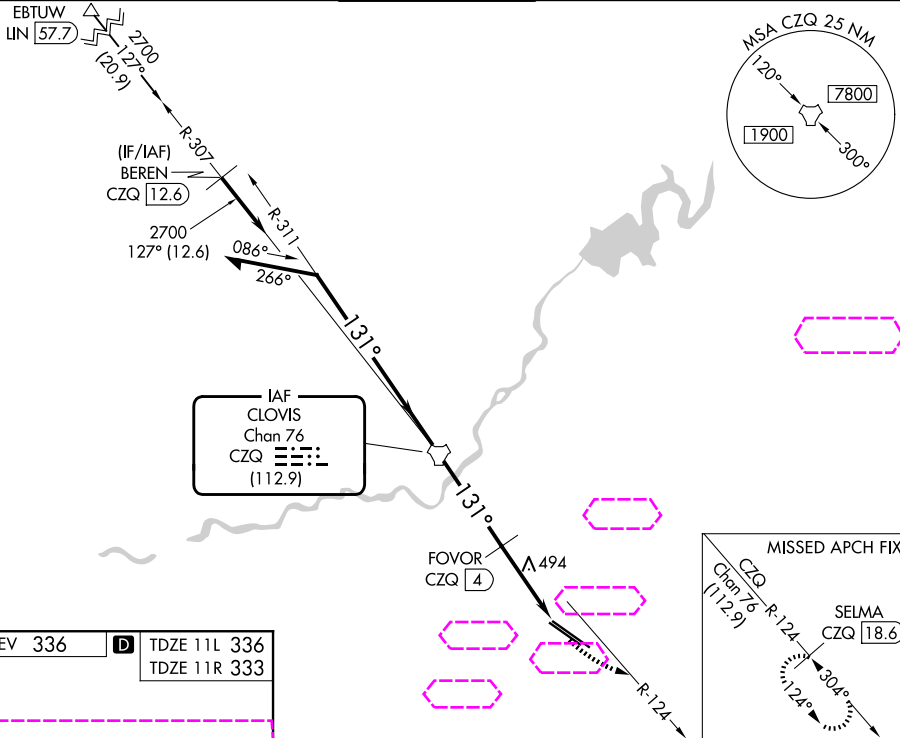
FRESNO YOSEMITE INTL (FAT)

DME required.

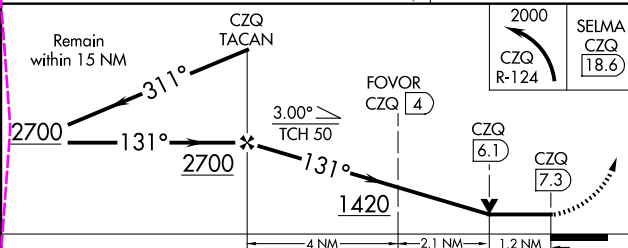
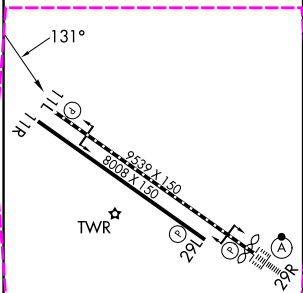
**▼** Rwy 11L helicopter visibility reduction below ¾ SM NA.  
**▲**

MISSED APPROACH: Climbing left turn to 2000 on CZQ  
TACAN R-124 to SELMA/CZQ 18.6 DME and hold.

ATIS <b>121.35 273.6</b>	FRESNO APP CON <b>119.6 351.95</b>	FRESNO TOWER <b>118.2 251.1</b>	GND CON <b>121.7 348.6</b>	CLNC DEL <b>124.35 348.6</b>
-----------------------------	---------------------------------------	------------------------------------	-------------------------------	---------------------------------



ELEV 336	<b>D</b> TDZE 11L 336 TDZE 11R 333
----------	---------------------------------------



REIL Rwy 11L and 11R  
HIRL Rwy 11L-29R  
MIRL Rwy 11R-29L  
TDZ/CL Rwy 29R

CATEGORY	A	B	C	D	E
S-11L	760/55	424 (500-1)	760-1¼	424 (500-1¼)	
SIDESTEP 11R	760-1	427 (500-1)	760-1½ 427 (500-1½)	760-2	427 (500-2)
<b>CIRCLING</b>	820-1	484 (500-1)	920-1½ 584 (600-1½)	920-2 584 (600-2)	1140-2¾ 804 (900-2¾)

FRESNO, CALIFORNIA  
Amdt 3 10OCT19

36°47'N-119°43'W

FRESNO YOSEMITE INTL (FAT)  
**TACAN RWY 11L**

SW-2, 07 AUG 2025 to 04 SEP 2025

SW-2, 07 AUG 2025 to 04 SEP 2025