

FRESNO, CALIFORNIA

AL-162 (FAA)

25163

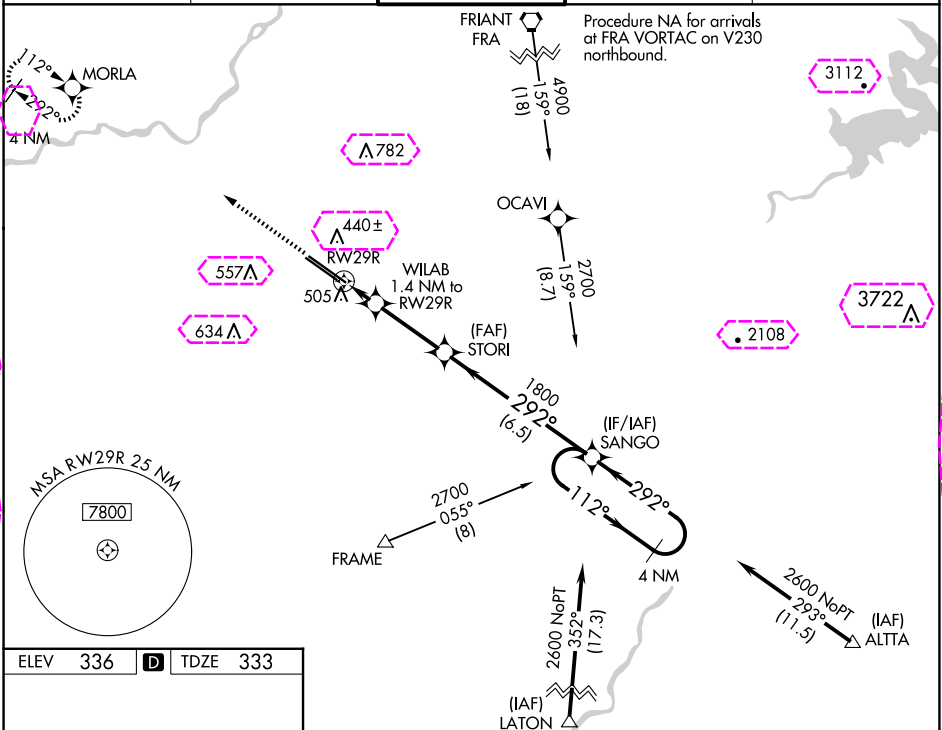
WAAS CH 81803 W29A	APP CRS 292°	Rwy Ldg TDZE 333 Apt Elev 336
--	------------------------	---

RNAV (GPS) RWY 29R

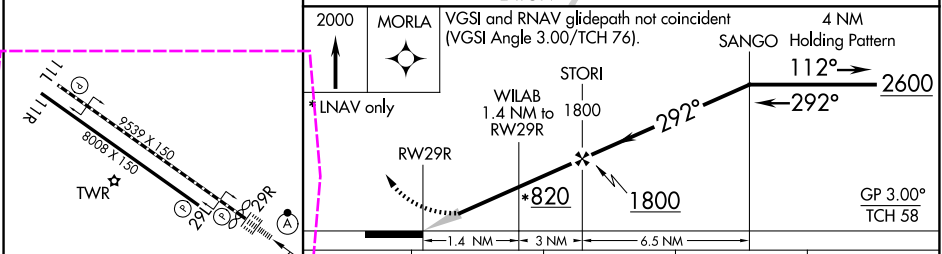
FRESNO YOSEMITE INTL (FAT)

For uncompensated Baro-VNAV systems, LNAV/VNAV NA below 0°C (32°F) or above 54°C (130°F). DME/DME RNP-0.3 NA.	ALSF-2	MISSED APPROACH: Climb to 2000 direct MORLA and hold.
---	--------	---

ATIS 121.35 273.6	FRESNO APP CON 119.6 351.95	FRESNO TOWER 118.2 251.1	GND CON 121.7 348.6	CLNC DEL 124.35 348.6
-----------------------------	---------------------------------------	------------------------------------	-------------------------------	---------------------------------



ELEV 336	D	TDZE 333
----------	---	----------



CATEGORY	A	B	C	D
LPV DA	533/18	200 (200-½)		
LNAV/VNAV DA	689/30	356 (400-¾)		
LNAV MDA	760/24	427 (500-½)	760/40	427 (500-¾)
CIRCLING	820-1	484 (500-1)	920-1½ 584 (600-1½)	920-2 584 (600-2)

FRESNO, CALIFORNIA
Amdt 1B 07DEC17

36°47'N-119°43'W

RNAV (GPS) RWY 29R

FRESNO, CALIFORNIA

AL-162 (FAA)

25219

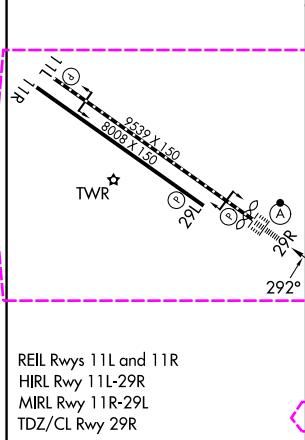
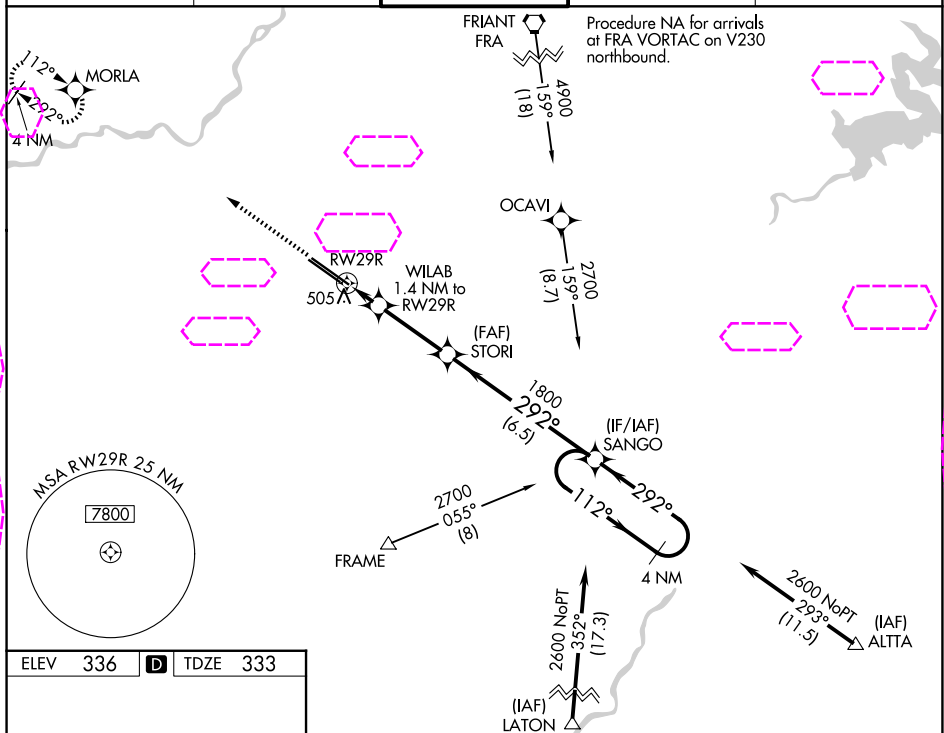
WAAS CH 81803 W29A	APP CRS 292°	Rwy Ldg 9227 TDZE 333 Apt Elev 336
--	------------------------	---

RNAV (GPS) RWY 29R

FRESNO YOSEMITE INTL (FAT)

For uncompensated Baro-VNAV systems, LNAV/VNAV NA below 0°C (32°F) or above 54°C (130°F). DME/DME RNP-0.3 NA.	ALSF-2 	MISSED APPROACH: Climb to 2000 direct MORLA and hold.
---	------------	---

ATIS 121.35 273.6	FRESNO APP CON 119.6 351.95	FRESNO TOWER 118.2 251.1	GND CON 121.7 348.6	CLNC DEL 124.35 348.6
-----------------------------	---------------------------------------	------------------------------------	-------------------------------	---------------------------------



2000 ↑ MORLA	VGSI and RNAV glidepath not coincident (VGSI Angle 3.00/TCH 76).			4 NM SANGO Holding Pattern
* LNAV only	WILAB 1.4 NM to RW29R		STORI 1800	112° → 2600 ← 292°
	RW29R	*820	1800	GP 3.00° TCH 58
	1.4 NM		3 NM	6.5 NM
CATEGORY	A	B	C	D
LPV DA	533/18		200 (200-½)	
LNAV/ VNAV DA	689/30		356 (400-⅔)	
LNAV MDA	760/24	427 (500-½)	760/40	427 (500-¾)
CIRCLING	820-1	484 (500-1)	920-1½ 584 (600-1½)	920-2 584 (600-2)

FRESNO, CALIFORNIA
Amdt 1B 07DEC17

36°47'N-119°43'W

RNAV (GPS) RWY 29R

SW-2, 07 AUG 2025 to 04 SEP 2025