

FRESNO, CALIFORNIA

AL-162 (FAA)

25163

WAAS CH 50530 W29B	APP CRS 292°	Rwy Ldg TDZE 331 Apt Elev 336
--	------------------------	---

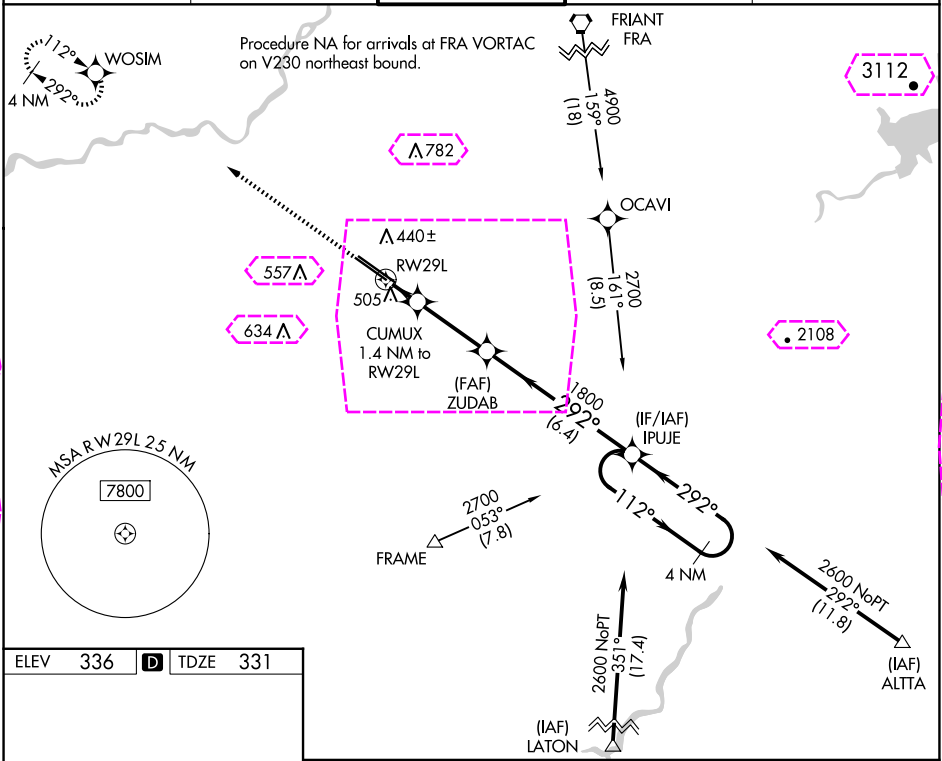
RNAV (GPS) RWY 29L

FRESNO YOSEMITE INTL (FAT)

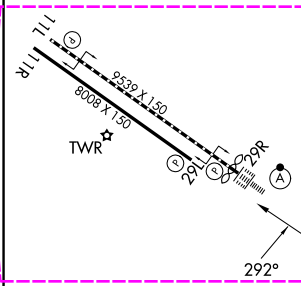
For uncompensated Baro-VNAV systems, LNAV/VNAV NA below 0°C (32°F) or above 54°C (130°F). DME/DME RNP-0.3 NA. Helicopter visibility reduction below ¾ SM NA.

MISSED APPROACH: Climb to 2000 direct WOSIM and hold.

ATIS 121.35 273.6	FRESNO APP CON 119.6 351.95	FRESNO TOWER 118.2 251.1	GND CON 121.7 348.6	CLNC DEL 124.35 348.6
-----------------------------	---------------------------------------	------------------------------------	-------------------------------	---------------------------------



ELEV 336	TDZE 331
----------	----------



REIL Rwy 11L and 11R
HIRL Rwy 11L-29R
MIRL Rwy 11R-29L
TDZ/CL Rwy 29R

2000 ↑	WOSIM ✦	4 NM Holding Pattern			
* LNAV only.		CUMUX 1.4 NM to RW29L	ZUDAB 1800	IPUJE	112° → ← 292° 2600
RW29L		* 820	1800		GP 3.00° TCH 52
1.4 NM		3.1 NM	6.4 NM		
CATEGORY	A	B	C	D	
LPV DA	581-¾		250 (300-¾)		
LNAV/VNAV DA	667-1½		336 (400-1½)		
LNAV MDA	760-1	429 (500-1)	760-1¼	429 (500-1¼)	
CIRCLING	820-1	484 (500-1)	920-1½ 584 (600-1½)	920-2 584 (600-2)	

FRESNO, CALIFORNIA
Amdt 2B 07DEC17

36°47'N-119°43'W

FRESNO YOSEMITE INTL (FAT)

RNAV (GPS) RWY 29L

FRESNO, CALIFORNIA

AL-162 (FAA)

25219

WAAS CH 50530 W29B	APP CRS 292°	Rwy Ldg TDZE Apt Elev	8008 331 336
--	------------------------	-----------------------------	---

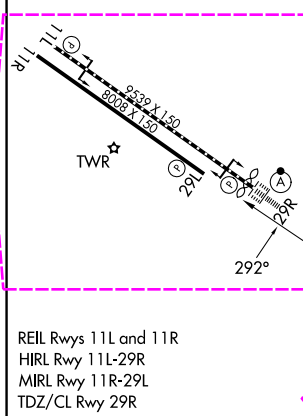
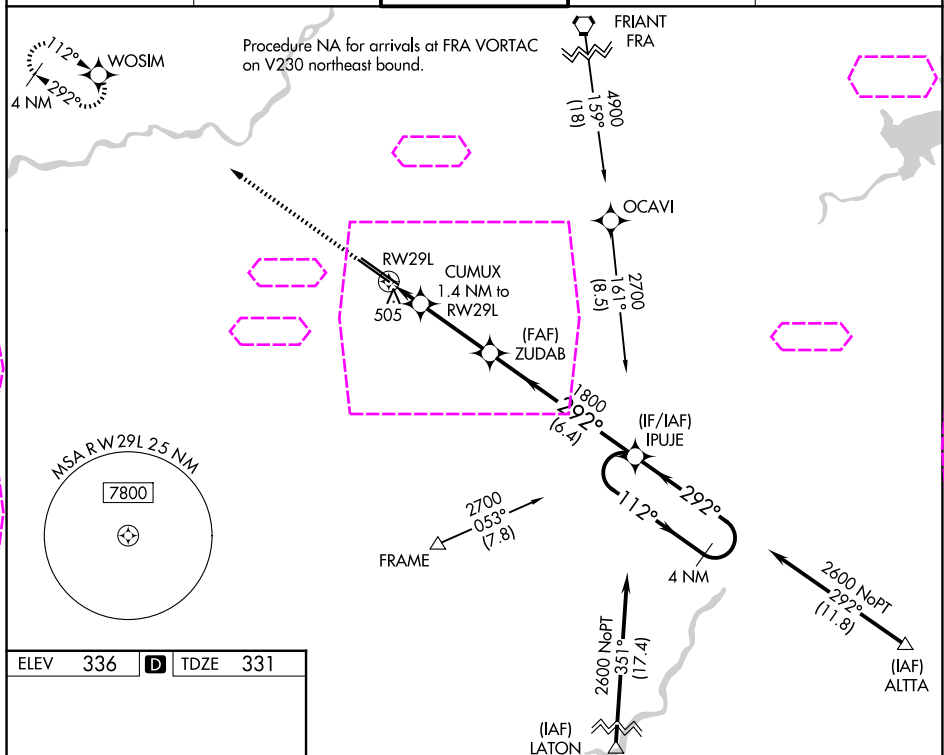
RNAV (GPS) RWY 29L

FRESNO YOSEMITE INTL (FAT)

For uncompensated Baro-VNAV systems, LNAV/VNAV NA below 0°C (32°F) or above 54°C (130°F). DME/DME RNP-0.3 NA. Helicopter visibility reduction below ¾ SM NA.

MISSED APPROACH: Climb to 2000 direct WOSIM and hold.

ATIS 121.35 273.6	FRESNO APP CON 119.6 351.95	FRESNO TOWER 118.2 251.1	GND CON 121.7 348.6	CLNC DEL 124.35 348.6
-----------------------------	---------------------------------------	------------------------------------	-------------------------------	---------------------------------



2000	WOSIM	4 NM Holding Pattern			
* LNAV only.		CUMUX 1.4 NM to RW29L	ZUDAB 1800	IPUJE 112° 292° 2600	
RW29L		* 820	1800	GP 3.00° TCH 52	
		1.4 NM	3.1 NM	6.4 NM	
CATEGORY		A	B	C	D
LPV DA		581-¾ 250 (300-¾)			
LNAV/VNAV DA		667-1½ 336 (400-1½)			
LNAV MDA		760-1	429 (500-1)	760-1¼	429 (500-1¼)
CIRCLING		820-1	484 (500-1)	920-1½ 584 (600-1½)	920-2 584 (600-2)

FRESNO, CALIFORNIA
Amdt 2B 07DEC17

36°47'N-119°43'W

FRESNO YOSEMITE INTL (FAT) RNAV (GPS) RWY 29L

SW-2, 07 AUG 2025 to 04 SEP 2025

SW-2, 07 AUG 2025 to 04 SEP 2025