

FRESNO, CALIFORNIA

AL-162 (FAA)

25163

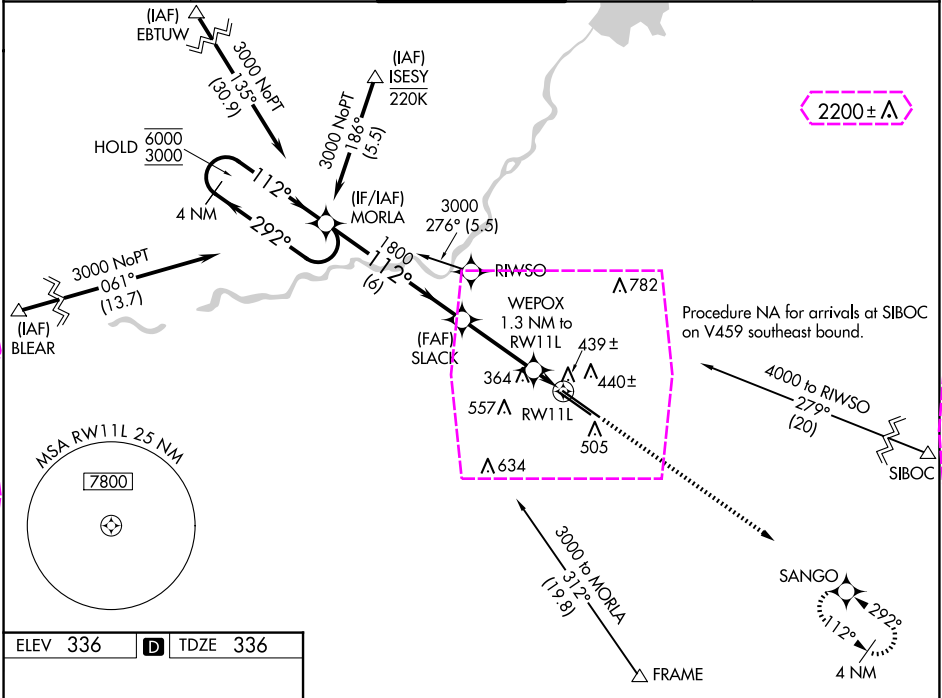
WAAS CH 77505 W11A	APP CRS 112°	Rwy Ldg TDZE Apt Elev	9279 336 336
--	------------------------	-----------------------------	---

RNAV (GPS) RWY 11L

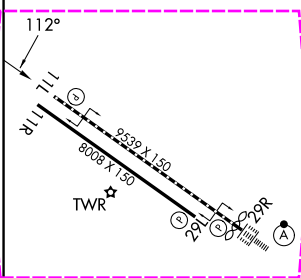
FRESNO YOSEMITE INTL (FAT)

RNP APCH.	MISSED APPROACH: Climb to 2600 direct SANGO and hold.
For uncompensated Baro-VNAV systems, LNAV/VNAV NA below -1°C or above 54°C.	

ATIS 121.35 273.6	FRESNO APP CON 119.6 351.95	FRESNO TOWER 118.2 251.1	GND CON 121.7 348.6	CLNC DEL 124.35 348.6
-----------------------------	---------------------------------------	------------------------------------	-------------------------------	---------------------------------



ELEV 336	D	TDZE 336
----------	---	----------



REIL Rws 11L and 11R
HIRL Rwy 11L-29R
MIRL Rwy 11R-29L
TDZ/CL Rwy 29R

4 NM Holding Pattern		MORLA	SLACK	2600	SANGO
6000 ← 292°		112° →	1800	WEPOX 1.3 NM to RW11L	*LNAV only
GP 3.00°		1800	1800	800	RW11L
TCH 50		6 NM	3.1 NM	1.3 NM	
CATEGORY	A	B	C	D	
LPV DA	536/40 200 (200-¾)				
LNAV/VNAV DA	620/45 284 (300-¾)				
LNAV MDA	700/55 364 (400-1)				
CIRCLING	820-1	484 (500-1)	920-1½ 584 (600-1½)	920-2 584 (600-2)	

FRESNO, CALIFORNIA
Amdt 2 10OCT19

36°47'N-119°43'W

RNAV (GPS) RWY 11L

FRESNO, CALIFORNIA

AL-162 (FAA)

25219

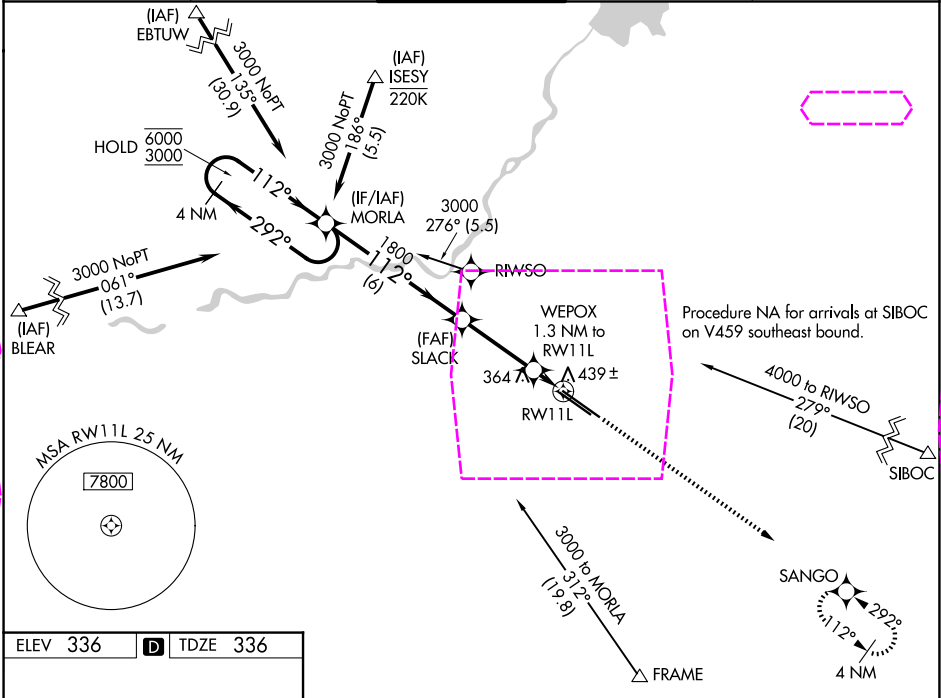
WAAS CH 77505 W11A	APP CRS 112°	Rwy Ldg 9279 TDZE 336 Apt Elev 336
--	------------------------	---

RNAV (GPS) RWY 11L

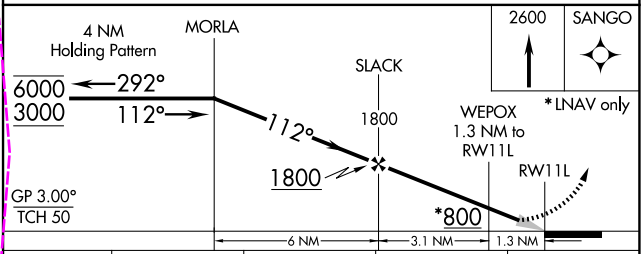
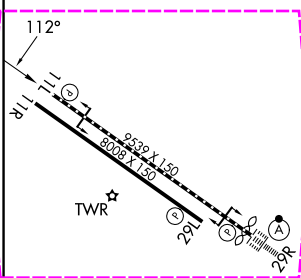
FRESNO YOSEMITE INTL (FAT)

RNP APCH. For uncompensated Baro-VNAV systems, LNAV/VNAV NA below -1°C or above 54°C.	MISSED APPROACH: Climb to 2600 direct SANGO and hold.
--	---

ATIS 121.35 273.6	FRESNO APP CON 119.6 351.95	FRESNO TOWER 118.2 251.1	GND CON 121.7 348.6	CLNC DEL 124.35 348.6
-----------------------------	---------------------------------------	------------------------------------	-------------------------------	---------------------------------



ELEV 336	D	TDZE 336
----------	---	----------



CATEGORY	A	B	C	D
LPV DA	536/40	200 (200-¾)		
LNAV/VNAV DA	620/45	284 (300-¾)		
LNAV MDA	700/55	364 (400-1)		
CIRCLING	820-1	484 (500-1)	920-1½ 584 (600-1½)	920-2 584 (600-2)

REIL Rws 11L and 11R
HIRL Rwy 11L-29R
MIRL Rwy 11R-29L
TDZ/CL Rwy 29R

FRESNO, CALIFORNIA
Amdt 2 10OCT19

36°47'N-119°43'W

RNAV (GPS) RWY 11L