
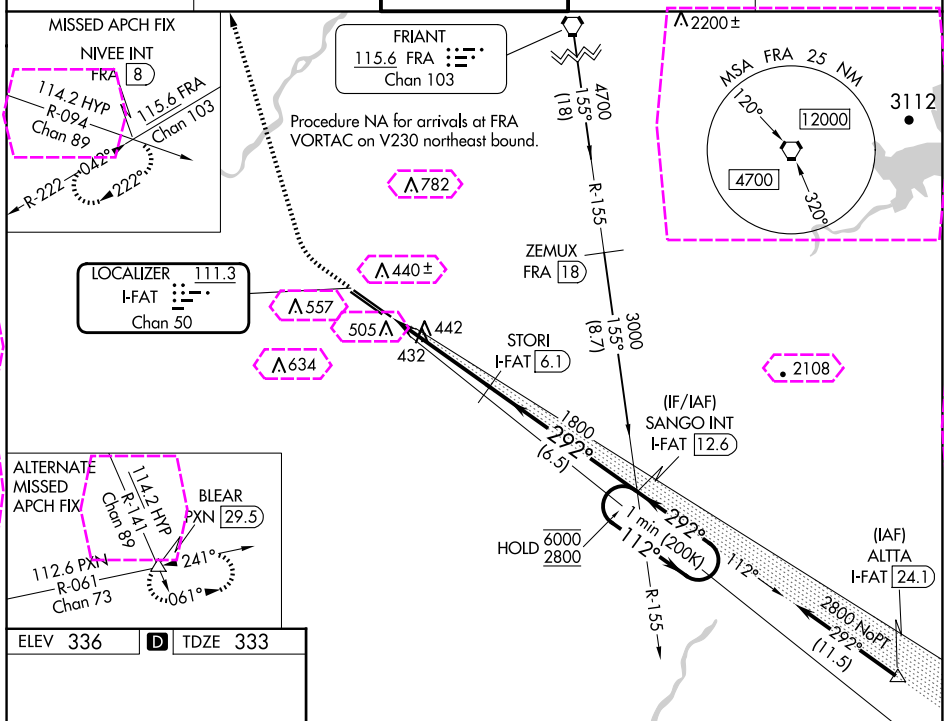


ILS Y RWY 29R (SA CAT I)  
FRESNO YOSEMITE INTL (FAT)

<p>Requires specific OPSPEC, MSPEC, or LOA approval and use of HUD to DH.</p>	<p>ALSF-2</p> 	<p>MISSED APPROACH: Climb to 800 then climbing right turn to 5500 on heading 330° and FRA VORTAC R-222 to NIVEE INT/FRA 8 DME and hold, continue climb-in-hold to 5500.</p>
---	---	---

ATIS 121.35 273.6	FRESNO APP CON 119.6 351.95	FRESNO TOWER 118.2 251.1	GND CON 121.7 348.6	CLNC DEL 124.35 348.6
----------------------	--------------------------------	-----------------------------	------------------------	--------------------------



800' 5500' FRA R-222 NIVEE INT VGSi and ILS glidepath not coincident (VGSi Angle 3.00°/TCH 76).

STORI I-FAT 6.1 SANGO INT I-FAT 12.6 One Minute Holding Pattern

11L 11R 2530' X 150' 29° 1800' 112° 6000' 2800' 292° 1800' GS 3.00° TCH 55

CATEGORY	A	B	C	D
S-ILS 29R	RA 151/14 150 DA 483			

REIL Rwy 11L and 11R  
HIRL Rwy 11L-29R  
MIRL Rwy 11R-29L  
TDZ/CL Rwy 29R

SA CATEGORY I ILS - SPECIAL AIRCREW  
& AIRCRAFT CERTIFICATION REQUIRED

FRESNO, CALIFORNIA

AL-162 (FAA)

25219

LOC/DME I-FAT	APP CRS	Rwy Ldg	9227
111.3	292°	TDZE	333
Chan 50		Apt Elev	336

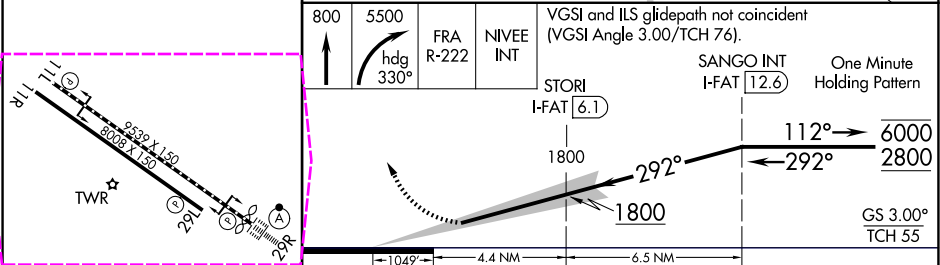
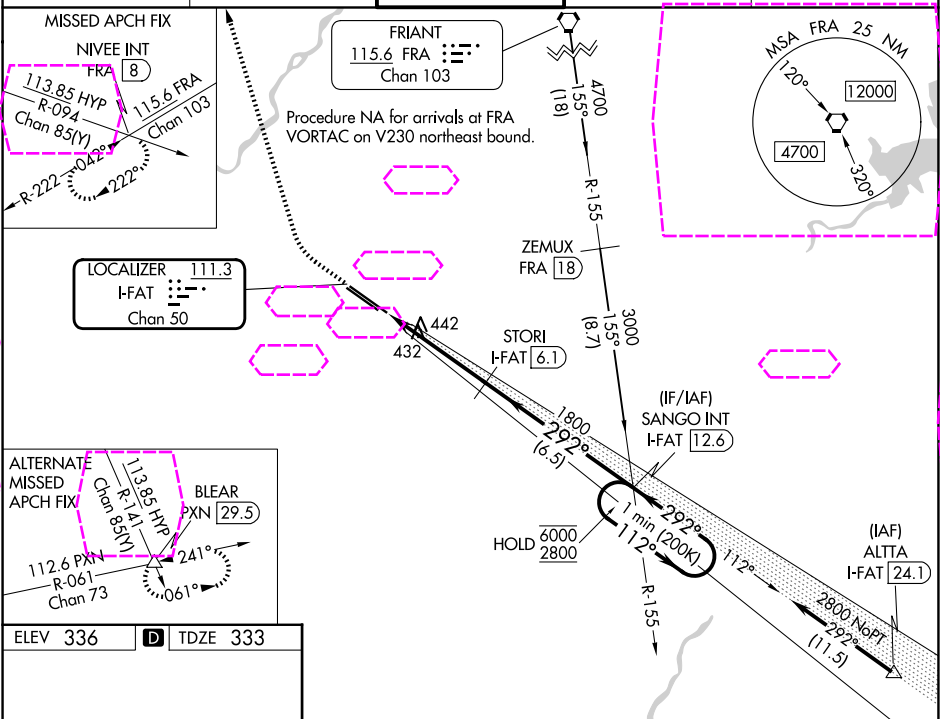
ILS Y RWY 29R (SA CAT I)  
FRESNO YOSEMITE INTL (F'AT)

Requires specific OPSPEC, MSPEC, or LOA approval and use of HUD to DH.

ALSF-2

MISSED APPROACH: Climb to 800 then climbing right turn to 5500 on heading 330° and FRA VORTAC R-222 to NIVEE INT/FRA 8 DME and hold, continue climb-in-hold to 5500.

ATIS 121.35 273.6	FRESNO APP CON 119.6 351.95	FRESNO TOWER 118.2 251.1	GND CON 121.7 348.6	CLNC DEL 124.35 348.6
----------------------	--------------------------------	-----------------------------	------------------------	--------------------------



CATEGORY	A	B	C	D
S-ILS 29R	RA 151/14 150 DA 483			

REIL Rwy 11L and 11R  
HIRL Rwy 11L-29R  
MIRL Rwy 11R-29L  
TDZ/CL Rwy 29R

SA CATEGORY I ILS - SPECIAL AIRCREW & AIRCRAFT CERTIFICATION REQUIRED

FRESNO, CALIFORNIA  
Amdt 39A 24MAR22

36°47'N-119°43'W

FRESNO YOSEMITE INTL (F'AT)  
ILS Y RWY 29R (SA CAT I)