

FRESNO, CALIFORNIA

AL-162 (FAA)

25163

LOC/DME I-FAT 111.3 Chan 50	APP CRS 292°	Rwy Ldg TDZE 333 Apt Elev 336
---	------------------------	---

ILS Y RWY 29R (CAT II & III)

FRESNO YOSEMITE INTL (FAT)

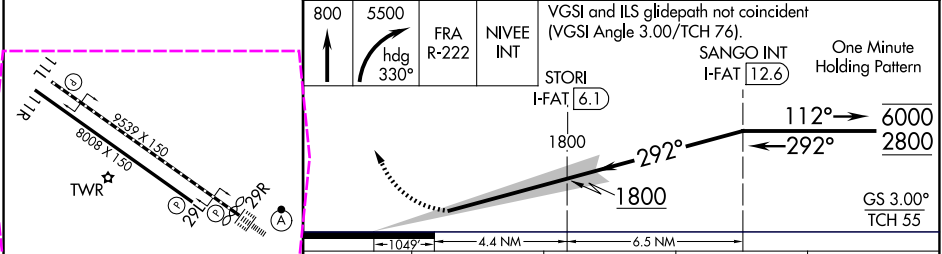
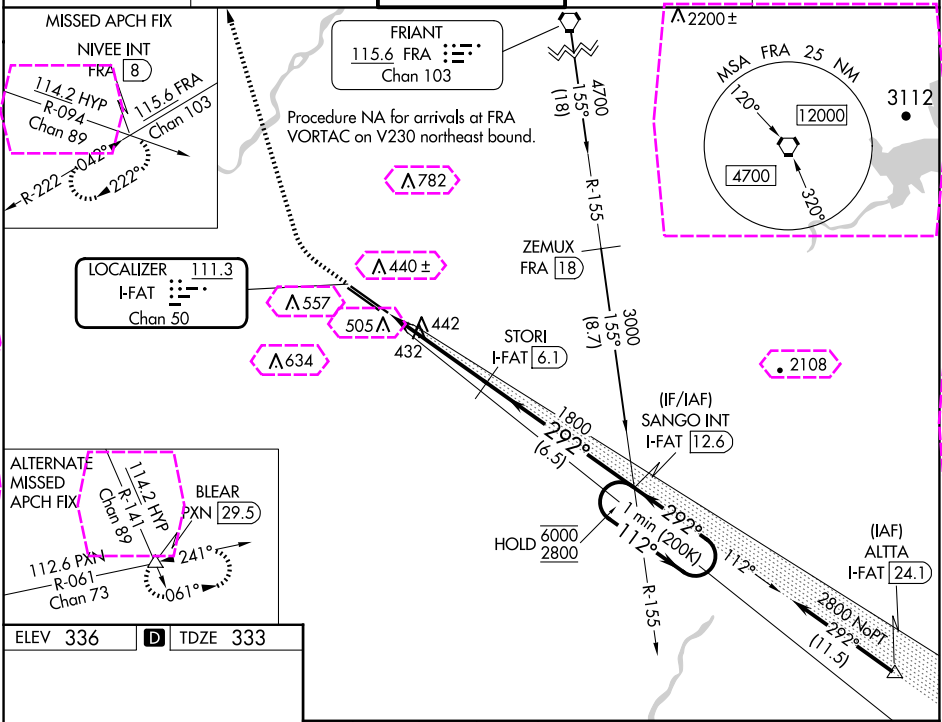
⚠ CAT II: RVR 1000 authorized with specific OPSPEC, MSPEC, or LOA approval and use of autoland or HUD to touchdown.

ALSF-2

(A)

MISSED APPROACH: Climb to 800 then climbing right turn to 5500 on heading 330° and FRA VORTAC R-222 to NIVEE INT/FRA 8 DME and hold, continue climb-in-hold to 5500.

ATIS 121.35 273.6	FRESNO APP CON 119.6 351.95	FRESNO TOWER 118.2 251.1	GND CON 121.7 348.6	CLNC DEL 124.35 348.6
-----------------------------	---------------------------------------	------------------------------------	-------------------------------	---------------------------------



REIL Rwy 11L and 11R HIRL Rwy 11L-29R MIRL Rwy 11R-29L TDZ/CL Rwy 29R	CATEGORY	A	B	C	D
	S-ILS 29R	CAT II RA 101/12 100 DA 433			
	S-ILS 29R	CAT III RVR 06			
	CATEGORY II & III ILS - SPECIAL AIRCREW & AIRCRAFT CERTIFICATION REQUIRED				

FRESNO, CALIFORNIA
Amdt 39A 24MAR22

36°47'N-119°43'W

FRESNO YOSEMITE INTL (FAT)
ILS Y RWY 29R (CAT II & III)

FRESNO, CALIFORNIA

AL-162 (FAA)

25219

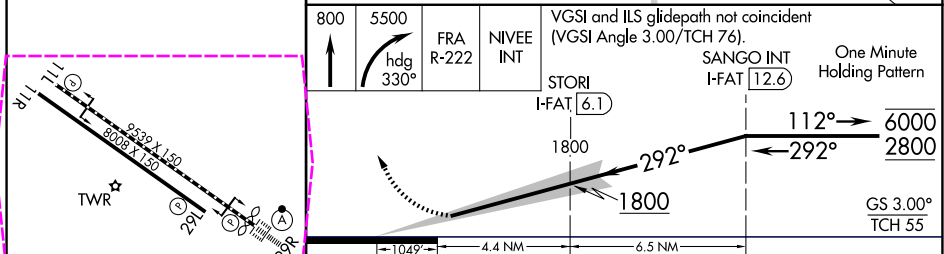
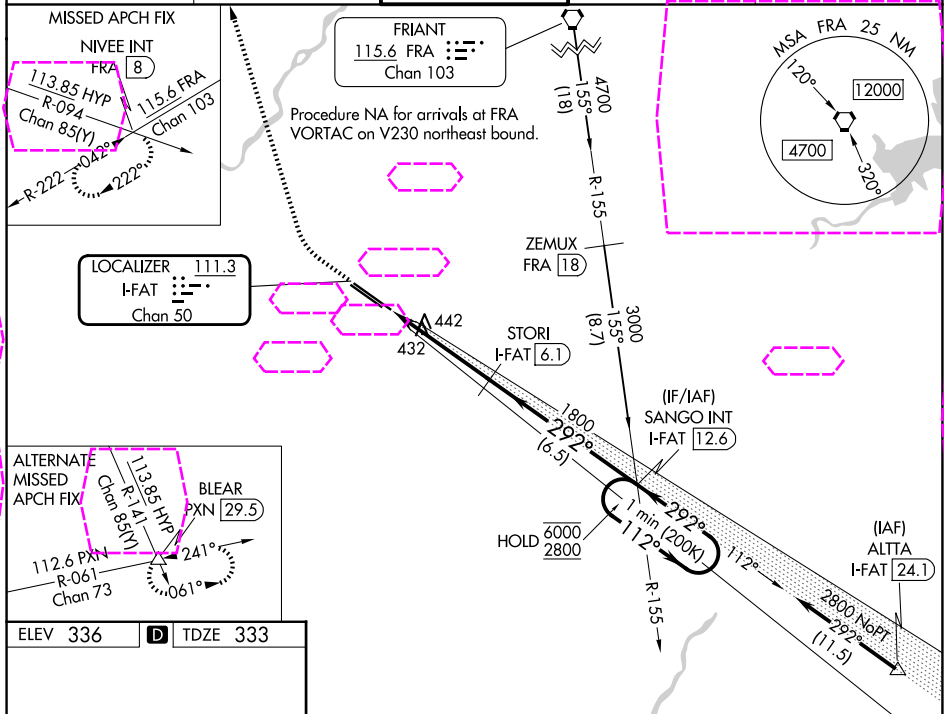
LOC/DME I-FAT 111.3 Chan 50	APP CRS 292°	Rwy Ldg TDZE 333 Apt Elev 336
---	------------------------	---

ILS Y RWY 29R (CAT II & III)

FRESNO YOSEMITE INTL (FAT)

⚠ CAT II: RVR 1000 authorized with specific OPSPEC, MSPEC, or LOA approval and use of autoland or HUD to touchdown.	ALSF-2 	MISSED APPROACH: Climb to 800 then climbing right turn to 5500 on heading 330° and FRA VORTAC R-222 to NIVEE INT/FRA 8 DME and hold, continue climb-in-hold to 5500.
--	------------	--

ATIS 121.35 273.6	FRESNO APP CON 119.6 351.95	FRESNO TOWER 118.2 251.1	GND CON 121.7 348.6	CLNC DEL 124.35 348.6
-----------------------------	---------------------------------------	------------------------------------	-------------------------------	---------------------------------



REIL Rwy 11L and 11R HIRL Rwy 11L-29R MIRL Rwy 11R-29L TDZ/CL Rwy 29R	CATEGORY	A	B	C	D
	S-ILS 29R	CAT II RA 101/12 100 DA 433			
	S-ILS 29R	CAT III RVR 06			
	CATEGORY II & III ILS - SPECIAL AIRCREW & AIRCRAFT CERTIFICATION REQUIRED				

FRESNO, CALIFORNIA
Amdt 39A 24MAR22

36°47'N-119°43'W

FRESNO YOSEMITE INTL (FAT)
ILS Y RWY 29R (CAT II & III)

SW-2, 07 AUG 2025 to 04 SEP 2025

SW-2, 07 AUG 2025 to 04 SEP 2025