

FRESNO CHANDLER EXEC (FCH)
RNAV (GPS) RWY 30

FRESNO, CALIFORNIA

AL-161 (FAA)

25219

APP CRS	Rwy Ldg	3089
291°	TDZE	280
	Apt Elev	280

RNAV (GPS) RWY 30

FRESNO CHANDLER EXEC (F'CH)

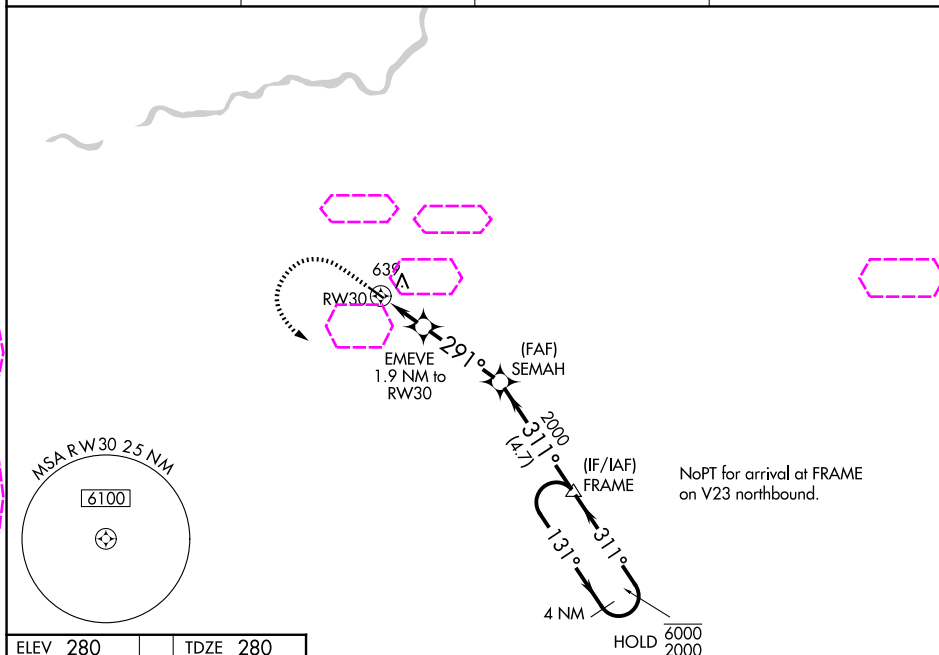
RNP APCH.



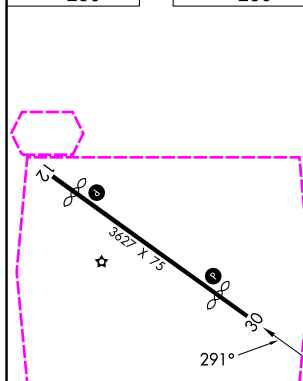
Straight-in Rwy 30 NA at night, Circling Rwy 30 NA at night.
Rwy 30 helicopter visibility reduction below 1 SM NA.

MISSED APPROACH: Climb to 1000 then climbing left turn to 2000 direct FRAME and hold.

AWOS-3 135.225	FRESNO APP CON 119.0 323.25	CLNC DEL 119.0	UNICOM 123.0 (CTAF) 0
-------------------	--------------------------------	-------------------	--------------------------



ELEV 280	TDZE 280
----------	----------



MIRL Rwy 12-30 0
REIL Rwy 12 and 30 0

	1000	2000	FRAME	SEMAH	FRAME	4 NM Holding Pattern
		EMEVE 1.9 NM to RW30	3.00° TCH 40	2000	311°	131° → 6000 ← 311° 2000
		RW30	291°	920		
		1.9	3.4 NM	4.7 NM		
CATEGORY	A	B	C	D		
LNAV MDA	800-1	520 (600-1)	800-1 3/8 520 (600-1 3/8)	NA		
CIRCLING	960-1	680 (700-1)	960-2 680 (700-2)	NA		

FRESNO, CALIFORNIA

Amdt 1 10OCT19

36°44'N-119°49'W

FRESNO CHANDLER EXEC (F'CH)

RNAV (GPS) RWY 30

SW-2, 07 AUG 2025 to 04 SEP 2025

SW-2, 07 AUG 2025 to 04 SEP 2025