

FRESNO, CALIFORNIA

AL-161 (FAA)

22083

WAAS CH 49242 W12A	APP CRS 111°	Rwy Idg TDZE Apt Elev	3212 280 280
--	------------------------	-----------------------------	---

RNAV (GPS) RWY 12

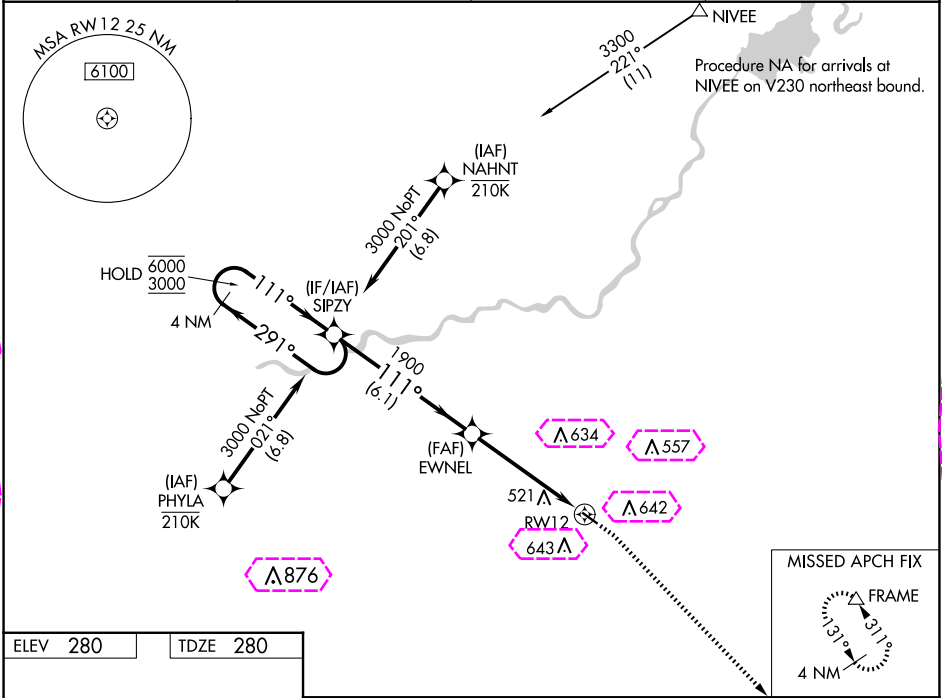
FRESNO CHANDLER EXEC (FCH)

RNP APCH-GPS.

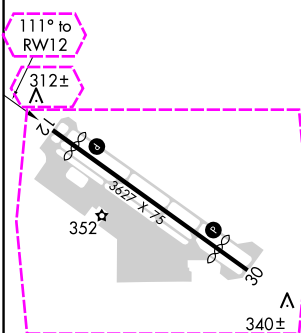
⚠ Circling Rwy 30 NA at night. Rwy 12 helicopter visibility reduction below $\frac{3}{4}$ SM NA.
⚠ For uncompensated Baro-VNAV systems, LNAV/VNAV NA below -1° C or above 54°C.

MISSED APPROACH: Climb to 800 then climbing right turn to 2000 direct FRAME and hold.

AWOS-3 135.225	FRESNO APP CON 119.0 323.25	CLNC DEL 119.0	UNICOM 123.0 (CTAF) 0
--------------------------	---------------------------------------	--------------------------	---------------------------------



ELEV 280	TDZE 280
----------	----------



4 NM Holding Pattern		SIPZY		EWNEL		FRAME	
6000 ← 291°		111° →		111°		1900	
3000				1900		1.4 NM to RW12	
GP 3.00°				6.1 NM		3.5 NM	
TCH 40						1.4 NM	
CATEGORY	A	B	C	D			
LPV DA	530-1 250 (300-1)				NA		
LNAV/VNAV DA	809-1½ 529 (600-1½)				NA		
LNAV MDA	780-1 500 (500-1)		780-1⅜ 500 (500-1⅜)		NA		
CIRCLING	960-1 680 (700-1)		960-2 680 (700-2)		NA		

FRESNO, CALIFORNIA
Amdt 1A 24MAR22

36°44'N-119°49'W

RNAV (GPS) RWY 12

FRESNO, CALIFORNIA

AL-161 (FAA)

25219

WAAS CH 49242 W12A	APP CRS 111°	Rwy Ldg TDZE Apt Elev	3212 280 280
--	------------------------	-----------------------------	---

RNAV (GPS) RWY 12

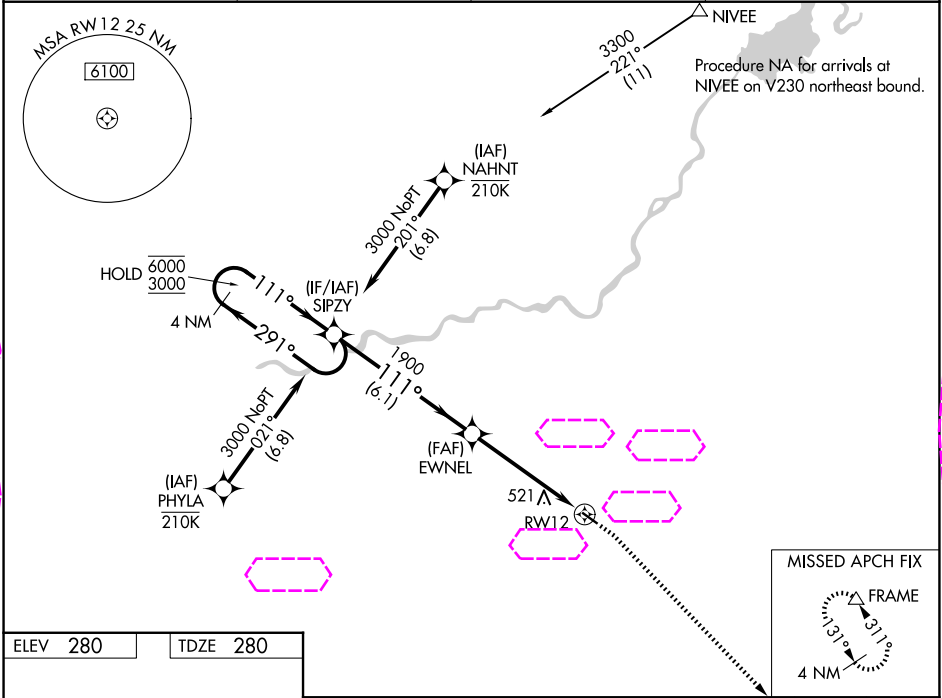
FRESNO CHANDLER EXEC (FCH)

RNP APCH-GPS.

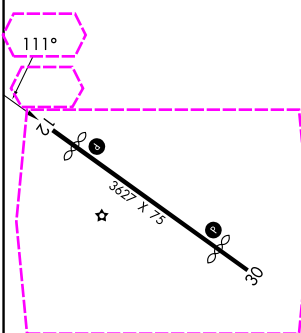
⚠ Circling Rwy 30 NA at night. Rwy 12 helicopter visibility reduction below $\frac{3}{4}$ SM NA.
⚠ For uncompensated Baro-VNAV systems, LNAV/VNAV NA below -1° C or above 54°C.

MISSED APPROACH: Climb to 800 then climbing right turn to 2000 direct FRAME and hold.

AWOS-3 135.225	FRESNO APP CON 119.0 323.25	CLNC DEL 119.0	UNICOM 123.0 (CTAF) 0
--------------------------	---------------------------------------	--------------------------	---------------------------------



ELEV 280	TDZE 280
----------	----------



SIPZY		EWNEL		FRAME	
4 NM Holding Pattern		1900		800 2000	
6000 ← 291°		111° →		1.4 NM to RWY 12	
GP 3.00°		1900		RWY 12	
TCH 40		6.1 NM		3.5 NM	
CATEGORY	A	B	C	D	
LPV DA	530-1 250 (300-1)				NA
LNAV/VNAV DA	809-1½ 529 (600-1½)				NA
LNAV MDA	780-1 500 (500-1)		780-1⅜ 500 (500-1⅜)		NA
CIRCLING	960-1 680 (700-1)		960-2 680 (700-2)		NA

FRESNO, CALIFORNIA
Amdt 1A 24MAR22

36°44'N-119°49'W

RNAV (GPS) RWY 12

SW-2, 07 AUG 2025 to 04 SEP 2025

SW-2, 07 AUG 2025 to 04 SEP 2025