

(JPOOL7, TTT) 24305

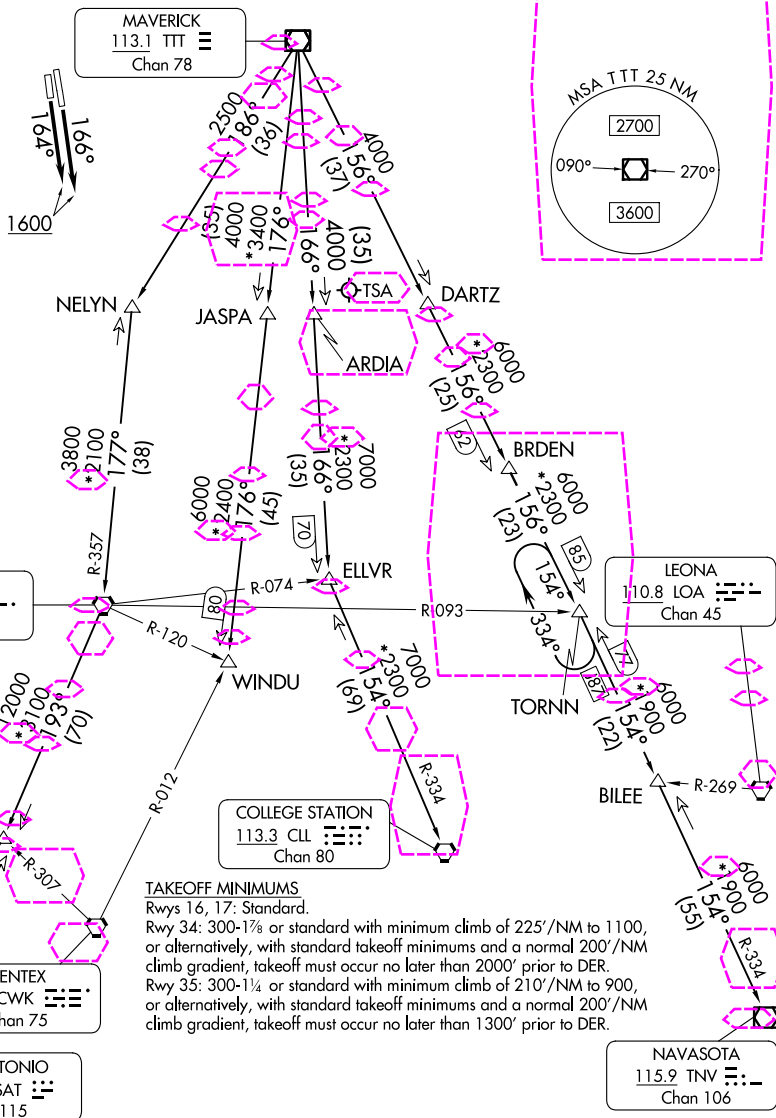
AL-159 (FAA)

FORT WORTH MEACHAM INTL (FTW)
FORT WORTH, TEXAS

JOE POOL SEVEN DEPARTURE

LONE STAR DEP CON
135.975 379.9
ATIS
120.7
CLNC DEL
124.65
GND CON
121.9
MEACHAM TOWER
118.3 257.8

RADAR and DME required.

TOP ALTITUDE:
ASSIGNED BY ATC

(CONTINUED ON FOLLOWING PAGE)

JOE POOL SEVEN DEPARTURE

(JPOOL7, TTT) 25JAN24

FORT WORTH, TEXAS
FORT WORTH MEACHAM INTL (FTW)

(JPOOL8, TTT) 25219

AL-159 (FAA)

FORT WORTH MEACHAM INTL (FTW)
FORT WORTH, TEXAS

JOE POOL EIGHT DEPARTURE

LONE STAR DEP CON
135.975 379.9
ATIS
120.7
CLNC DEL
124.65
GND CON
121.9
MEACHAM TOWER
118.3 257.8

RADAR and DME required.

**TOP ALTITUDE:
ASSIGNED BY ATC**

MSA TTT 25 NM

2700

090° 270°

3600

MAVERICK
113.1 TTT
Chan 78

1600
164°
166°

NELYN

JASPA

DARTZ

ARDIA

TSA

BRDEN

ELLVR

TORNN

BILLE

LEONA

WACO

WINDU

COLLEGE STATION

CENTEX

SAN ANTONIO

NAVASOTA

R-357

R-120

R-074

R-093

R-334

R-269

R-024

R-307

R-012

R-334

R-334

R-334

R-334

R-334

R-334

R-334

R-334

R-334

R-334

R-334

R-334

R-334

R-334

R-334

R-334

R-334

R-334

TAKEOFF MINIMUMS

Rwys 16, 17: Standard.

Rwy 34: 300-1½ or standard with minimum climb of 225'/NM to 1100, or alternatively, with standard takeoff minimums and a normal 200'/NM climb gradient, takeoff must occur no later than 2000' prior to DER.
Rwy 35: 300-1½ or standard with minimum climb of 210'/NM to 900, or alternatively, with standard takeoff minimums and a normal 200'/NM climb gradient, takeoff must occur no later than 1300' prior to DER.

(CONTINUED ON FOLLOWING PAGE)

NOTE: Chart not to scale.

JOE POOL EIGHT DEPARTURE

(JPOOL8, TTT) 07AUG25

FORT WORTH, TEXAS
FORT WORTH MEACHAM INTL (FTW)

SC-2, 07 AUG 2025 to 04 SEP 2025

SC-2, 07 AUG 2025 to 04 SEP 2025