

FORT WAYNE, INDIANA

AL-157 (FAA)

23222

VOR OLK 110.4	APP CRS 114°	Rwy Idg 2623 TDZE 836 Apt Elev 836
-------------------------	------------------------	---

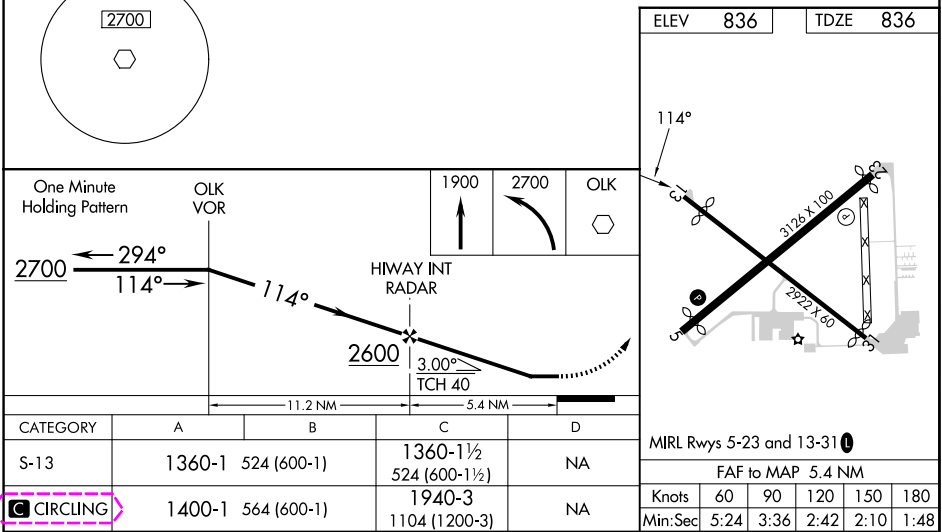
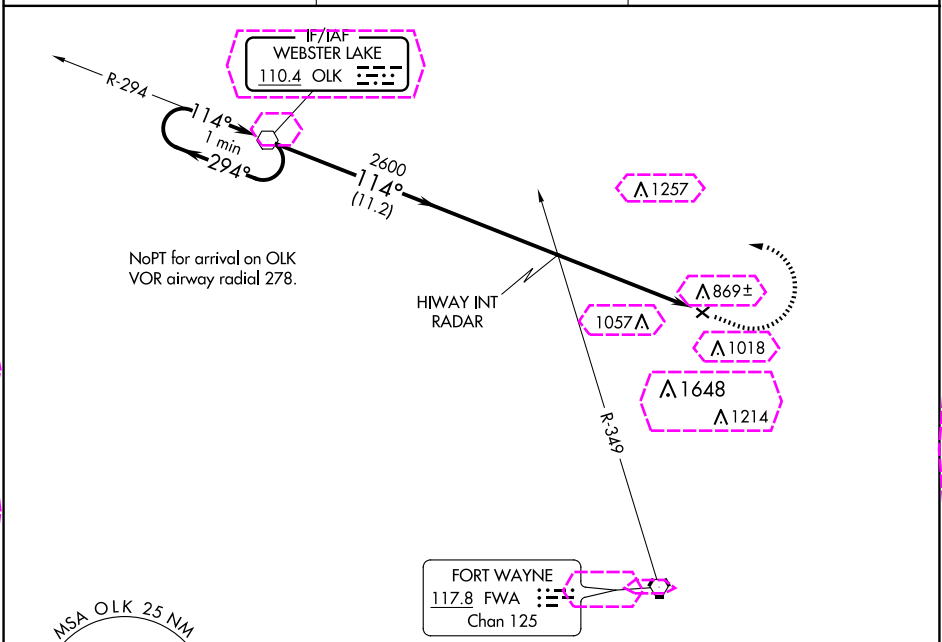
VOR RWY 13
SMITH FLD (SMD)

⚠ NA
-22°C

Rwy 13 helicopter visibility reduction below 1 SM NA. Procedure NA at night. When local altimeter setting not received, use Fort Wayne Intl altimeter setting and increase all MDA 40 feet and S-13 Cat C visibility 1/8 SM.

MISSED APPROACH: Climb to 1900 then climbing left turn to 2700 direct OLK VOR and hold.

AWOS-3 124.55	FORT WAYNE APP CON 127.2 284.6	UNICOM 122.8 (CTAF) 0
-------------------------	--	---------------------------------



FORT WAYNE, INDIANA
Amdt 11 25MAY17

41°09'N-85°09'W

SMITH FLD (SMD)
VOR RWY 13

EC-2, 10 JUL 2025 to 07 AUG 2025

EC-2, 10 JUL 2025 to 07 AUG 2025

FORT WAYNE, INDIANA

AL-157 (FAA)

25219

VOR OLK 110.4	APP CRS 114°	Rwy Ldg TDZE Apt Elev	2623 836 836
-------------------------	------------------------	-----------------------------	---

VOR RWY 13

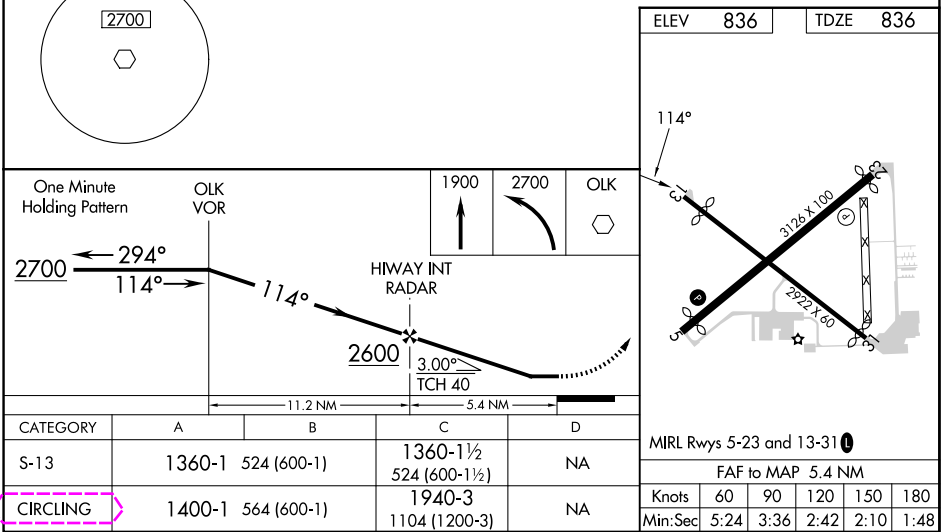
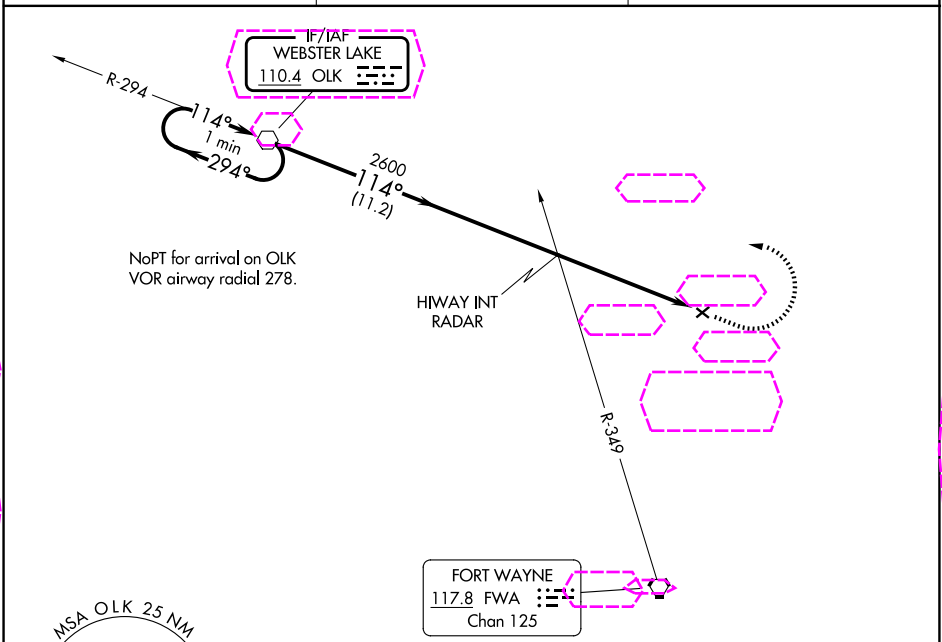
SMITH FLD (SMD)

V
NA
-22°C

Rwy 13 helicopter visibility reduction below 1 SM NA. Procedure NA at night. When local altimeter setting not received, use Fort Wayne Intl altimeter setting and increase all MDA 40 feet and S-13 Cat C visibility $\frac{1}{8}$ SM.

MISSED APPROACH: Climb to 1900 then climbing left turn to 2700 direct OLK VOR and hold.

AWOS-3 124.55	FORT WAYNE APP CON 127.2 284.6	UNICOM 122.8 (CTAF) 0
-------------------------	--	---------------------------------



FORT WAYNE, INDIANA
Amdt 11 25MAY17

41°09'N-85°09'W

SMITH FLD (SMD)
VOR RWY 13

EC-2, 07 AUG 2025 to 04 SEP 2025

EC-2, 07 AUG 2025 to 04 SEP 2025