

FORT WAYNE, INDIANA

AL-157 (FAA)

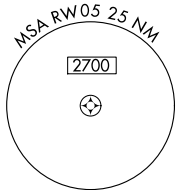
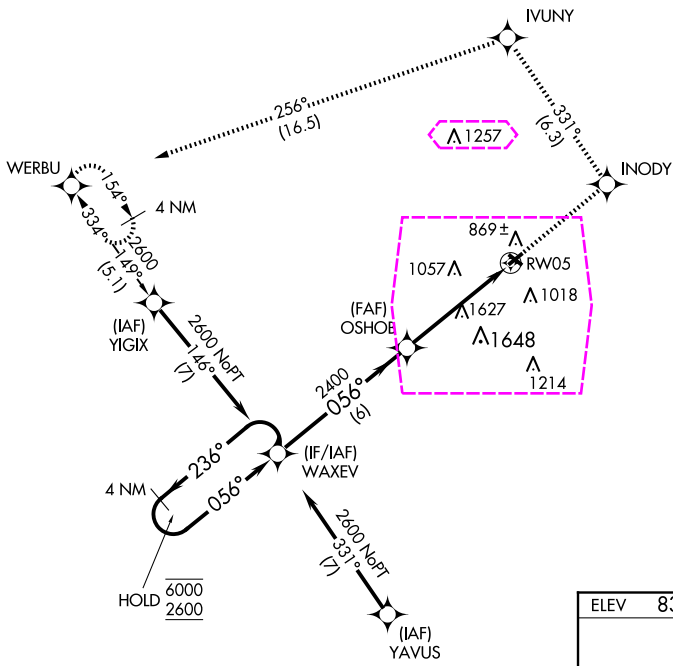
25163

APP CRS	Rwy Ldg	2925
056°	TDZE	834
	Apt Elev	836

RNAV (GPS) RWY 5

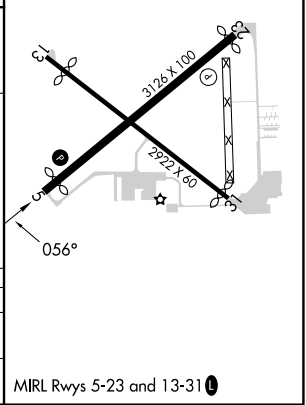
SMITH FLD (SMD)

RNP APCH - GPS.		MISSED APPROACH: Climb to 2700 direct INODY and on track 331° to IVUNY and on track 256° to WERBU and hold.
▼ ▲ NA ❄ -22°C	Rwy 5 helicopter visibility reduction below ¾ NA. Circling to Rwy 13/31 NA at night. When local altimeter setting not received, use FWA altimeter setting and increase all MDAs 40 feet. VDP NA with FWA altimeter setting.	
AWOS-3 124.55	FORT WAYNE APP CON 127.2 284.6	UNICOM 122.8 (CTAF) 0



ELEV	836	TDZE	834
------	-----	------	-----

4 NM Holding Pattern		2700	INODY	tr 331°	IVUNY	tr 256°	WERBU
WAXEV		Visual Segment - Obstacles.					
6000 2600		236°	056°	056°	2400	OSHOB	2.4 NM to RW05
VGSIs and descent angles not coincident (VGSi Angle 4.00/TCH 43).		RW05					
		6 NM					
		2.5 NM					
		2.4 NM					
CATEGORY	A	B	C	D			
LNNAV MDA	1880-1¼ 1046 (1100-1¼)	1880-1½ 1046 (1100-1½)	1880-3 1046 (1100-3)	NA			
CIRCLING	1880-1¼ 1044 (1100-1¼)	1880-1½ 1044 (1100-1½)	1940-3 1104 (1200-3)	NA			



FORT WAYNE, INDIANA
Amdt 1 17APR25

41°09'N-85°09'W

RNAV (GPS) RWY 5

SMITH FLD (SMD)

EC-2, 10 JUL 2025 to 07 AUG 2025

EC-2, 10 JUL 2025 to 07 AUG 2025

FORT WAYNE, INDIANA

AL-157 (FAA)

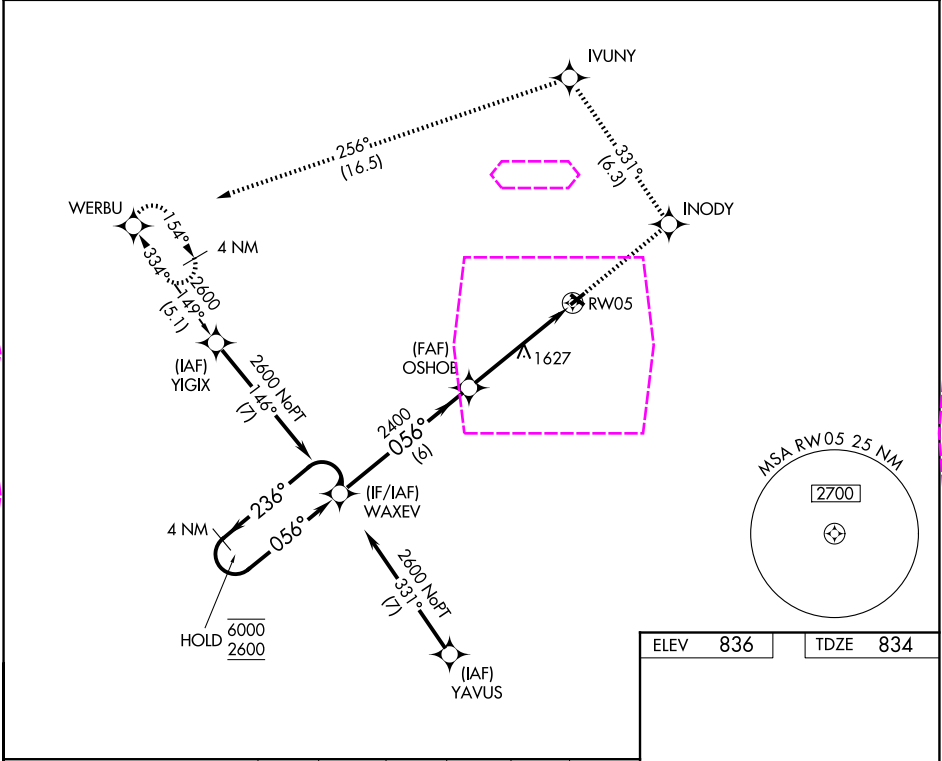
25219

APP CRS	Rwy Ldg	2925
056°	TDZE	834
	Apt Elev	836

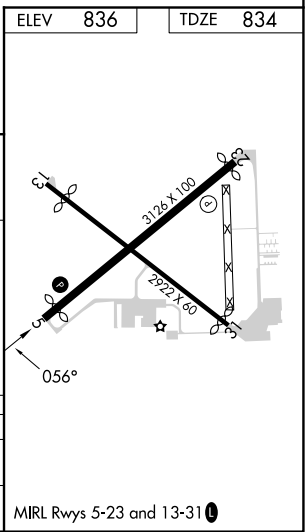
RNAV (GPS) RWY 5

SMITH FLD (SMD)

RNP APCH - GPS.		MISSED APPROACH: Climb to 2700 direct INODY and on track 331° to IVUNY and on track 256° to WERBU and hold.
▼ NA -22°C	Rwy 5 helicopter visibility reduction below ¾ NA. Circling to Rwy 13/31 NA at night. When local altimeter setting not received, use FWA altimeter setting and increase all MDAs 40 feet. VDP NA with FWA altimeter setting.	
AWOS-3 124.55	FORT WAYNE APP CON 127.2 284.6	UNICOM 122.8 (CTAF) 0



4 NM Holding Pattern		2700	INODY	tr 331°	IVUNY	tr 256°	WERBU
WAXEV		Visual Segment - Obstacles.					
6000 ← 236°		2600 → 056°	056°	OSHOB	2.4 NM to RW05	RW05	
VGSIs and descent angles not coincident (VGSi Angle 4.00/TCH 43).		2400	6 NM	2.5 NM	2.4 NM		
CATEGORY	A	B	C	D			
LNNAV MDA	1880-1¼ 1046 (1100-1¼)	1880-1½ 1046 (1100-1½)	1880-3 1046 (1100-3)	NA			
CIRCLING	1880-1¼ 1044 (1100-1¼)	1880-1½ 1044 (1100-1½)	1940-3 1104 (1200-3)	NA			



FORT WAYNE, INDIANA
Amdt 1 17APR25

41°09'N-85°09'W

SMITH FLD (SMD)
RNAV (GPS) RWY 5

EC-2, 07 AUG 2025 to 04 SEP 2025

EC-2, 07 AUG 2025 to 04 SEP 2025