

FORT WAYNE, INDIANA

AL-157 (FAA)

25163

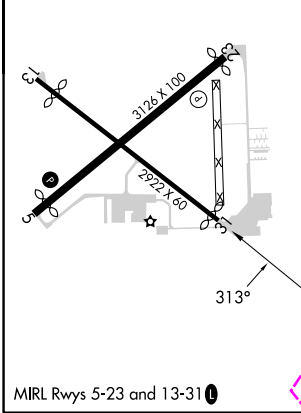
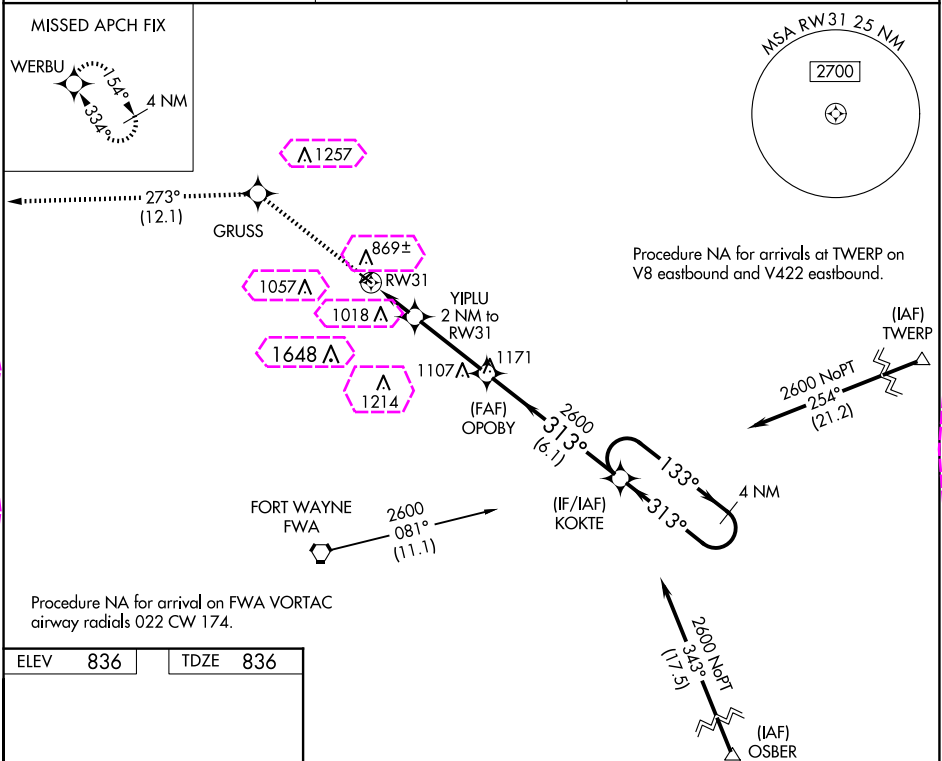
WAAS CH 77638 W31A	APP CRS 313°	Rwy Ldg 2821 TDZE 836 Apt Elev 836
--	------------------------	---

RNAV (GPS) RWY 31

SMITH FLD (SMD)

NA -22°C	Rwy 31 helicopter visibility reduction below 1 SM NA. DME/DME RNP-0.3 NA. Procedure NA at night. When local altimeter setting not received, use Fort Wayne Intl altimeter setting and increase all MDA 40 feet, LP Cat C visibility 1/4 SM and LNAV Cat C visibility 1/8 SM.	MISSED APPROACH: Climb to 2700 direct GRUSS and on track 273° to WERBU and hold.
--------------------	---	--

AWOS-3 124.55	FORT WAYNE APP CON 127.2 284.6	UNICOM 122.8 (CTAF) 0
-------------------------	--	---------------------------------



ELEV 836	TDZE 836	2700	GRUSS	tr 273°	WERBU	Visual Segment - Obstacles.	4 NM Holding Pattern
						OPOBY	KOKTE
						YIPLU 2 NM to RW31	
						RW31	
						1500	
						2 NM	3.3 NM
						6.1 NM	
CATEGORY	A	B	C	D			
LP MDA	1240-1	404 (500-1)	1240-1 1/8 404 (500-1 1/8)	NA			
LNAV MDA	1260-1	424 (500-1)	1260-1 1/4 424 (500-1 1/4)	NA			
			1940-3 1104 (1200-3)	NA			
CIRCLING	1400-1	564 (600-1)					

FORT WAYNE, INDIANA

Amdt 1A 25MAY17




41°09'N-85°09'W

SMITH FLD (SMD)

RNAV (GPS) RWY 31

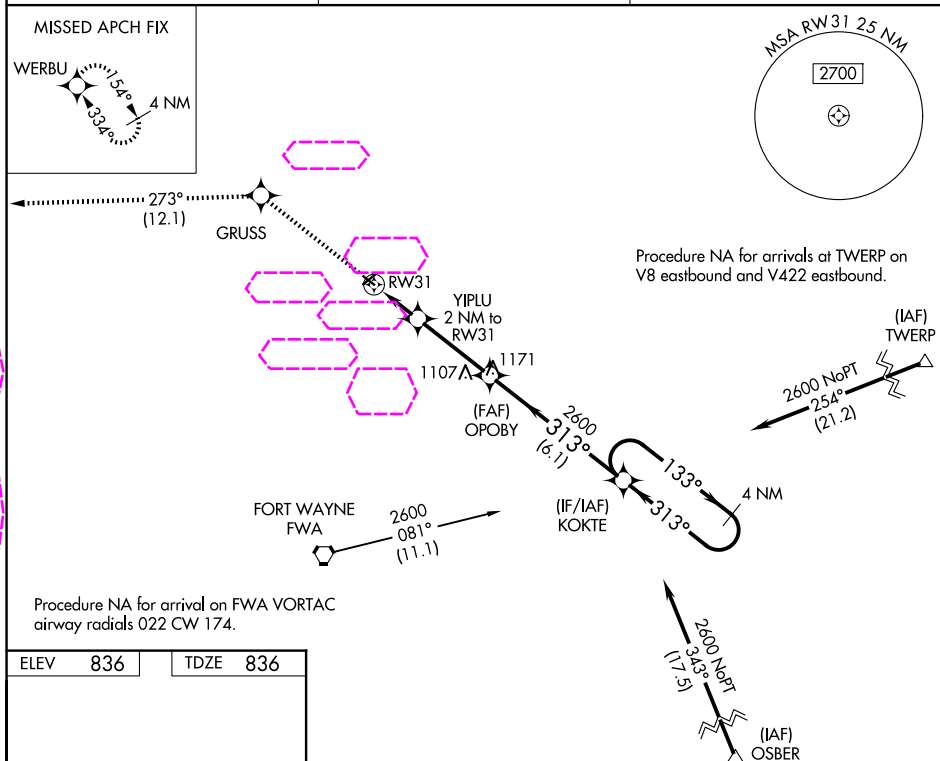
RNAV (GPS) RWY 31
SMITH FLD (SMD)

WAAS CH 77638 W31A	APP CRS 313°	Rwy Ldg 2821 TDZE 836 Apt Elev 836
--	------------------------	---

 Rwy 31 helicopter visibility reduction below 1 SM NA. DME/DME RNP-0.3 NA.
 NA Procedure NA at night. When local altimeter setting not received, use
 -22°C Fort Wayne Intl altimeter setting and increase all MDA 40 feet, LP Cat C
visibility $\frac{1}{2}$ SM and LNAV Cat C visibility $\frac{1}{2}$ SM.

MISSED APPROACH: Climb to 2700 direct GRUSS and on track 273° to WERBU and hold.

AWOS-3 124.55	FORT WAYNE APP CON 127.2 284.6	UNICOM 122.8 (CTAF) 0
-------------------------	--	---------------------------------



CATEGORY	A	B	C	D
LP MDA	1240-1	404 (500-1)	1240-1 $\frac{1}{8}$ 404 (500-1 $\frac{1}{8}$)	NA
LNAV MDA	1260-1	424 (500-1)	1260-1 $\frac{1}{4}$ 424 (500-1 $\frac{1}{4}$)	NA
CIRCLING	1400-1	564 (600-1)	1940-3 1104 (1200-3)	NA