




RNAV (GPS) RWY 23
SMITH FLD (SMD)

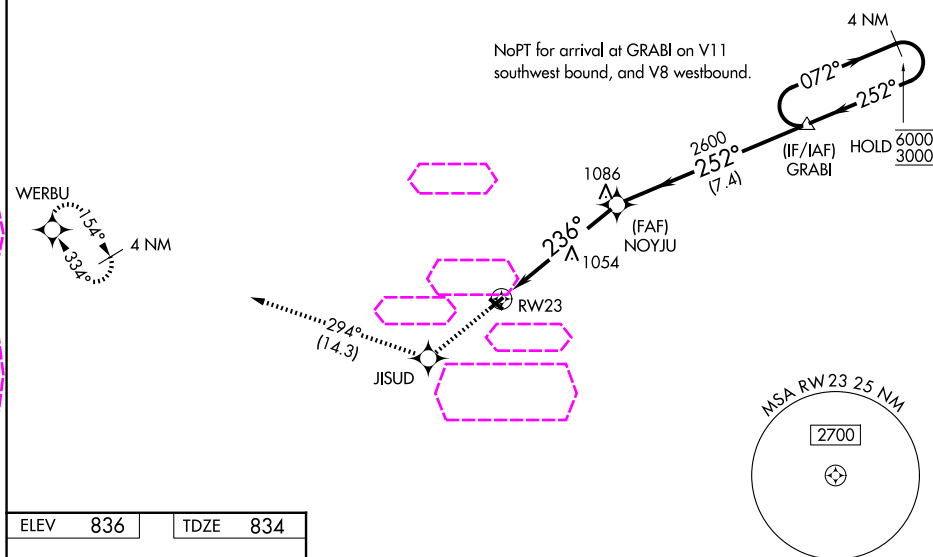
RNP APCH - GPS	
----------------	--

 Rwy 23 helicopter visibility reduction below 1 SM NA. Circling to Rwy 13/31
 NA at night. When local altimeter setting not received, use FWA altimeter
 -22°C setting and increase all MDAs 40 feet and LNAV visibility Cat C $\frac{1}{2}$ SM and LP
visibility Cat C $\frac{1}{2}$ SM.

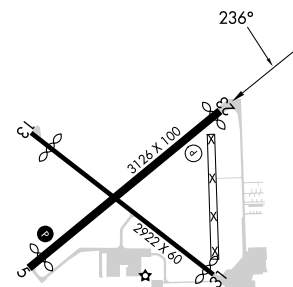
MISSED APPROACH: Climb to 2700 direct JISUD and on track 294° to WERBU and hold.

AWOS-3
124.55

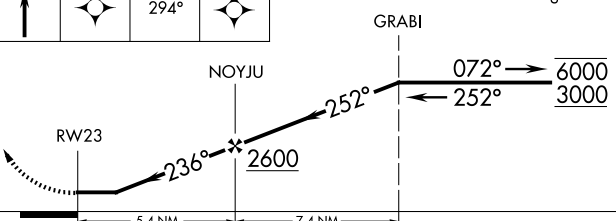
FORT WAYNE APP CON
127.2 284.6

UNICOM
122.8 (CTAF) **L**

ELEV	836		TDZE	834
------	-----	--	------	-----



2700	JISUD	tr	WERBU	Visual Segment - Obstacles.	4 NM Holding Pattern
------	-------	----	-------	-----------------------------	-------------------------



CATEGORY	A	B	C	D
LP MDA	1360-1	526 (600-1)	1360-1½ 526 (600-1½)	NA
LNAV MDA	1400-1	566 (600-1)	1400-1½ 566 (600-1½)	NA
CIRCLING	1400-1	564 (600-1)	1940-3 1104 (1200-3)	NA

FORT WAYNE, INDIANA
Amdt 2 17APR25

41°09'N-85°09'W

SMITH FLD (SMD)
RNAV (GPS) RWY 23

EC-2, 07 AUG 2025 to 04 SEP 2025

EC-2, 07 AUG 2025 to 04 SEP 2025.