

FORT WAYNE, INDIANA

AL-157 (FAA)

25163

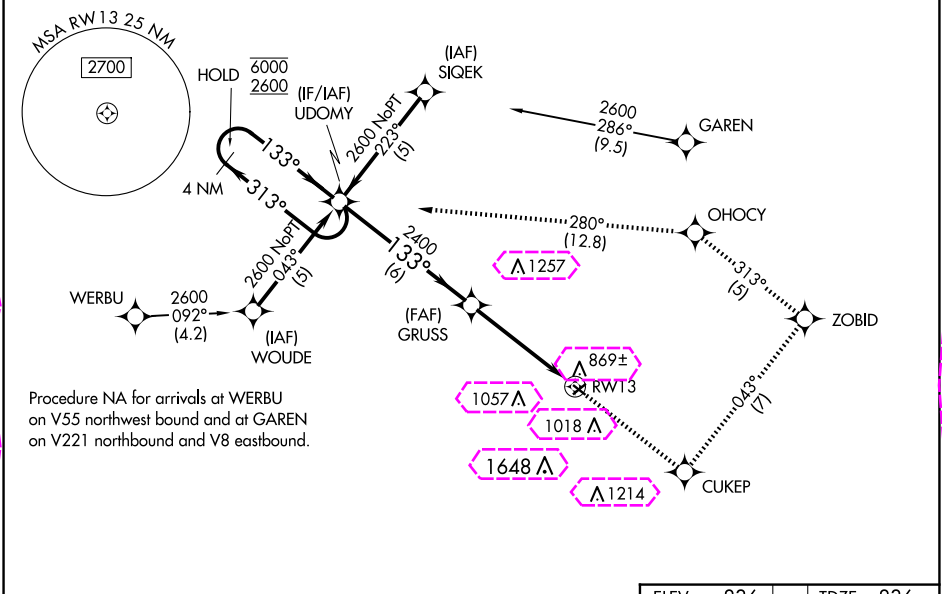
WAAS CH 69220 W13A	APP CRS 133°	Rwy Ldg TDZE 836 Apt Elev 836
--	------------------------	---

RNAV (GPS) RWY 13

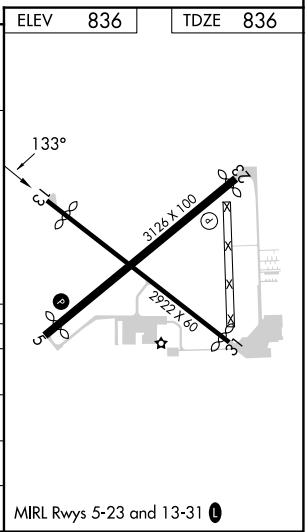
SMITH FLD (SMD)

RNP APCH.	Procedure NA at night. Rwy 13 helicopter visibility reduction below 1 SM NA. For uncompensated Baro-VNAV systems, LNAV/VNAV NA below -16°C or above 54°C. When local altimeter setting not received, use Fort Wayne Intl altimeter setting: increase LPV DA to 1162 feet; LNAV/VNAV DA to 1435 feet; increase all MDA 40 feet and LNAV Cat C visibility ¼ SM. Baro-VNAV NA when using Fort Wayne Intl altimeter setting.	MISSED APPROACH: Climb to 2600 direct CUKEP and on track 043° to ZOBID and on track 313° to OHOCY and on track 280° to UDOMY and hold.
-----------	--	--

AWOS-3 124.55	FORT WAYNE APP CON 127.2 284.6	UNICOM 122.8 (CTAF) 0
-------------------------	--	---------------------------------



	2600	CUKEP	tr 043°	ZOBID	tr 313°	OHOCY	tr 280°	UDOMY
4 NM Holding Pattern	UDOMY							
6000	← 313°							
2600	→ 133°							
GP 3.00° TCH 40								
				GRUSS	2400			RW13
					2400			
					6 NM		4.7 NM	
CATEGORY	A	B	C	D				
LPV DA	1135-1	299 (300-1)		NA				
LNAV/VNAV DA	1408-2	572 (600-2)		NA				
LNAV MDA	1340-1	504 (600-1)	1340-1½ 504 (600-1½)	NA				
CIRCLING	1400-1	564 (600-1)	1940-3 1104 (1200-3)	NA				



EC-2, 10 JUL 2025 to 07 AUG 2025

EC-2, 10 JUL 2025 to 07 AUG 2025

FORT WAYNE, INDIANA

AL-157 (FAA)

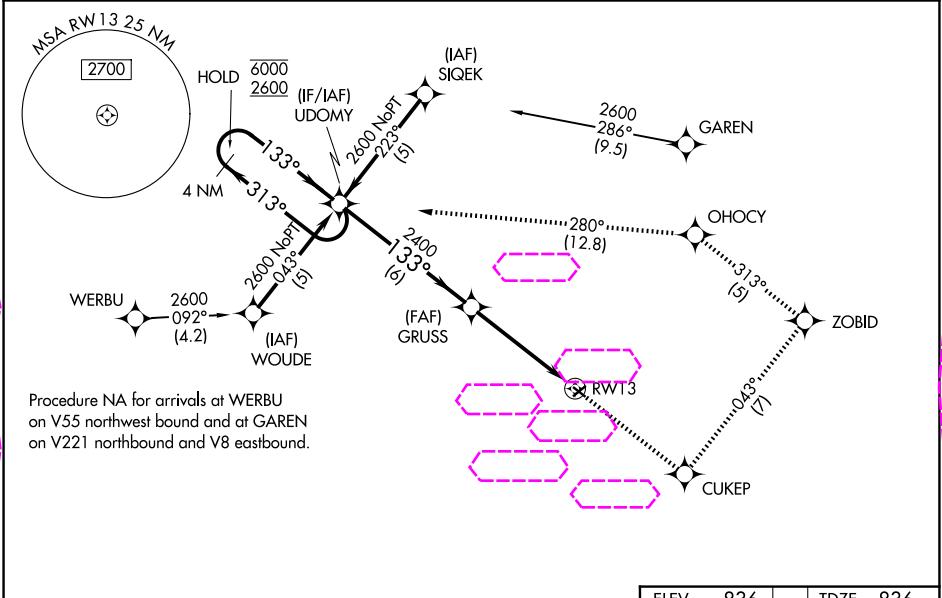
25219

WAAS CH 69220 W13A	APP CRS 133°	Rwy Ldg TDZE 836 Apt Elev 836
--	------------------------	---

RNAV (GPS) RWY 13

SMITH FLD (SMD)

RNP APCH. ▼ NA -22°C Procedure NA at night. Rwy 13 helicopter visibility reduction below 1 SM NA. For uncompensated Baro-VNAV systems, LNAV/VNAV NA below -16°C or above 54°C. When local altimeter setting not received, use Fort Wayne Intl altimeter setting: increase LPV DA to 1162 feet; LNAV/VNAV DA to 1435 feet; increase all MDA 40 feet and LNAV Cat C visibility ¼ SM. Baro-VNAV NA when using Fort Wayne Intl altimeter setting.		MISSED APPROACH: Climb to 2600 direct CUKEP and on track 043° to ZOBID and on track 313° to OHOCY and on track 280° to UDOMY and hold.
AWOS-3 124.55	FORT WAYNE APP CON 127.2 284.6	UNICOM 122.8 (CTAF) 0



ELEV 836		TDZE 836					
2600	CUKEP	tr 043°	ZOBID	tr 313°	OHOCY	tr 280°	UDOMY
4 NM Holding Pattern							
GP 3.00° TCH 40							
CATEGORY	A	B	C	D			
LPV DA	1135-1	299 (300-1)		NA			
LNAV/VNAV DA	1408-2	572 (600-2)		NA			
LNAV MDA	1340-1	504 (600-1)	1340-1½ 504 (600-1½)	NA			
CIRCLING	1400-1	564 (600-1)	1940-3 1104 (1200-3)	NA			
MIRL Rwy 5-23 and 13-31 0							

FORT WAYNE, INDIANA
Orig-A 20JUN19

41°09'N-85°09'W

RNAV (GPS) RWY 13

EC-2, 07 AUG 2025 to 04 SEP 2025

EC-2, 07 AUG 2025 to 04 SEP 2025