

FORT WAYNE, INDIANA

AL-156 (FAA)

24249

VORTAC FWA <b>117.8</b> Chan <b>125</b>	APP CRS <b>054°</b>	Rwy Idg <b>11981</b> TDZE <b>815</b> Apt Elev <b>815</b>
---	------------------------	--

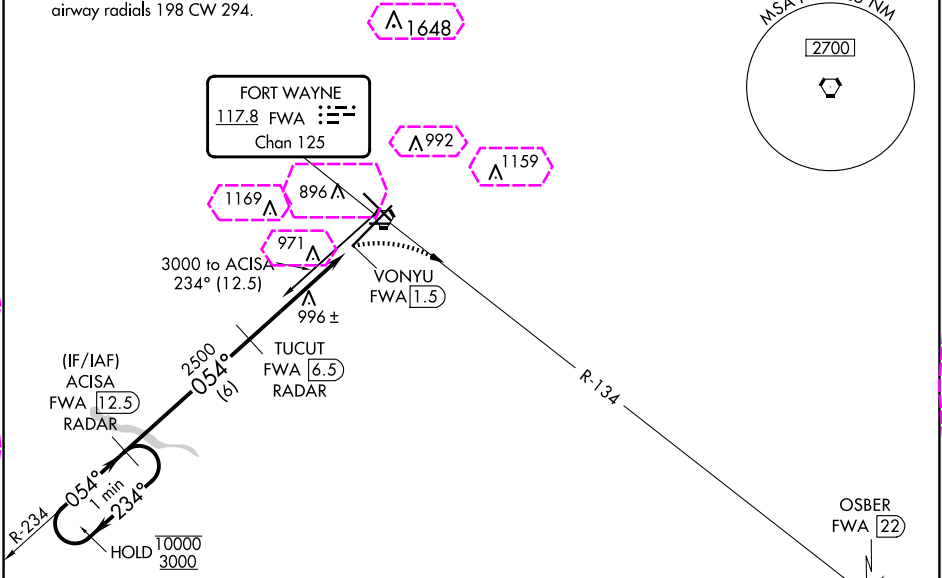
# VOR or TACAN RWY 5

FORT WAYNE INTL (FWA)

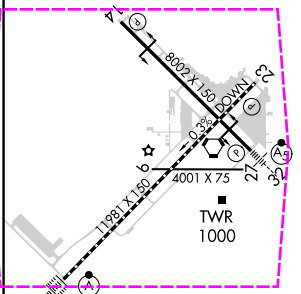
DME or RADAR required.		ALSF-2 	MISSED APPROACH: Climbing right turn to 3000 on FWA VORTAC R-134 to OSBER INT/FWA 22 DME and hold.
 ASR	For inop ALS, increase S-5 Cat C/D/E visibility to 1½ SM.		

ATIS <b>121.25 360.825</b>	FORT WAYNE APP CON <b>127.2 284.6</b>	FORT WAYNE TOWER <b>119.1 269.325</b>	GND CON <b>121.9 348.6</b>	CLNC DEL <b>124.75</b>
-------------------------------	--	--	-------------------------------	---------------------------

Procedure NA for arrival on FWA VORTAC  
airway radials 198 CW 294.



ELEV 815	D	TDZE 815
HIRL Rwy 5-23 and 14-32 REIL Rwy 14 and 23 TDZ/CL Rwy 5		



One Minute Holding Pattern	ACISA FWA (12.5) RADAR	TUCUT FWA (6.5) RADAR	3000	FWA R-134	OSBER
CATEGORY	A	B	C	D	E
S-5	1320/24	505 (600-1/2)	1320/55	505 (600-1)	1320/60
<b>CIRCLING</b>	1320-1	505 (600-1)	1360-1 1/2 545 (600-1 1/2)	1520-2 1/4 705 (800-2 1/4)	1520-2 1/2 705 (800-2 1/2)

FORT WAYNE, INDIANA  
Amdt 20B 23MAY19

40°59'N-85°12'W

# VOR or TACAN RWY 5

EC-2, 10 JUL 2025 to 07 AUG 2025

EC-2, 10 JUL 2025 to 07 AUG 2025

FORT WAYNE, INDIANA

AL-156 (FAA)

25219

VORTAC FWA	APP CRS	Rwy Ldg
117.8	054°	11981
Chan 125	TDZE	815
	Apt Elev	815

# VOR or TACAN RWY 5

FORT WAYNE INTL (FWA)

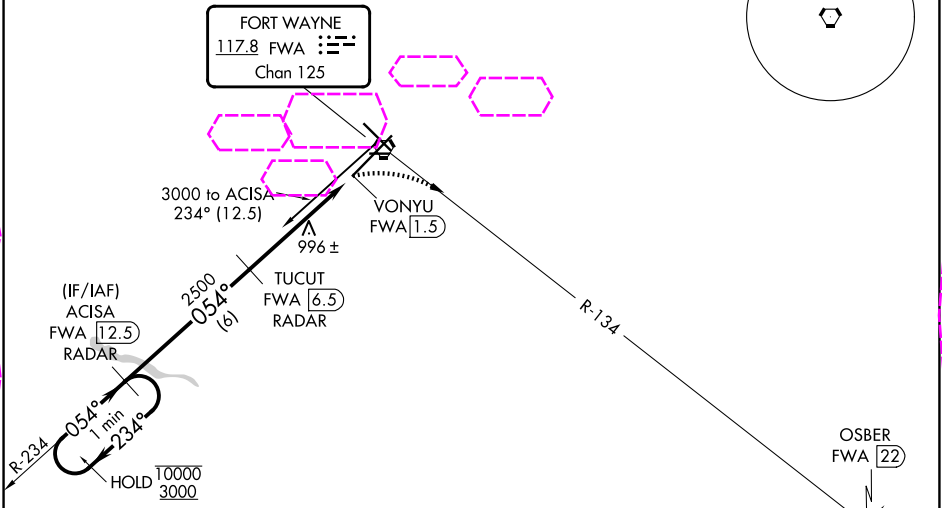
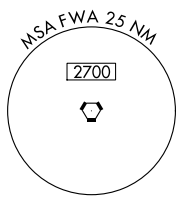
DME or RADAR required.

ALSIF-2

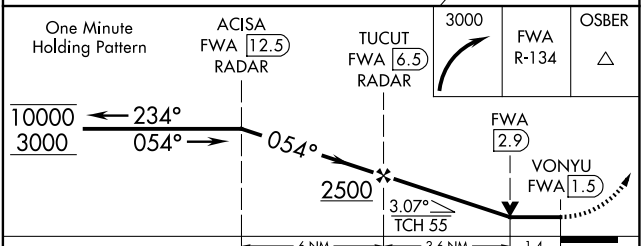
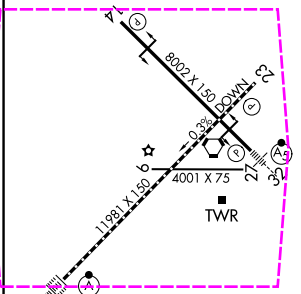
MISSED APPROACH: Climbing right turn to 3000 on FWA VORTAC R-134 to OSBER INT/FWA 22 DME and hold.

ATIS	FORT WAYNE APP CON	FORT WAYNE TOWER	GND CON	CLNC DEL
121.25 360.825	127.2 284.6	119.1 269.325	121.9 348.6	124.75

Procedure NA for arrival on FWA VORTAC  
airway radials 198 CW 294.



ELEV 815	TDZE 815
HIRL Rwy 5-23 and 14-32	
REIL Rwy 14 and 23	
TDZ/CL Rwy 5	



FAF to MAP 5 NM					
Knots	60	90	120	150	180
Min:Sec	5:00	3:20	2:30	2:00	1:40

CATEGORY	A	B	C	D	E
S-5	1320/24	505 (600-1/2)	1320/55	505 (600-1)	1320/60
CIRCLING	1320-1	505 (600-1)	1360-1 1/2	1520-2 1/4	1520-2 1/2
			545 (600-1 1/2)	705 (800-2 1/4)	705 (800-2 1/2)

FORT WAYNE, INDIANA  
Amdt 20B 23MAY19

40°59'N-85°12'W

# VOR or TACAN RWY 5

EC-2, 07 AUG 2025 to 04 SEP 2025

EC-2, 07 AUG 2025 to 04 SEP 2025