

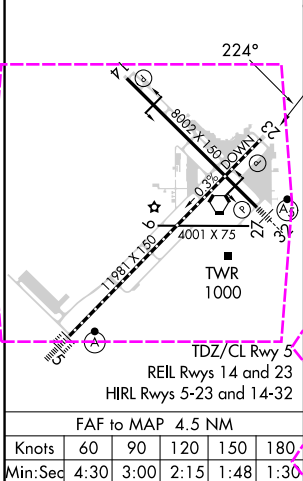
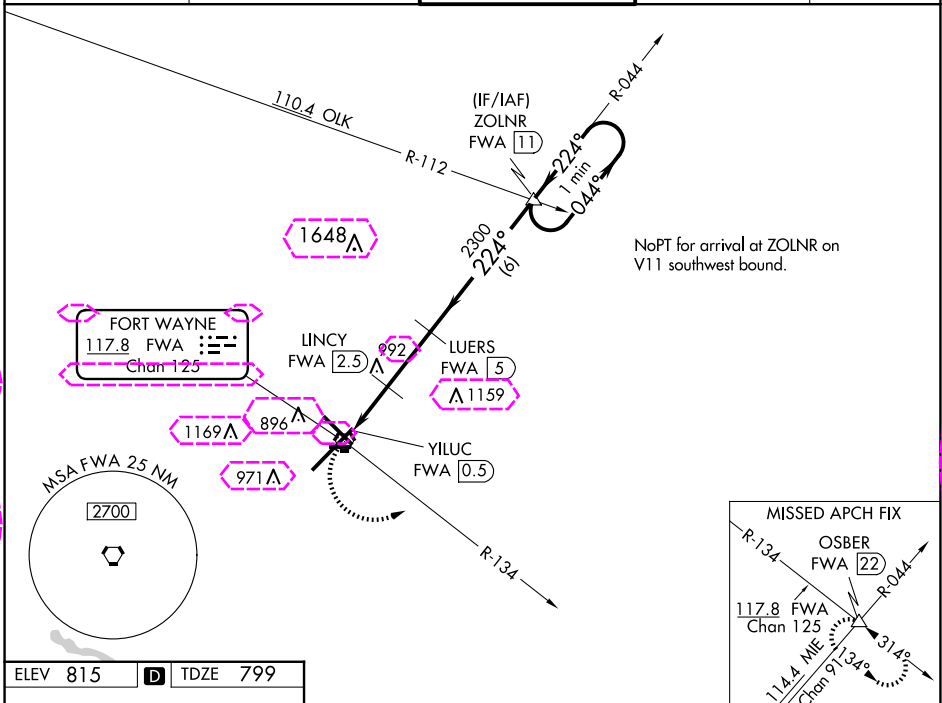


VORTAC FWA <u>117.8</u> Chan 125	APP CRS 224°	Rwy Idg 11981 TDZE 799 Apt Elev 815
--	------------------------	--

VOR or TACAN RWY 23
FORT WAYNE INTL (FWA)

  ASR		MISSED APPROACH: Climbing left turn to 3000 on FWA VORTAC R-134 to OSBER INT/FWA 22 DME and hold.			
ATIS 121.25 360.825		FORT WAYNE APP CON 127.2 284.6		FORT WAYNE TOWER 119.1 269.325	
				GND CON 121.9 348.6	
				CLNC DEL 124.75	





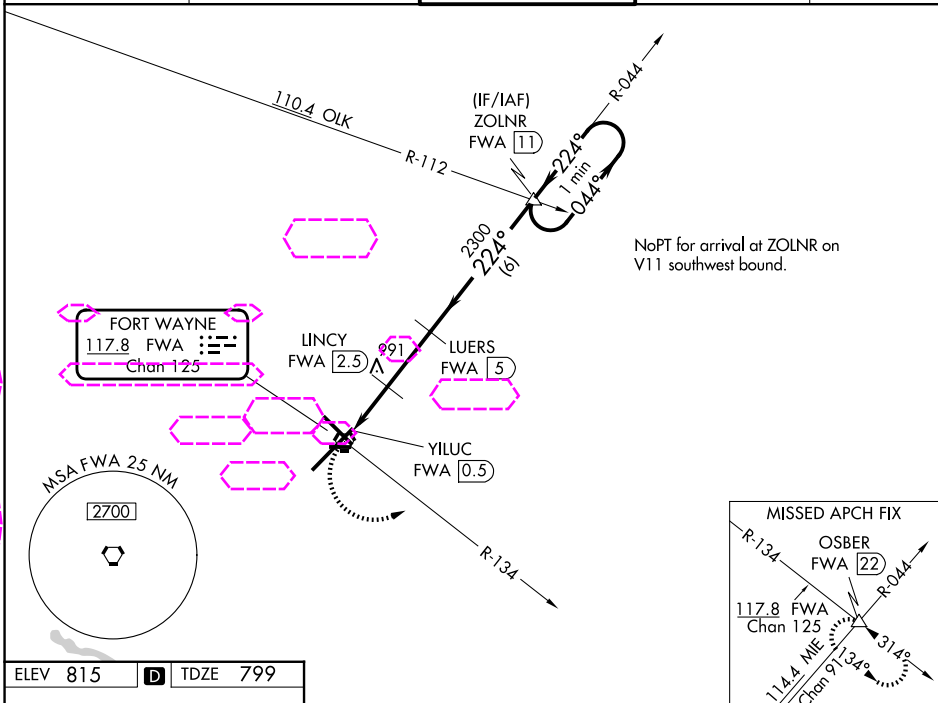
CATEGORY	A	B	C	D	E
S-23	1400/55	601 (600-1)	1400-1 ³ / ₄	601 (600-1 ³ / ₄)	
CIRCLING	1400-1	585 (600-1)	1420-1 ³ / ₄ 605 (700-1 ³ / ₄)	1520-2 ¹ / ₄ 705 (800-2 ¹ / ₄)	1520-2 ¹ / ₂ 705 (800-2 ¹ / ₂)
LINC FIX MINIMUMS					
S-23	1300/55	501 (500-1)	1300-1 ³ / ₈	501 (500-1 ³ / ₈)	
CIRCLING	1300-1	485 (500-1)	1420-1 ³ / ₄ 605 (700-1 ³ / ₄)	1520-2 ¹ / ₄ 705 (800-2 ¹ / ₄)	1520-2 ¹ / ₂ 705 (800-2 ¹ / ₂)

FORT WAYNE, INDIANA

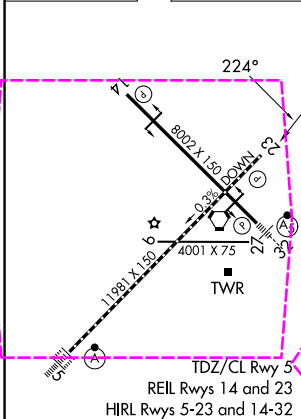
VORTAC FWA <u>117.8</u> Chgn 125	APP CRS 224°	Rwy Ldg 11981 TDZE 799 Apt Elev 815
---	------------------------	--

VOR or TACAN RWY 23
FORT WAYNE INTL (FWA)

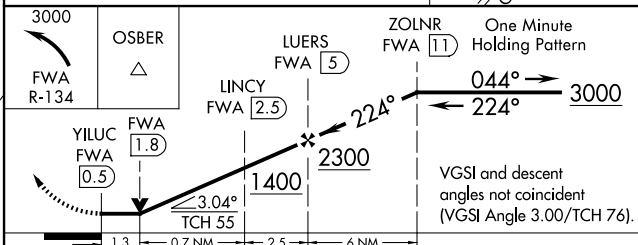
  ASR		MISSED APPROACH: Climbing left turn to 3000 on FWA VORTAC R-134 to OSBER INT/FWA 22 DME and hold.			
ATIS 121.25 360.825		FORT WAYNE APP CON 127.2 284.6		FORT WAYNE TOWER 119.1 269.325	
				GND CON 121.9 348.6	
				CLNC DEL 124.75	



ELEV 815	D	TDZE 799
----------	----------	----------



FAF to MAP 4.5 NM					
Knots	60	90	120	150	180
Min:Sec	4:30	3:00	2:15	1:48	1:30



CATEGORY	A	B	C	D	E
S-23	1400/55 601 (600-1)	1400-1 ³ / ₄ 601 (600-1 ³ / ₄)			
CIRCLING	1400-1 585 (600-1)	1420-1 ³ / ₄ 605 (700-1 ³ / ₄)	1520-2 ¹ / ₄ 705 (800-2 ¹ / ₄)	1520-2 ¹ / ₂ 705 (800-2 ¹ / ₂)	
LINCY FIX MINIMUMS					
S-23	1300/55 501 (500-1)	1300-1 ³ / ₈ 501 (500-1 ³ / ₈)			
CIRCLING	1300-1 485 (500-1)	1420-1 ³ / ₄ 605 (700-1 ³ / ₄)	1520-2 ¹ / ₄ 705 (800-2 ¹ / ₄)	1520-2 ¹ / ₂ 705 (800-2 ¹ / ₂)	

FORT WAYNE, INDIANA
Amdt 14 27APR17

40°59'N-85°12'W

FORT WAYNE INTL (FWA)

VOR or TACAN RWY 23

EC-2, 07 AUG 2025 to 04 SEP 2025

EC-2, 07 AUG 2025 to 04 SEP 2025