

FORT WAYNE, INDIANA

AL-156 (FAA)

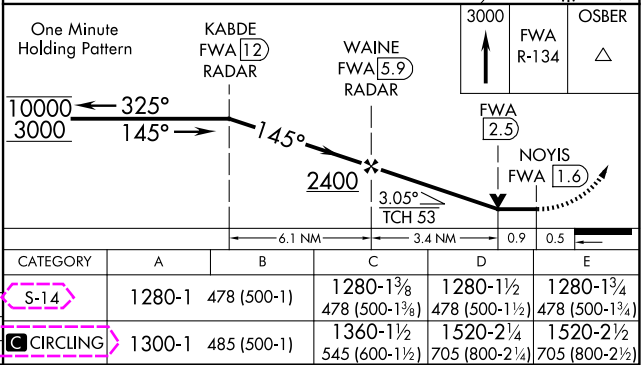
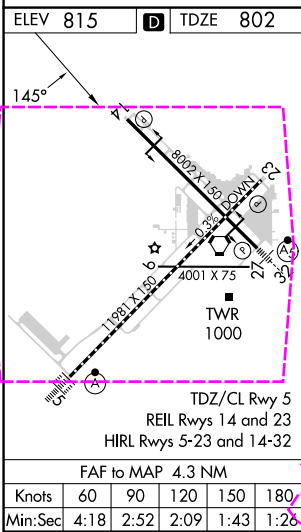
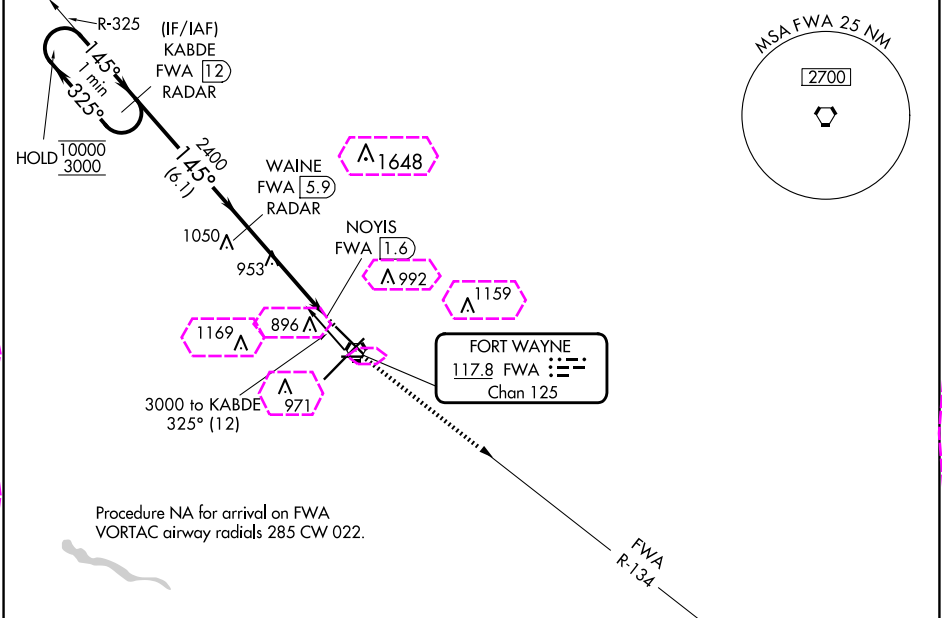
24249

VORTAC FWA	APP CRS	Rwy Idg	8001
117.8	145°	TDZE	802
Chan 125		Apt Elev	815

# VOR or TACAN RWY 14

FORT WAYNE INTL (FWA)

DME or RADAR required.		MISSED APPROACH: Climb to 3000 on FWA R-134 to OSBER INT/FWA 22 DME and hold.		
ATIS 121.25 360.825		FORT WAYNE APP CON 127.2 284.6		FORT WAYNE TOWER 119.1 269.325
				GND CON 121.9 348.6
				CLNC DEL 124.75



FORT WAYNE, INDIANA  
Amdt 17B 23MAY19

40°59'N-85°12'W

# VOR or TACAN RWY 14

EC-2, 10 JUL 2025 to 07 AUG 2025

EC-2, 10 JUL 2025 to 07 AUG 2025

FORT WAYNE, INDIANA

AL-156 (FAA)

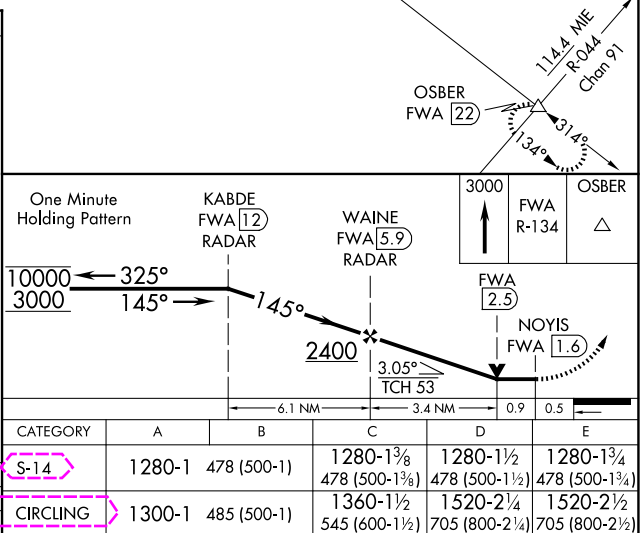
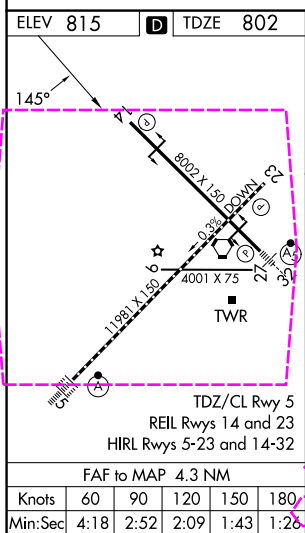
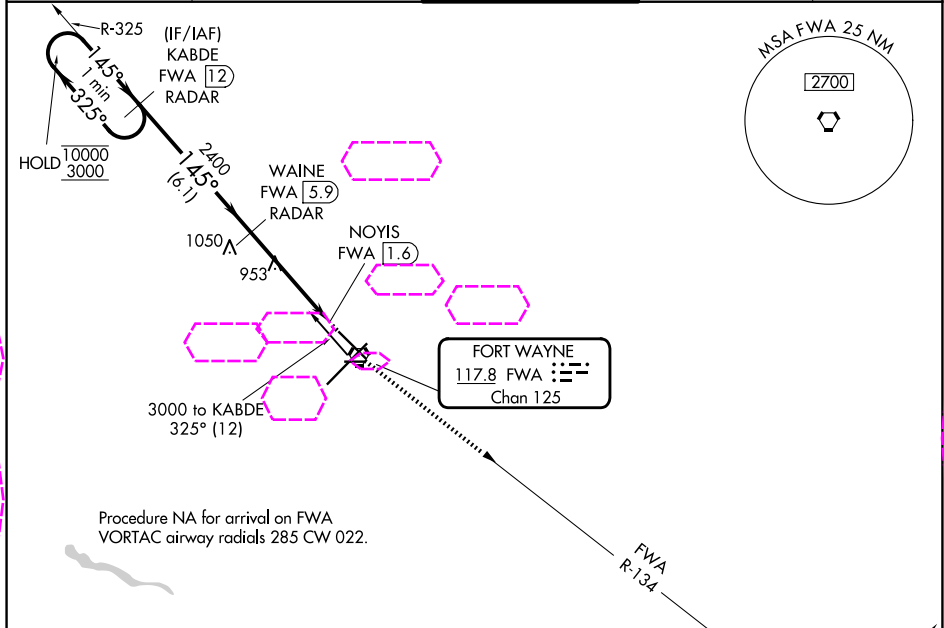
25219

VORTAC FWA	APP CRS	Rwy Ldg	8001
117.8	145°	TDZE	802
Chan 125		Apt Elev	815

# VOR or TACAN RWY 14

FORT WAYNE INTL (FWA)

DME or RADAR required.		MISSED APPROACH: Climb to 3000 on FWA R-134 to OSBER INT/FWA 22 DME and hold.		
ATIS 121.25 360.825		FORT WAYNE APP CON 127.2 284.6	FORT WAYNE TOWER 119.1 269.325	CLNC DEL 124.75



FORT WAYNE, INDIANA  
Amdt 17B 23MAY19

40°59'N-85°12'W

# VOR or TACAN RWY 14

EC-2, 07 AUG 2025 to 04 SEP 2025

EC-2, 07 AUG 2025 to 04 SEP 2025