

FORT WAYNE, INDIANA

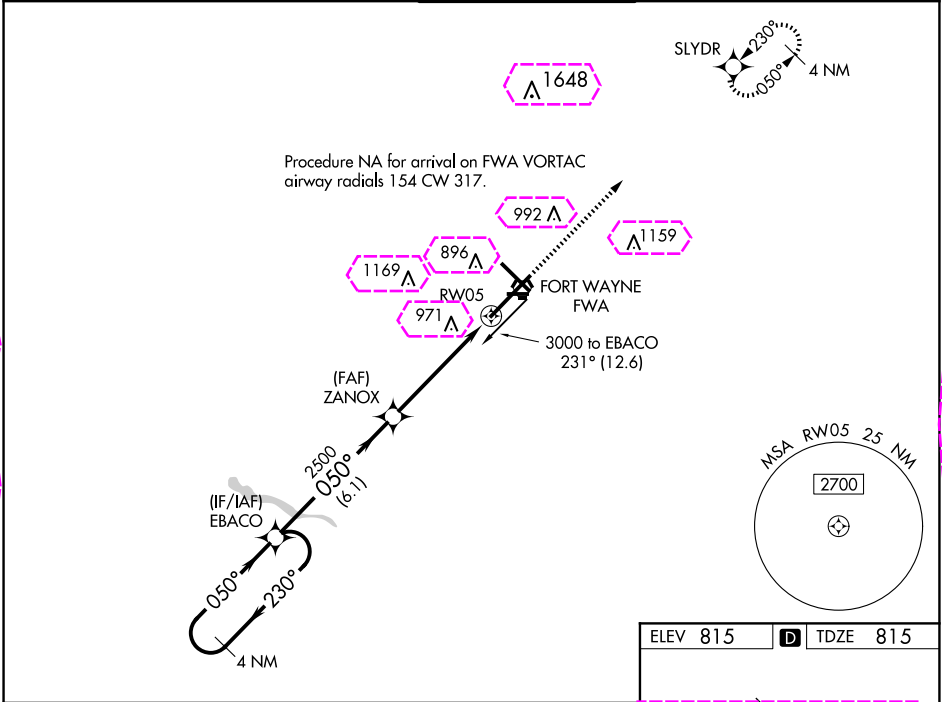
AL-156 (FAA)

24249

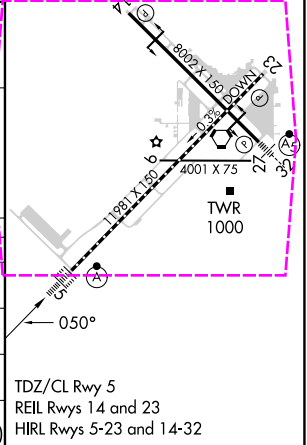
WAAS CH 93609 W05A	APP CRS 050°	Rwy Idg 11981 TDZE 815 App Elev 815
--	------------------------	--

RNAV (GPS) RWY 5
FORT WAYNE INTL (FWA)

ASR For uncompensated Baro-VNAV systems, procedure NA below -16°C (4°F) or above 47°C (116°F). DME/DME RNP-0.3 NA. For inop ALS, increase LPV Cat E visibility to RVR 4000, LNAV/VNAV all Cats visibility to 1½ SM and LNAV Cat C/D/E visibility to 1¾ SM.	ALSF-2 	MISSED APPROACH: Climb to 3000 direct SLYDR and hold.
ATIS 121.25 360.825	FORT WAYNE APP CON 127.2 284.6	FORT WAYNE TOWER 119.1 269.325
GND CON 121.9 348.6	CLNC DEL 124.75	



<div>4 NM Holding Pattern</div> <div>EBACO</div> <div>ZANOX</div> <div>3000</div> <div>230°</div> <div>050°</div> <div>050°</div> <div>2500</div> <div>2500</div> <div>* 1.4 NM to RW05</div> <div>RW05</div> <div>GP 3.00°</div> <div>TCH 55</div> <div>3000</div> <div>SLYDR</div> <div>* LNAV only</div>						
CATEGORY		A	B	C	D	E
LPV DA	1065/18 250 (300-½)					
LNAV/VNAV DA	1275/60 460 (500-1¼)					
LNAV MDA	1300/24	485 (500-½)	1300/50 485 (500-1)			
<div>CIRCLING</div>	1300-1	485 (500-1)	1420-1¾ 605 (700-1¾)	1520-2¼ 705 (800-2¼)	1520-2½ 705 (800-2½)	



FORT WAYNE, INDIANA
Amdt 1B 12OCT17

40°59'N-85°12'W

FORT WAYNE INTL (FWA)
RNAV (GPS) RWY 5

EC-2, 10 JUL 2025 to 07 AUG 2025

EC-2, 10 JUL 2025 to 07 AUG 2025

WAAS CH 93609 W05A	APP CRS 050°	Rwy Ldg 11981 TDZE 815 Apt Elev 815
--	------------------------	--

RNAV (GPS) RWY 5
FORT WAYNE INTL (FWA)

<div><div><div></div><div></div></div><div>ASR</div></div>	For uncompensated Baro-VNAV systems, procedure NA below -16°C (4°F) or above 47°C (116°F). DME/DME RNP-0.3 NA. For inop ALS, increase LPV Cat E visibility to RVR 4000, INAV/VNAV all Cats visibility to 1½ SM and INAV Cat C/D/E visibility to 1¾ SM.		ALSF-2 <div><div></div><div></div></div>	MISSED APPROACH: Climb to 3000 direct SLYDR and hold.	
	ATIS 121.25 360.825	FORT WAYNE APP CON 127.2 284.6	FORT WAYNE TOWER 119.1 269.325	GND CON 121.9 348.6	CLNC DEL 124.75

