

FORT WAYNE, INDIANA

AL-156 (FAA)

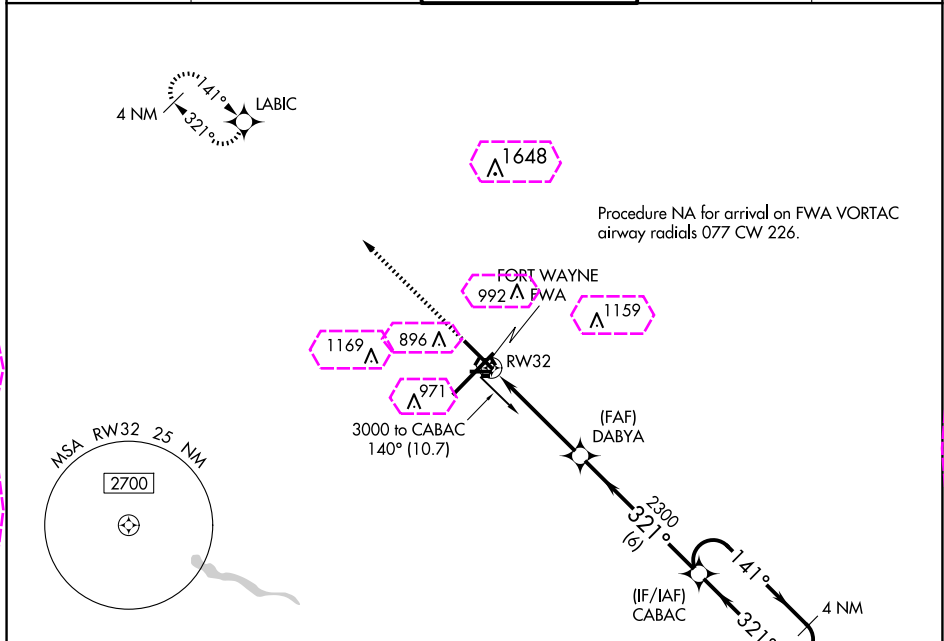
24249

WAAS CH 82417 W32A	APP CRS 321°	Rwy Idg TDZE 800 Apt Elev 815
--	------------------------	---

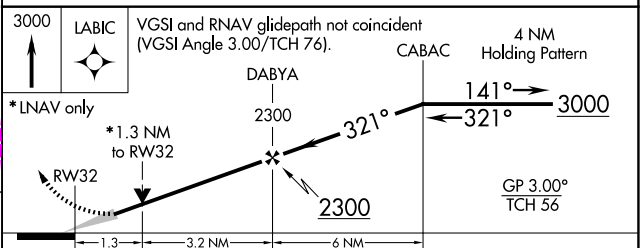
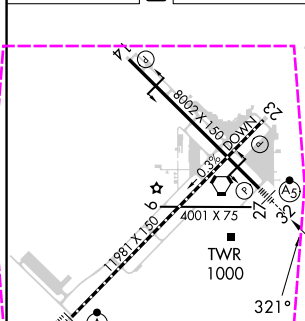
RNAV (GPS) RWY 32

FORT WAYNE INTL (FWA)

<div><div><div><div></div><div></div></div><div></div></div><div>ASR</div></div>	For uncompensated Baro-VNAV systems, LNAV/VNAV NA below -16°C (4°F) or above 47°C (116°F). DME/DME RNP-0.3 NA. ** RVR 1800 authorized with use of FD or AP or HUD to DA.		<div><div><div><div></div><div></div></div><div></div></div><div>MALSR</div></div>	MISSED APPROACH: Climb to 3000 direct LABIC and hold.		
ATIS 121.25 360.825		FORT WAYNE APP CON 127.2 284.6	FORT WAYNE TOWER 119.1 269.325		GND CON 121.9 348.6	CLNC DEL 124.75



ELEV 815	D	TDZE 800
-----------------	----------	-----------------



CATEGORY	A	B	C	D
LPV DA	**1000/24 200 (200-½)			
LNAV/VNAV DA	1250/50 450 (500-1)			
LNAV MDA	1280/24	480 (500-½)	1280/50	480 (500-1)
CIRCLING	1300-1	485 (500-1)	1420-1¾ 605 (700-1¾)	1520-2¼ 705 (800-2¼)

FORT WAYNE, INDIANA
Amdt 1B 17AUG17

40°59'N-85°12'W

FORT WAYNE INTL (FWA)
RNAV (GPS) RWY 32

EC-2, 10 JUL 2025 to 07 AUG 2025

EC-2, 10 JUL 2025 to 07 AUG 2025

FORT WAYNE, INDIANA

AL-156 (FAA)

25219

WAAS CH 82417 W32A	APP CRS 321°	Rwy Ldg TDZE 800 Apt Elev 815
--	------------------------	---

RNAV (GPS) RWY 32
FORT WAYNE INTL (FWA)

ASR

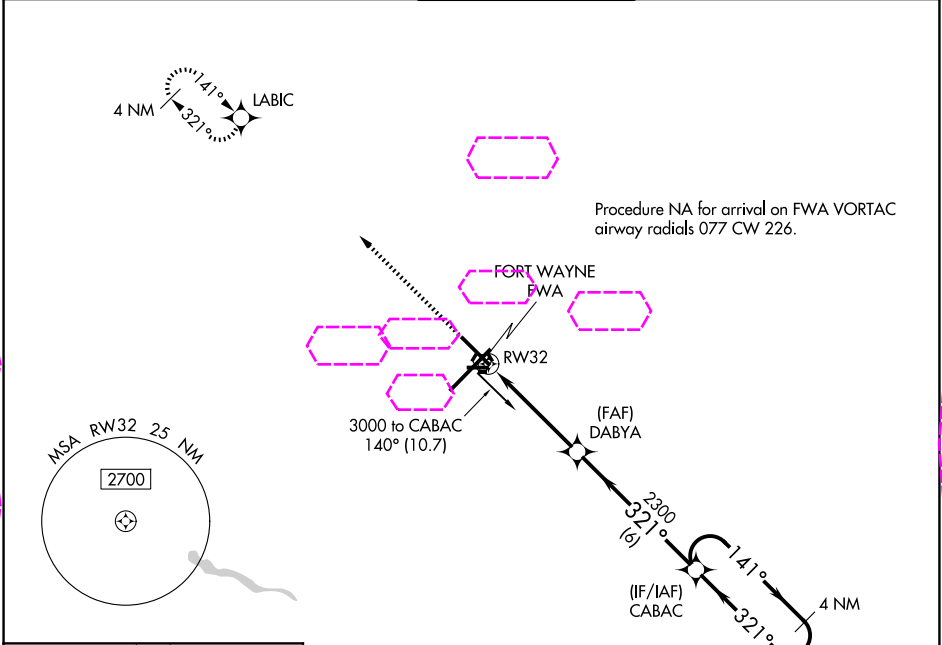
For uncompensated Baro-VNAV systems, LNAV/VNAV NA below -16°C (4°F) or above 47°C (116°F).
DME/DME RNP-0.3 NA.
** RVR 1800 authorized with use of FD or AP or HUD to DA.

MALSR

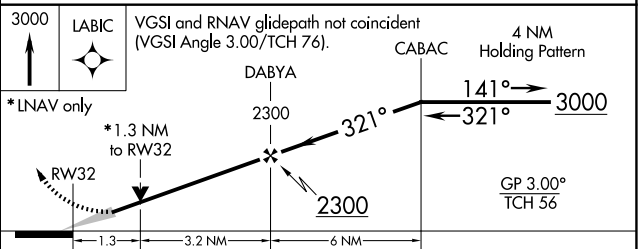
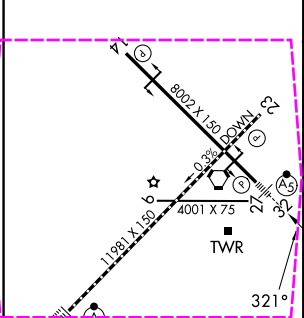
(AS)

MISSED APPROACH: Climb to 3000 direct LABIC and hold.

ATIS 121.25 360.825	FORT WAYNE APP CON 127.2 284.6	FORT WAYNE TOWER 119.1 269.325	GND CON 121.9 348.6	CLNC DEL 124.75
-------------------------------	--	--	-------------------------------	---------------------------



ELEV 815	D	TDZE 800
-----------------	----------	-----------------



CATEGORY	A	B	C	D
LPV DA	**1000/24 200 (200-½)			
LNAV/VNAV DA	1250/50 450 (500-1)			
LNAV MDA	1280/24	480 (500-½)	1280/50	480 (500-1)
CIRCLING	1300-1	485 (500-1)	1420-1¾ 605 (700-1¾)	1520-2¼ 705 (800-2¼)

FORT WAYNE, INDIANA
Amdt 1B 17AUG17

40°59'N-85°12'W

FORT WAYNE INTL (FWA)
RNAV (GPS) RWY 32

EC-2, 07 AUG 2025 to 04 SEP 2025

EC-2, 07 AUG 2025 to 04 SEP 2025