

FORT WAYNE, INDIANA


AL-156 (FAA)

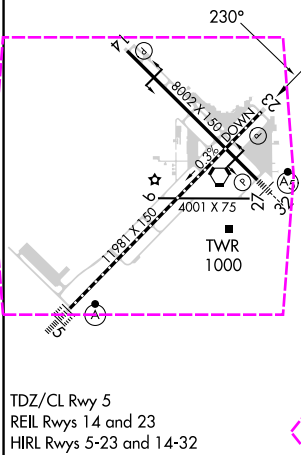
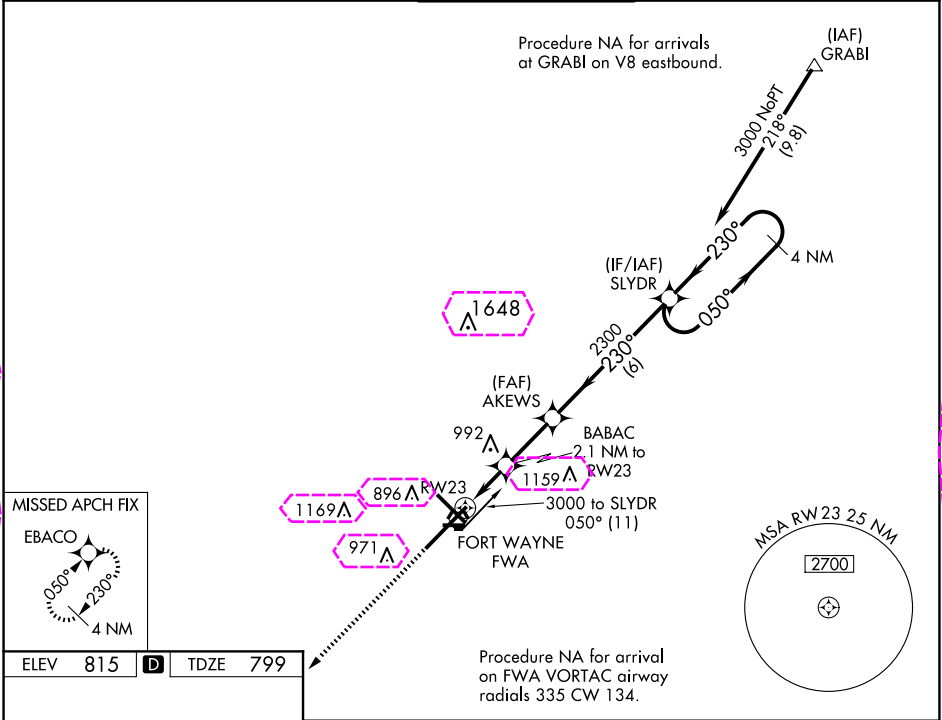
24249


WAAS CH <b>69599</b> <b>W23A</b>	APP CRS <b>230°</b>	Rwy Idg TDZE Apt Elev	<b>11981</b> <b>799</b> <b>815</b>
--	------------------------	-----------------------------	--

# RNAV (GPS) RWY 23

FORT WAYNE INTL (FWA)

 ASR	For uncompensated Baro-VNAV systems, LNAV/VNAV NA below -16°C (4°F) or above 47°C (116°F). DME/DME RNP-0.3 NA.			MISSED APPROACH: Climb to 3000 direct EBACO and hold.	
ATIS <b>121.25 360.825</b>	FORT WAYNE APP CON <b>127.2 284.6</b>	FORT WAYNE TOWER <b>119.1 269.325</b>		GND CON <b>121.9 348.6</b>	CLNC DEL <b>124.75</b>



3000 EBACO		VGSI and RNAV glidepath not coincident (VGSI Angle 3.00/TCH 76).			
*LNAV only.		BABAC 2.1 NM to RW23	AKEWS 2300	SLYDR 3000	4 NM Holding Pattern
*1.3 NM to RW23		*1520	2300	050°	GP 3.00° TCH 55
1.3		0.8	2.4 NM	6 NM	
CATEGORY	A	B	C	D	E
LPV DA	1053/40 254 (300-¾)				
LNAV/VNAV DA	1230-1⅜ 431 (500-1⅝)				
LNAV MDA	1300/55 501 (500-1)		1300-1⅜ 501 (500-1⅝)		
 CIRCLING	1300-1 485 (500-1)		1420-1¾ 605 (700-1¾)	1520-2¼ 705 (800-2¼)	1520-2½ 705 (800-2½)

FORT WAYNE, INDIANA  
Amdt 2A 27APR17

40°59'N-85°12'W

# RNAV (GPS) RWY 23

FORT WAYNE, INDIANA


AL-156 (FAA)

25219

WAAS CH <b>69599</b> <b>W23A</b>	APP CRS <b>230°</b>	Rwy Ldg TDZE Apt Elev	<b>11981</b> <b>799</b> <b>815</b>
--	------------------------	-----------------------------	--

# RNAV (GPS) RWY 23

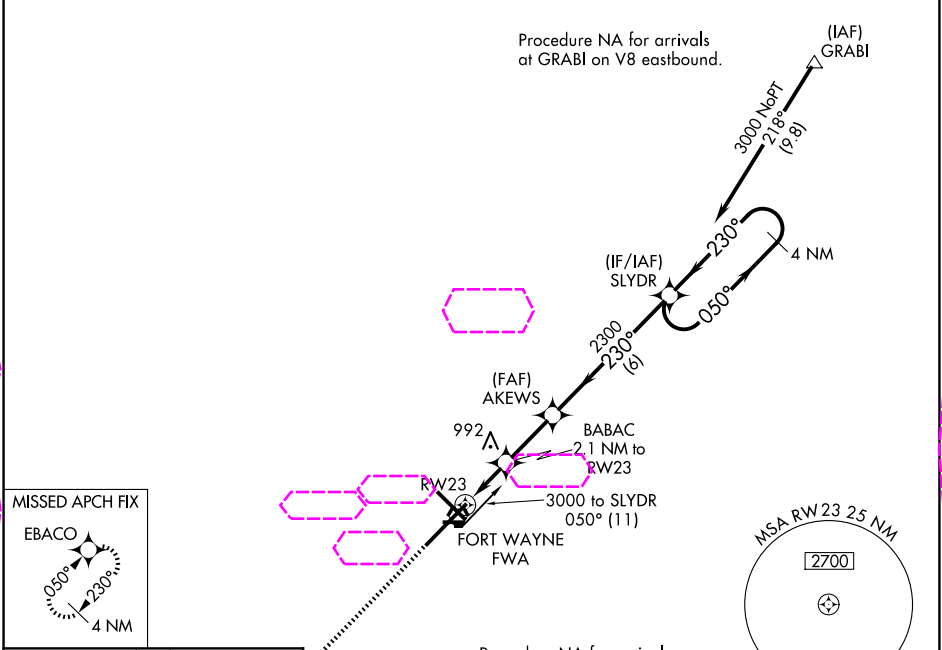
FORT WAYNE INTL (FWA)



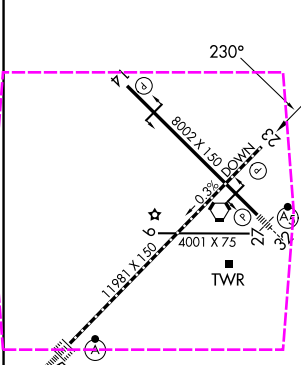
For uncompensated Baro-VNAV systems, LNAV/VNAV NA below -16°C (4°F) or above 47°C (116°F). DME/DME RNP-0.3 NA.

MISSED APPROACH: Climb to 3000 direct EBACO and hold.

ATIS <b>121.25 360.825</b>	FORT WAYNE APP CON <b>127.2 284.6</b>	FORT WAYNE TOWER <b>119.1 269.325</b>	GND CON <b>121.9 348.6</b>	CLNC DEL <b>124.75</b>
-------------------------------	--	--	-------------------------------	---------------------------



ELEV <b>815</b>	<b>D</b>	TDZE <b>799</b>
-----------------	----------	-----------------



TDZ/CL Rwy 5  
REIL Rwy 14 and 23  
HIRL Rwy 5-23 and 14-32

3000 EBACO

VGSI and RNAV glidepath not coincident (VGSI Angle 3.00/TCH 76).

BABAC 2.1 NM to RWY23

AKEWS 2300

SLYDR 2300

4 NM Holding Pattern

\*LNAV only.

\*1.3 NM to RWY23

\*1520

GP 3.00° TCH 55

CATEGORY	A	B	C	D	E
LPV DA	1053/40 254 (300-¾)				
LNAV/VNAV DA	1230-1⅜ 431 (500-1⅝)				
LNAV MDA	1300/55 501 (500-1)		1300-1⅜ 501 (500-1⅝)		
<b>CIRCLING</b>	1300-1 485 (500-1)		1420-1¾ 605 (700-1¾)	1520-2¼ 705 (800-2¼)	1520-2½ 705 (800-2½)

FORT WAYNE, INDIANA  
Amdt 2A 27APR17

40°59'N-85°12'W

# RNAV (GPS) RWY 23

EC-2, 07 AUG 2025 to 04 SEP 2025

EC-2, 07 AUG 2025 to 04 SEP 2025