

FORT WAYNE, INDIANA


AL-156 (FAA)

24249

WAAS CH <b>86417</b> <b>W14A</b>	APP CRS <b>141°</b>	Rwy Idg TDZE <b>802</b> Apt Elev <b>815</b>
--	------------------------	---

# RNAV (GPS) RWY 14

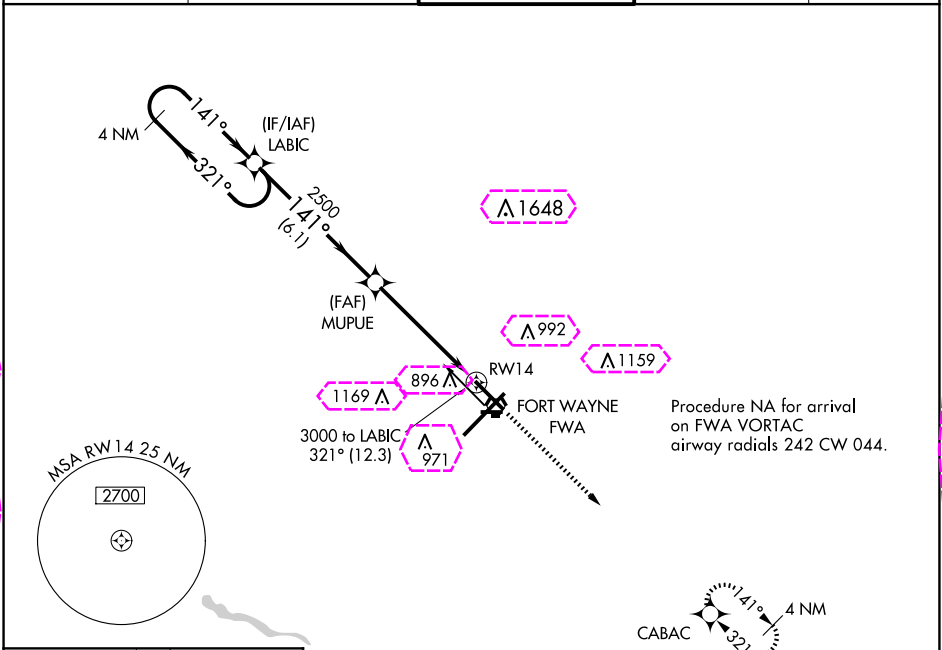
FORT WAYNE INTL (FWA)



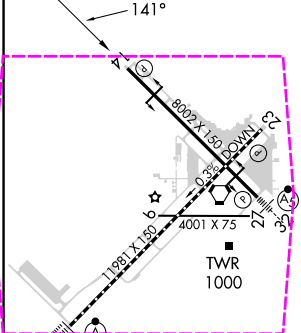
For uncompensated Baro-VNAV systems, LNAV/VNAV NA below -16°C (4°F) or above 47°C (116°F). DME/DME RNP-0.3 NA.

MISSED APPROACH: Climb to 3000 direct CABAC and hold.

ATIS <b>121.25 360.825</b>	FORT WAYNE APP CON <b>127.2 284.6</b>	FORT WAYNE TOWER <b>119.1 269.325</b>	GND CON <b>121.9 348.6</b>	CLNC DEL <b>124.75</b>
-------------------------------	--	--	-------------------------------	---------------------------

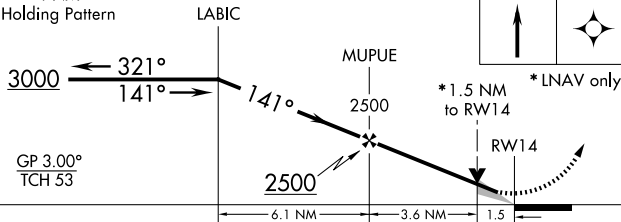


ELEV <b>815</b>	<b>D</b>	TDZE <b>802</b>
-----------------	----------	-----------------



TDZ/CL Rwy 5  
REIL Rws 14 and 23  
HIRL Rws 5-23 and 14-32

4 NM Holding Pattern



GP 3.00° TCH 53

CATEGORY	A	B	C	D
LPV DA		1002-3/4	200 (200-3/4)	
LNAV/VNAV DA		1199-1 1/4	397 (400-1 1/4)	
LNAV MDA	1320-1	518 (600-1)	1320-1 3/8	518 (600-1 3/8)
<b>CIRCLING</b>	1320-1	505 (600-1)	1420-1 3/4 605 (700-1 3/4)	1520-2 1/4 705 (800-2 1/4)

FORT WAYNE, INDIANA  
Amdt 1A 27APR17

40°59'N-85°12'W

# RNAV (GPS) RWY 14

FORT WAYNE, INDIANA


AL-156 (FAA)

25219

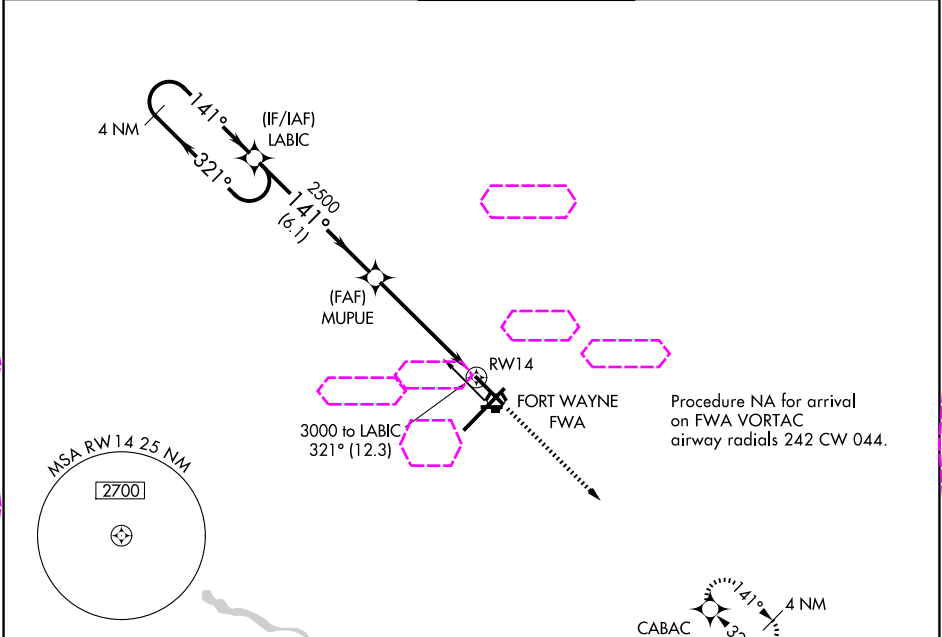
WAAS CH <b>86417</b> <b>W14A</b>	APP CRS <b>141°</b>	Rwy Ldg TDZE <b>802</b> Apt Elev <b>815</b>
--	------------------------	---

# RNAV (GPS) RWY 14

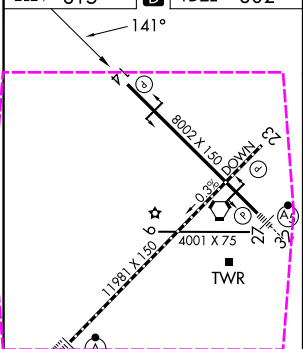
FORT WAYNE INTL (FWA)

 ASR	For uncompensated Baro-VNAV systems, LNAV/VNAV NA below -16°C (4°F) or above 47°C (116°F). DME/DME RNP-0.3 NA.	MISSED APPROACH: Climb to 3000 direct CABAC and hold.
--	--	---

ATIS <b>121.25 360.825</b>	FORT WAYNE APP CON <b>127.2 284.6</b>	FORT WAYNE TOWER <b>119.1 269.325</b>	GND CON <b>121.9 348.6</b>	CLNC DEL <b>124.75</b>
-------------------------------	--	--	-------------------------------	---------------------------



ELEV <b>815</b>	<b>D</b>	TDZE <b>802</b>
-----------------	----------	-----------------



TDZ/CL Rwy 5 REIL Rws 14 and 23 HIRL Rws 5-23 and 14-32
---

4 NM Holding Pattern		LABIC	MUPUE	3000	CABAC
3000		321°	141°	2500	
GP 3.00° TCH 53					
		6.1 NM	3.6 NM	1.5 NM	
CATEGORY	A	B	C	D	
LPV DA		1002-3/4	200 (200-3/4)		
LNAV/VNAV DA		1199-1 1/4	397 (400-1 1/4)		
LNAV MDA	1320-1	518 (600-1)	1320-1 3/8	518 (600-1 3/8)	
CIRCLING	1320-1	505 (600-1)	1420-1 3/4 605 (700-1 3/4)	1520-2 1/4 705 (800-2 1/4)	

FORT WAYNE, INDIANA  
Amdt 1A 27APR17

40°59'N-85°12'W

# RNAV (GPS) RWY 14

EC-2, 07 AUG 2025 to 04 SEP 2025

EC-2, 07 AUG 2025 to 04 SEP 2025