

REC-2, 10 JUL 2025 to 07 AUG 2025

FORT WAYNE, INDIANA

AL-156 (FAA)

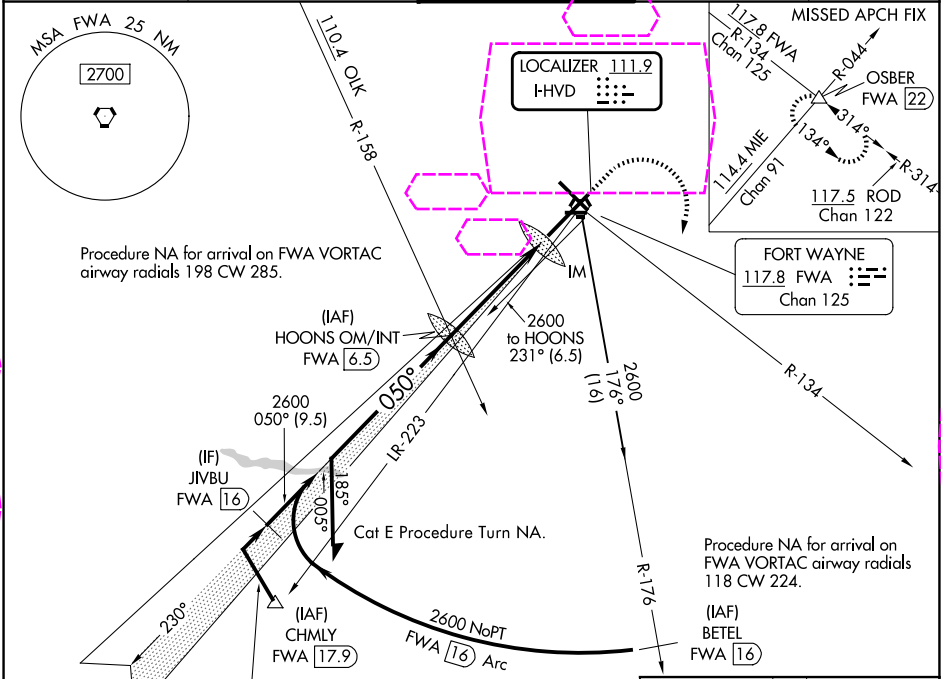
25219

LOC I-HVD <b>111.9</b>	APP CRS <b>050°</b>	Rwy Ldg <b>11981</b> TDZE <b>815</b> Apt Elev <b>815</b>
---------------------------	------------------------	--

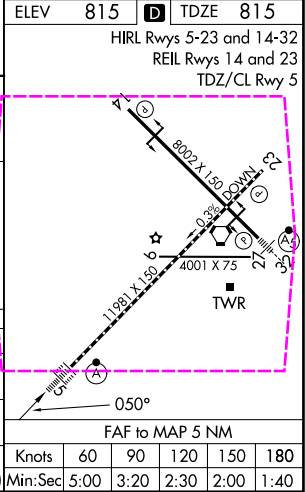
ILS or LOC RWY 5  
FORT WAYNE INTL (FWA)

<b>⚠</b> For inop ALS, increase S-ILS 5 Cat E visibility to RVR 4000 and S-LOC 5 Cats C, D, and E visibility to 1½ SM.	ALS-F-2 <b>A</b>	MISSED APPROACH: Climb to 3000 then climbing right turn to 3000 on FWA R-134 to OSBER INT/FWA 22 DME and hold.
--	---------------------	--

ATIS <b>121.25 360.825</b>	FORT WAYNE APP CON <b>127.2 284.6</b>	FORT WAYNE TOWER <b>119.1 269.325</b>	GND CON <b>121.9 348.6</b>	CLNC DEL <b>124.75</b>
-------------------------------	--	--	-------------------------------	---------------------------



2600 NoPT to JVBVU 334° hdg (2.2) and LOC (1.3)		ELEV 815 <b>D</b> TDZE 815				
Remain within 10 NM		HIRL Rwy 5-23 and 14-32 REIL Rwy 14 and 23 TDZ/CL Rwy 5				
HOONS OM/INT FWA 6.5		OSBER △				
230° 2600 050° 2600 GS 3.00° TCH 55		1300 3000 FWA 2.7 R-134 FWA 1.5 IM				
3.8 NM 1.1 0.1						
CATEGORY	A	B	C	D	E	
S-ILS 5	1015/18 200 (200-½)					
S-LOC 5	1300/24	485 (500-½)	1300/50 485 (500-1)			
CIRCLING	1300-1	485 (500-1)	1420-1¾ 605 (700-1¾)	1520-2¼ 705 (800-2¼)	1520-2½ 705 (800-2½)	
Knots		60	90	120	150	180
Min:Sec		5:00	3:20	2:30	2:00	1:40



FORT WAYNE, INDIANA  
Amdt 15C 12JUN25

40°59'N-85°12'W

FORT WAYNE INTL (FWA)  
ILS or LOC RWY 5

EC-2, 07 AUG 2025 to 04 SEP 2025

EC-2, 07 AUG 2025 to 04 SEP 2025