

FORT WAYNE, INDIANA

AL-156 (FAA)

25163

LOC/DME I-FWA 109.9 Chan 36	APP CRS 321°	Rwy Ldg TDZE Apt Elev 8001 800 815
---	------------------------	--

ILS or LOC RWY 32

FORT WAYNE INTL (FWA)

DME required for LOC only. DME or RADAR required for procedure entry.

⚠

For inop ALS, increase S-ILS 32 visibility Cat E to RVR 4000 and increase S-LOC 32 visibility Cats C, D, and E to RVR 5500.

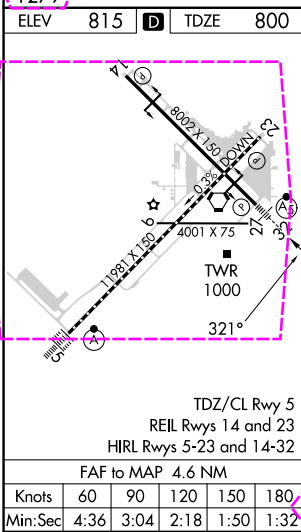
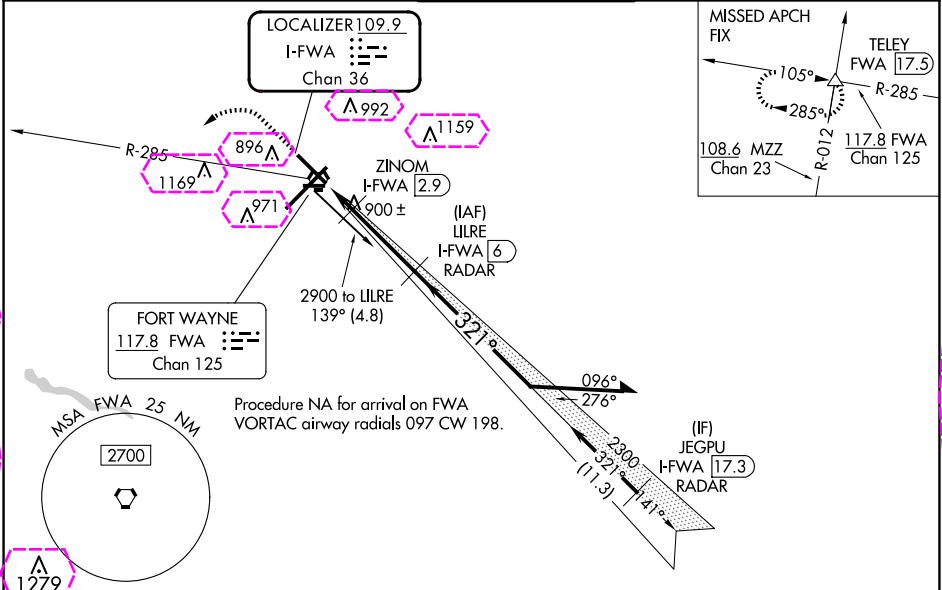
ASR

* RVR 1800 authorized with use of FD or AP or HUD to DA.

MALSR

MISSED APPROACH: Climb to 3000 then left turn on FWA VORTAC R-285 to TELEY INT/FWA 17.5 DME and hold.

ATIS 121.25 360.825	FORT WAYNE APP CON 127.2 284.6	FORT WAYNE TOWER 119.1 269.325	GND CON 121.9 348.6	CLNC DEL 124.75
-------------------------------	--	--	-------------------------------	---------------------------



Cat E Procedure Turn NA.					
<div><div><div>3000</div><div>FWA R-285</div><div>TELEY △</div></div><div><div>Use I-FWA DME when on the localizer course.</div><div><div><div><div><div>LILRE I-FWA RADAR</div><div>6</div></div><div><div>2300</div><div>141°</div><div>321°</div><div>2500</div></div><div><div>2300</div><div>GS 3.00° TCH 56</div></div></div><div><div><div>ZINOM I-FWA 2.9</div><div>1280</div></div><div><div>I-FWA 1.5</div><div>1.4 NM</div><div>3.2 NM</div></div></div><div><div>Remain within 10 NM</div><div>VGSI and ILS glidepath not coincident (VGSI Angle 3.00/TCH 76).</div></div></div></div></div></div>					
CATEGORY	A	B	C	D	E
S-ILS 32*	1000/24 200 (200-½)				
S-LOC 32	1160/24	360 (400-½)	1160/30	360 (400-¾)	
<div>CIRCLING</div>	1300-1	485 (500-1)	1420-1¾ 605 (700-1¼)	1520-2¼ 705 (800-2¼)	1520-2½ 705 (800-2½)

FORT WAYNE, INDIANA

AL-156 (FAA)

25219

LOC/DME I-FWA 109.9 Chan 36	APP CRS 321°	Rwy Ldg TDZE Apt Elev 8001 800 815
---	------------------------	--

ILS or LOC RWY 32

FORT WAYNE INTL (FWA)

DME required for LOC only. DME or RADAR required for procedure entry.

⚠

For inop ALS, increase S-ILS 32 visibility Cat E to RVR 4000 and increase S-LOC 32 visibility Cats C, D, and E to RVR 5500.

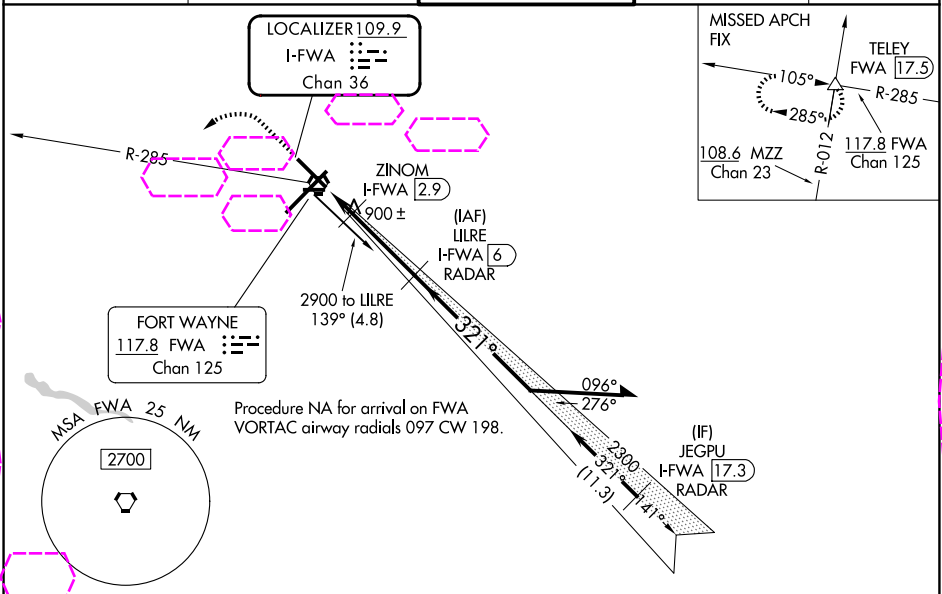
ASR

* RVR 1800 authorized with use of FD or AP or HUD to DA.

MALSR

MISSED APPROACH: Climb to 3000 then left turn on FWA VORTAC R-285 to TELEY INT/FWA 17.5 DME and hold.

ATIS 121.25 360.825	FORT WAYNE APP CON 127.2 284.6	FORT WAYNE TOWER 119.1 269.325	GND CON 121.9 348.6	CLNC DEL 124.75
-------------------------------	--	--	-------------------------------	---------------------------



ELEV 815 **D** TDZE 800

TDZ/CL Rwy 5
REIL Rwy 14 and 23
HIRL Rwy 5-23 and 14-32

FAF to MAP 4.6 NM

Knots	60	90	120	150	180
Min:Sec	4:36	3:04	2:18	1:50	1:32

Cat E Procedure Turn NA.

3000

FWA R-285

TELEY

Use I-FWA DME when on the localizer course.

LILRE I-FWA 6 RADAR

ZINOM I-FWA 2.9

I-FWA 1.5

1280

2300

2300

141°

321°

2500

GS 3.00° TCH 56

CATEGORY	A	B	C	D	E
S-ILS 32*	1000/24 200 (200-½)				
S-LOC 32	1160/24 360 (400-½)		1160/30 360 (400-¾)		
CIRCLING	1300-1	485 (500-1)	1420-1¾ 605 (700-1¾)	1520-2¼ 705 (800-2¼)	1520-2½ 705 (800-2½)

EC-2, 07 AUG 2025 to 04 SEP 2025

EC-2, 07 AUG 2025 to 04 SEP 2025