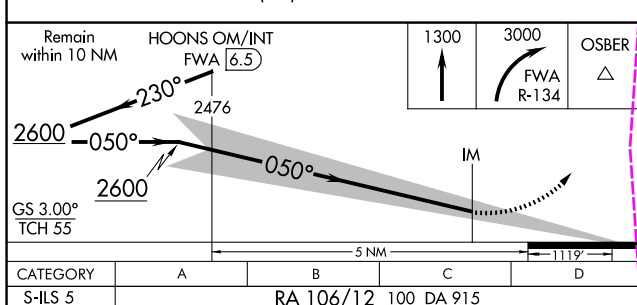
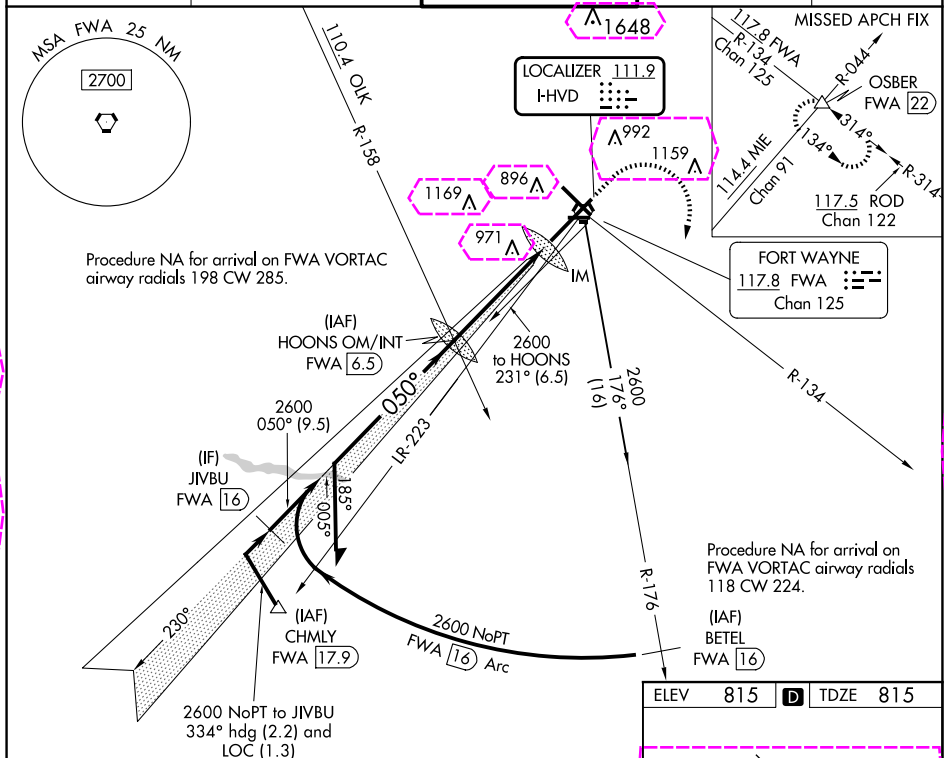


LOC I-HVD <b><u>111.9</u></b>	APP CRS <b>050°</b>	Rwy Ldg <b>11981</b> TDZE <b>815</b> Apt Elev <b>815</b>
----------------------------------	------------------------	--

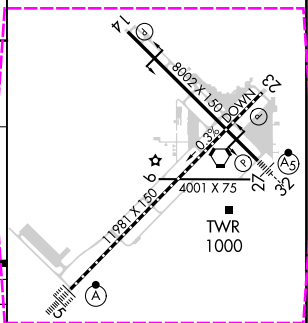
# ILS RWY 5 (CAT II) FORT WAYNE INTL (FWA)

ASR		<p>ALSF-2</p> <p>MISSED APPROACH: Climb to 1300 then climbing right turn to 3000 on FWA R-134 to OSBER INT/FWA 22 DME and hold.</p>
-----	---	---

ATIS <b>121.25 360.825</b>	FORT WAYNE APP CON <b>127.2 284.6</b>	FORT WAYNE TOWER <b>119.1 269.325</b>	GND CON <b>121.9 348.6</b>	CLNC DEL <b>124.75</b>
-------------------------------	--	--	-------------------------------	---------------------------



CATEGORY II ILS - SPECIAL AIRCREW  
& AIRCRAFT CERTIFICATION REQUIRED



TDZ/CL Rwy 5  
REIL Rwy 14 and 23  
HIRL Rwy 5-23 and 14-32

FORT WAYNE, INDIANA

AL-156 (FAA)

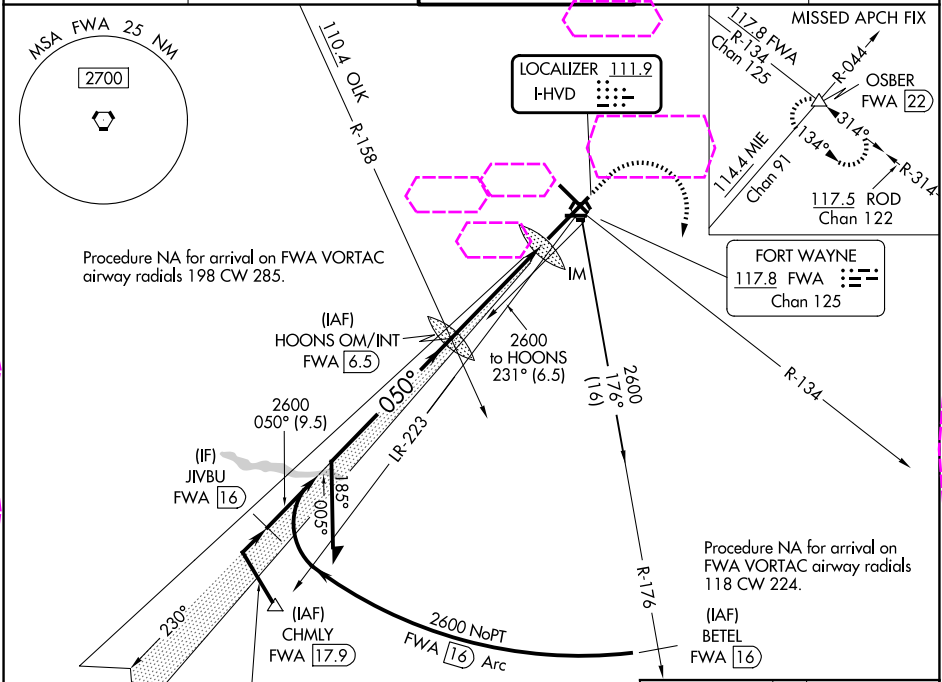
25219

LOC I-HVD <b>111.9</b>	APP CRS <b>050°</b>	Rwy Ldg <b>11981</b> TDZE <b>815</b> Apt Elev <b>815</b>
---------------------------	------------------------	--

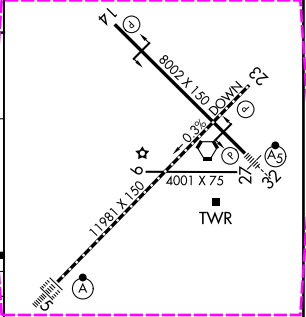
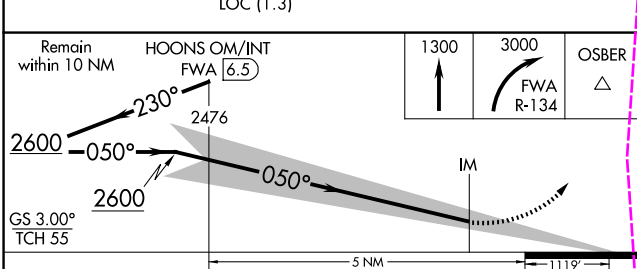
ILS RWY 5 (CAT II)  
FORT WAYNE INTL (FWA)

ASR	ALSF-2	MISSED APPROACH: Climb to 3000 then climbing right turn to 3000 on FWA R-134 to OSBER INT/FWA 22 DME and hold.
-----	--------	--

ATIS <b>121.25 360.825</b>	FORT WAYNE APP CON <b>127.2 284.6</b>	FORT WAYNE TOWER <b>119.1 269.325</b>	GND CON <b>121.9 348.6</b>	CLNC DEL <b>124.75</b>
-------------------------------	--	--	-------------------------------	---------------------------



ELEV	815	TDZE	815
------	-----	------	-----



CATEGORY	A	B	C	D
S-ILS 5	RA 106/12 100 DA 915			

CATEGORY II ILS - SPECIAL AIRCREW  
& AIRCRAFT CERTIFICATION REQUIRED

TDZ/CL Rwy 5  
REIL Rwy 14 and 23  
HIRL Rwy 5-23 and 14-32

FORT WAYNE, INDIANA  
Amdt 15C 12JUN25

40°59'N-85°12'W

FORT WAYNE INTL (FWA)  
ILS RWY 5 (CAT II)

EC-2, 07 AUG 2025 to 04 SEP 2025

EC-2, 07 AUG 2025 to 04 SEP 2025