

(HAR.HAR5) 23278

AL-150 (FAA)

MC GUIRE FIELD

(JOINT BASE MC GUIRE DIX LAKEHURST) (WRI)

WRIGHTSTOWN, NEW JERSEY

## HARRISBURG FIVE ARRIVAL

D-ATIS

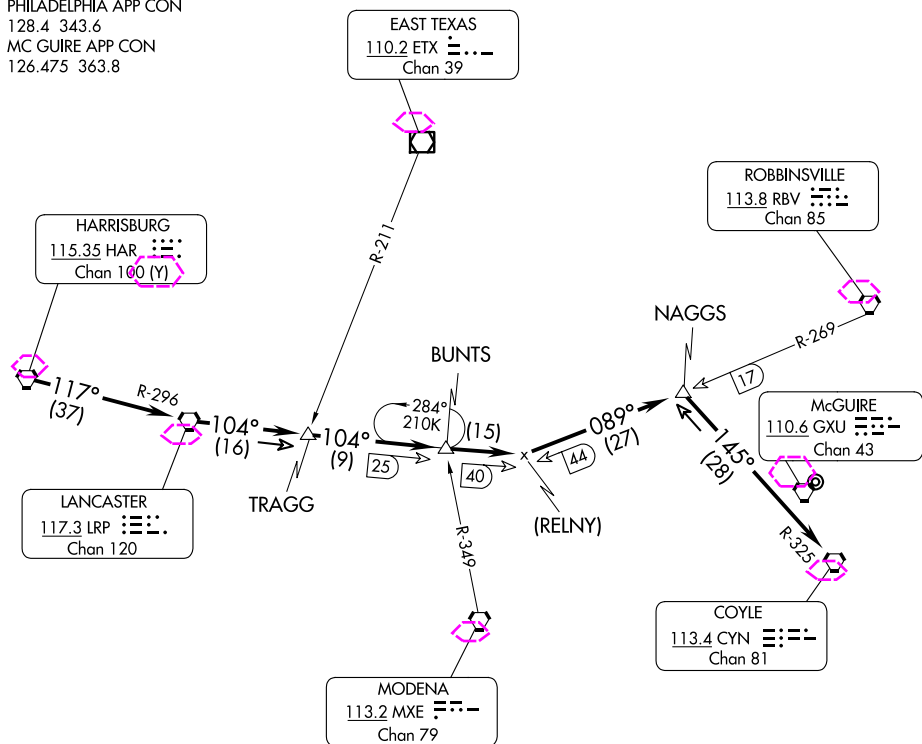
110.6 270.1

PHILADELPHIA APP CON

128.4 343.6

MC GUIRE APP CON

126.475 363.8



NOTE: Route depicted beyond Naggs Int is for lost communications or radar outage only.

NOTE: Not for use by fighter type aircraft.

NOTE: Descent below 3500 prior to NAGGS may transition below the KPHL class Bravo Airspace.

NOTE: Chart not to scale

## ARRIVAL ROUTE DESCRIPTION

From over HAR VORTAC via HAR R-117 and LRP R-296 to LRP VORTAC. Thence via LRP R-104 to LRP R-104/40 DME and RBV R-269/44 DME. Thence via RBV R-269 to NAGGS INT. Thence via CYN R-325 to CYN VORTAC. Expect radar vector to final approach 8 DME west of GXU VORTAC. Expect descent below 10000 after HAR VORTAC.

HARRISBURG FIVE ARRIVAL

(HAR.HAR5) 22MAY97

MC GUIRE FIELD

(JOINT BASE MC GUIRE DIX LAKEHURST) (WRI)

WRIGHTSTOWN, NEW JERSEY

NE-2, 10 JUL 2025 to 07 AUG 2025

NE-2, 10 JUL 2025 to 07 AUG 2025

(HAR.HAR5) 25219

AL-150 (FAA)

MC GUIRE FIELD

(JOINT BASE MC GUIRE DIX LAKEHURST) (KWR.I)

WRIGHTSTOWN, NEW JERSEY

## HARRISBURG FIVE ARRIVAL

D-ATIS

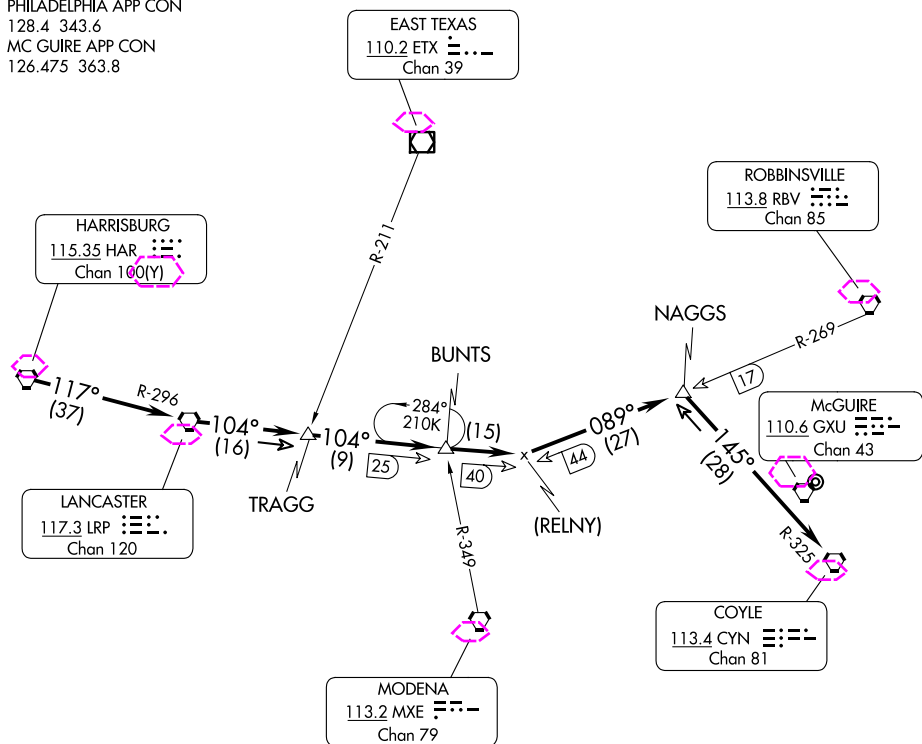
110.6 270.1

PHILADELPHIA APP CON

128.4 343.6

MC GUIRE APP CON

126.475 363.8



NOTE: Route depicted beyond Naggs Int is for lost communications or radar outage only.

NOTE: Not for use by fighter type aircraft.

NOTE: Descent below 3500 prior to NAGGS may transition below the KPHL class Bravo Airspace.

NOTE: Chart not to scale

## ARRIVAL ROUTE DESCRIPTION

From over HAR VORTAC via HAR R-117 and LRP R-296 to LRP VORTAC. Thence via LRP R-104 to LRP R-104/40 DME and RBV R-269/44 DME. Thence via RBV R-269 to NAGGS INT. Thence via CYN R-325 to CYN VORTAC. Expect radar vector to final approach 8 DME west of GXU VORTAC. Expect descent below 10000 after HAR VORTAC.

HARRISBURG FIVE ARRIVAL

(HAR.HAR5) 22MAY97

MC GUIRE FIELD

(JOINT BASE MC GUIRE DIX LAKEHURST) (KWR.I)

WRIGHTSTOWN, NEW JERSEY

NE-2, 07 AUG 2025 to 04 SEP 2025

NE-2, 07 AUG 2025 to 04 SEP 2025