

EVERETT, WASHINGTON


AL-142 (FAA)

25051

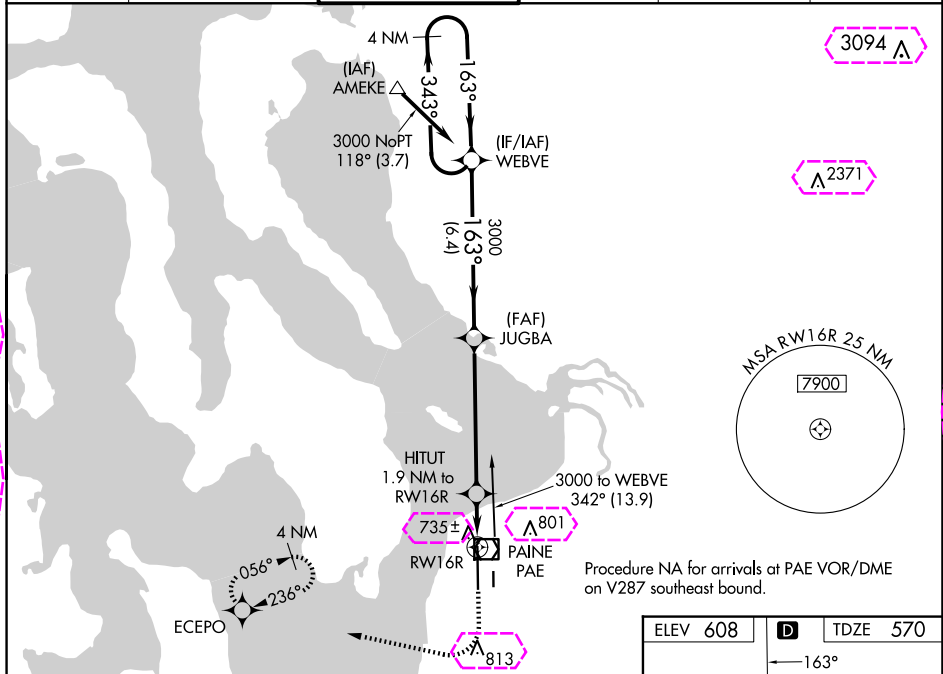
WAAS CH 61129 W16A	APP CRS 163°	Rwy Idg 9010 TDZE 570 Apt Elev 608
--	------------------------	---

RNAV (GPS) Z RWY 16R

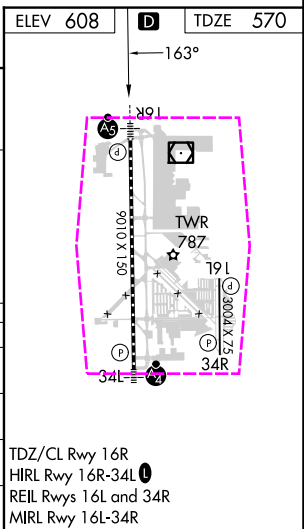
SEATTLE PAINE FLD INTL (P.A.E)

▼ For uncompensated Baro-VNAV systems, LNAV/VNAV NA below -5°C (23°F) or above 54°C (130°F). Circling Rwy 34R NA at night. DME/DME RNP-0.3 NA.	MALSR 	MISSED APPROACH: (Do not exceed 240K until ECEPO) Climb to 1100 then climbing right turn to 3000 direct ECEPO and hold, continue climb-in-hold to 3000.
---	--	---

ATIS 128.65	SEATTLE APP CON 128.5 306.9	PAINE TOWER ★ 132.95 (CTAF) 0 256.7	GND CON 121.8 339.8	CLNC DEL 127.175	UNICOM 122.95
-----------------------	---------------------------------------	---	-------------------------------	----------------------------	-------------------------



VGSI and RNAV glidepath not coincident (VGSI Angle 3.00/TCH 74).				
4 NM Holding Pattern				
3000 ← 343° 163° → 3000				
GP 3.00° TCH 57				
6.4 NM 5.6 NM 0.8 NM 1.1 NM				
CATEGORY	A	B	C	D
LPV DA	770/18 200 (200-½)			
LNAV/VNAV DA	913/30 343 (400-⅝)			
LNAV MDA	1000/24 430 (400-½)	1000/40 430 (400-¾)		
CIRCLING	1100-1 492 (500-1)	1120-1½ 512 (600-½)	1160-2 552 (600-2)	



EVERETT, WASHINGTON
Amdt 1 07DEC17

47°54'N-122°17'W

SEATTLE PAINE FLD INTL (P.A.E)
RNAV (GPS) Z RWY 16R

RNAV (GPS) Z RWY 16R
SEATTLE PAINE FLD INTL (PAE)

WAAS CH 61129 W16A	APP CRS 163°	Rwy Ldg TDZE Apt Elev	9010 570 608
--	------------------------	-----------------------------	---

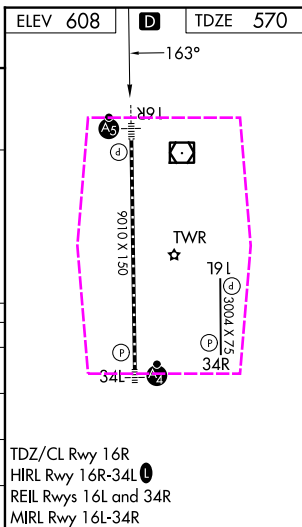
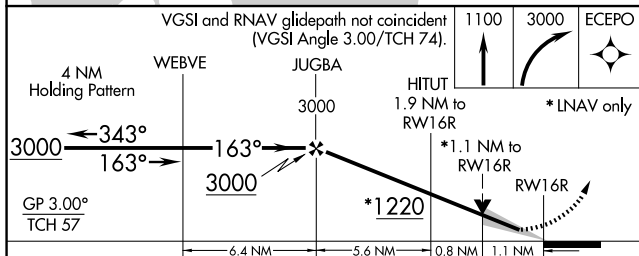
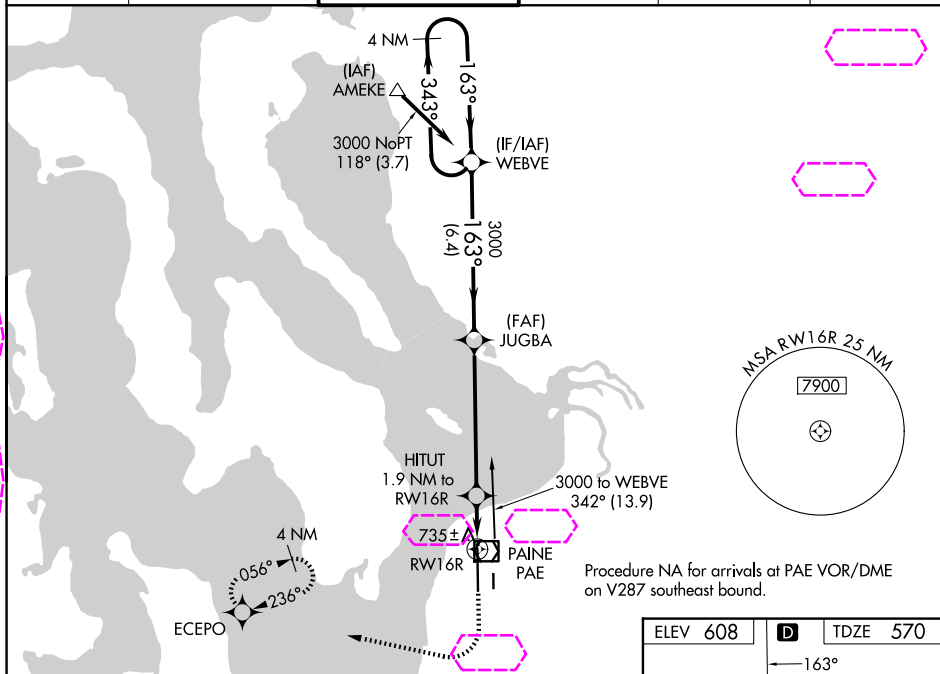
For uncompensated Baro-VNAV systems, LNAV/VNAV NA below -5°C (23°F) or above 54°C (130°F). Circling Rwy 34R NA at night. DME/DME RNP-0.3 NA.

MALSR



MISSED APPROACH: (Do not exceed 240K until ECEPO) Climb to 1100 then climbing right turn to 3000 direct ECEPO and hold, continue climb-in-hold to 3000.

ATIS	SEATTLE APP CON	PAINÉ TOWER ★	GND CON	CLNC DEL	UNICOM
128.65	128.5 306.9	132.95 (CTAF) 0 256.7	121.8 339.8	127.175	122.95



CATEGORY	A	B	C	D
LPV DA	770/18 200 (200-½)			
LNAV/ VNAV DA	913/30 343 (400-⅝)			
LNAV MDA	1000/24 430 (400-½)		1000/40 430 (400-¾)	
CIRCLING	1100-1 492 (500-1)		1120-1½ 512 (600-1½)	1160-2 552 (600-2)

EVERETT, WASHINGTON

Amdt 1 07DEC17

SEATTLE PAINE FLD INTL (PAE)

47°54'N-122°17'W

RNAV (GPS) Z RWY 16R