

EVERETT, WASHINGTON

AL-142 (FAA)


25051

WAAS CH 60911 W16B	APP CRS 163°	Rwy Idg 9010 TDZE 570 Apt Elev 608
--	------------------------	---

RNAV (GPS) Y RWY 16R

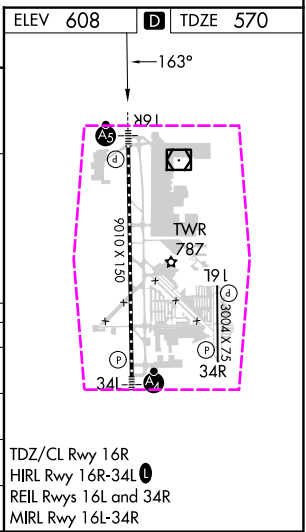
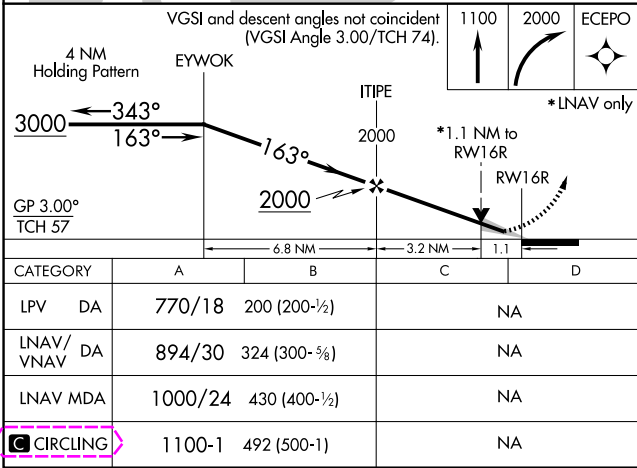
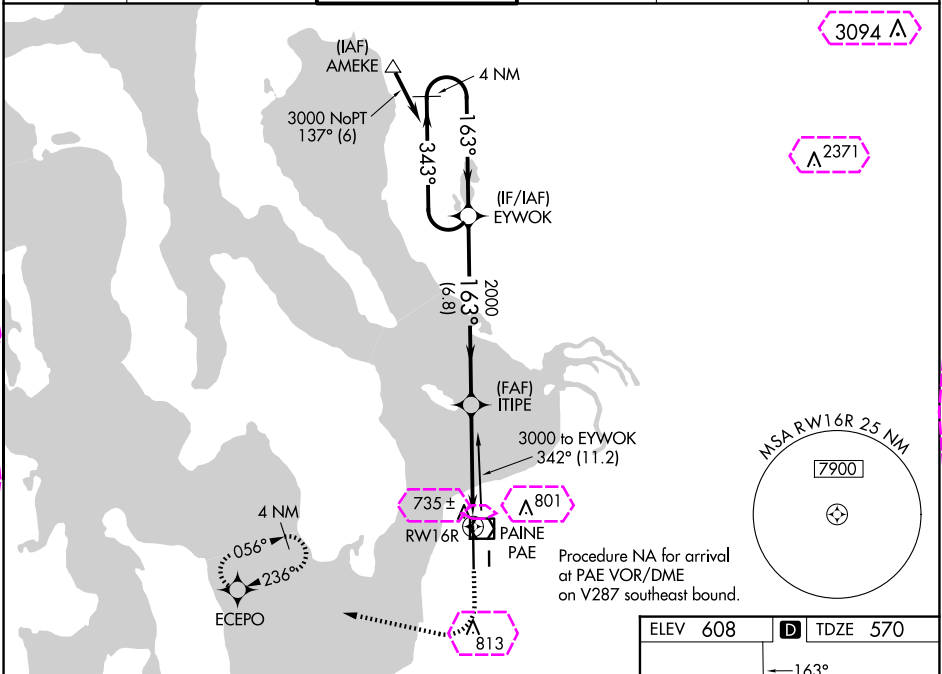
SEATTLE PAINE FLD INTL (P.A.E.)

⚠ For uncompensated Baro-VNAV systems, LNAV/VNAV NA below -5°C (23°F) or above 54°C (130°F). Circling Rwy 34R NA at night. DME/DME RNP-0.3 NA. For inop ALS, increase LNAV/VNAV Cats A/B visibility to RVR 5000.

MALSR 

MISSED APPROACH: Climb to 1100 then climbing right turn to 2000 direct ECEPO and hold.

ATIS 128.65	SEATTLE APP CON 128.5 306.9	PAINE TOWER ★ 132.95 (CTAF) 0 256.7	GND CON 121.8 339.8	CLNC DEL 127.175	UNICOM 122.95
-----------------------	---------------------------------------	---	-------------------------------	----------------------------	-------------------------



EVERETT, WASHINGTON
Amdt 2 07DEC17

47°54'N-122°17'W

SEATTLE PAINE FLD INTL (P.A.E.)
RNAV (GPS) Y RWY 16R

NW-1, 10 JUL 2025 to 07 AUG 2025

NW-1, 10 JUL 2025 to 07 AUG 2025

EVERETT, WASHINGTON

AL-142 (FAA)


25219

WAAS CH 60911 W16B	APP CRS 163°	Rwy Ldg 9010 TDZE 570 Apt Elev 608
--	------------------------	---

RNAV (GPS) Y RWY 16R

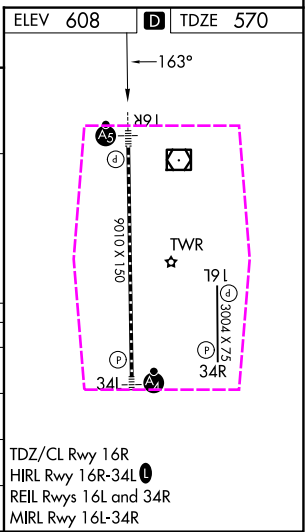
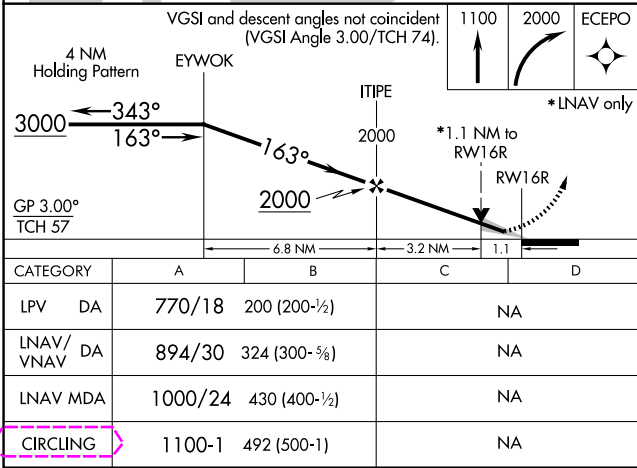
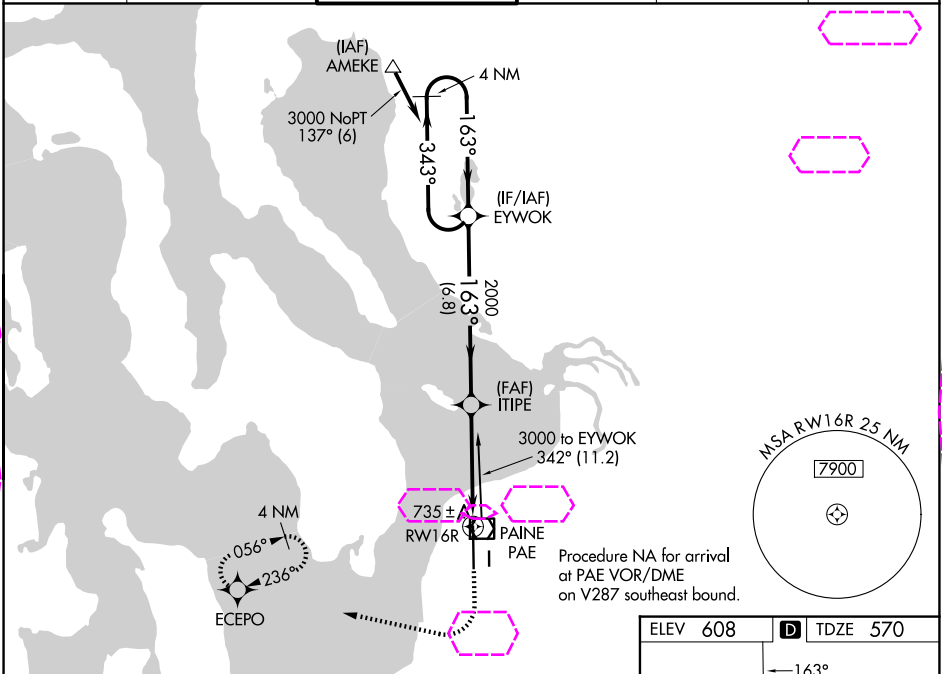
SEATTLE PAINE FLD INTL (P.A.E.)

▼ For uncompensated Baro-VNAV systems, LNAV/VNAV NA below -5°C (23°F) or above 54°C (130°F). Circling Rwy 34R NA at night. DME/DME RNP-0.3 NA. For inop ALS, increase LNAV/VNAV Cats A/B visibility to RVR 5000.

MALSR 

MISSED APPROACH: Climb to 1100 then climbing right turn to 2000 direct ECEPO and hold.

ATIS 128.65	SEATTLE APP CON 128.5 306.9	PAINE TOWER ★ 132.95 (CTAF) 0 256.7	GND CON 121.8 339.8	CLNC DEL 127.175	UNICOM 122.95
-----------------------	---------------------------------------	---	-------------------------------	----------------------------	-------------------------



EVERETT, WASHINGTON
Amdt 2 07DEC17

47°54'N-122°17'W

SEATTLE PAINE FLD INTL (P.A.E.)
RNAV (GPS) Y RWY 16R

NW-1, 07 AUG 2025 to 04 SEP 2025

NW-1, 07 AUG 2025 to 04 SEP 2025