

EVERETT, WASHINGTON

AL-142 (FAA)

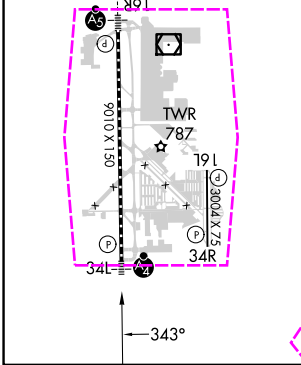
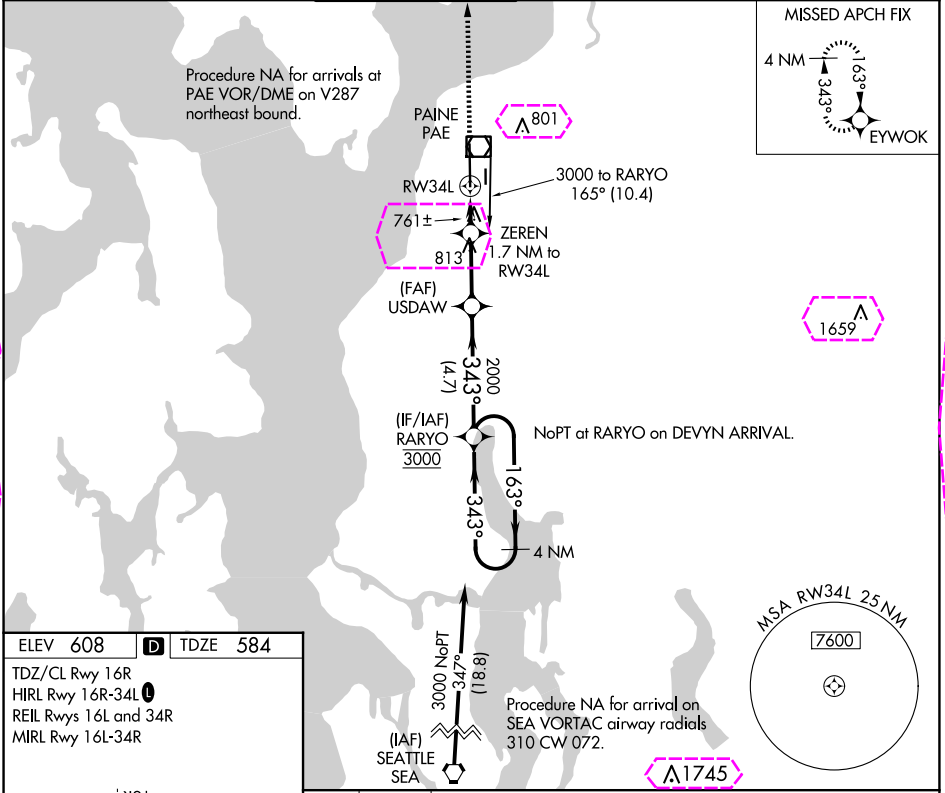
25051



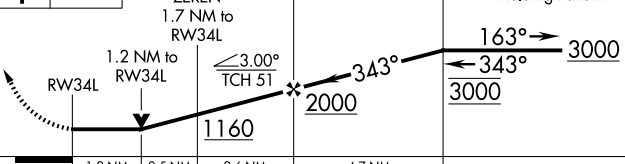

APP CRS	Rwy Idg	9010
343°	TDZE	584
	Apt Elev	608

RNAV (GPS) RWY 34L

SEATTLE PAINE FLD INTL (P.A.E)

Circling Rwy 34R NA at night. Rwy 34L helicopter visibility reduction below ¾ SM NA. DME/DME RNP-0.3 NA.		MALSF 	MISSED APPROACH: Climb to 3000 direct EYWOK and hold.		
ATIS 128.65	SEATTLE APP CON 128.5 306.9	PAINE TOWER ★ 132.95 (CTAF) 0 256.7	GND CON 121.8 339.8	CLNC DEL 127.175	UNICOM 122.95



3000	EYWOK	VGSI and descent angles not coincident (VGSI Angle 3.00/TCH 75).			
		ZEREN 1.7 NM to RW34L	USDW	RARYO	4 NM Holding Pattern
					
→ 1.2 NM → 0.5 NM → 2.6 NM → 4.7 NM →					
CATEGORY	A	B	C	D	
LNAV MDA	1020-¾ 436 (500-¾)		1020-1 436 (500-1)		
 CIRCLING	1100-1 492 (500-1)		1120-1½ 512 (600-1½)		1160-2 552 (600-2)

EVERETT, WASHINGTON

Amtd 3 07DEC17

47°54'N-122°17'W

RNAV (GPS) RWY 34L

SEATTLE PAINE FLD INTL (P.A.E)

NW-1, 10 JUL 2025 to 07 AUG 2025

NW-1, 10 JUL 2025 to 07 AUG 2025

EVERETT, WASHINGTON

AL-142 (FAA)

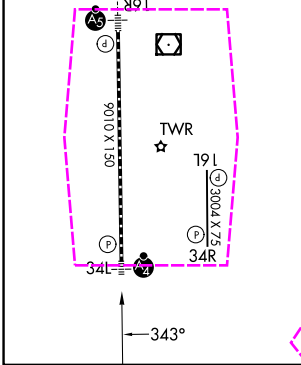
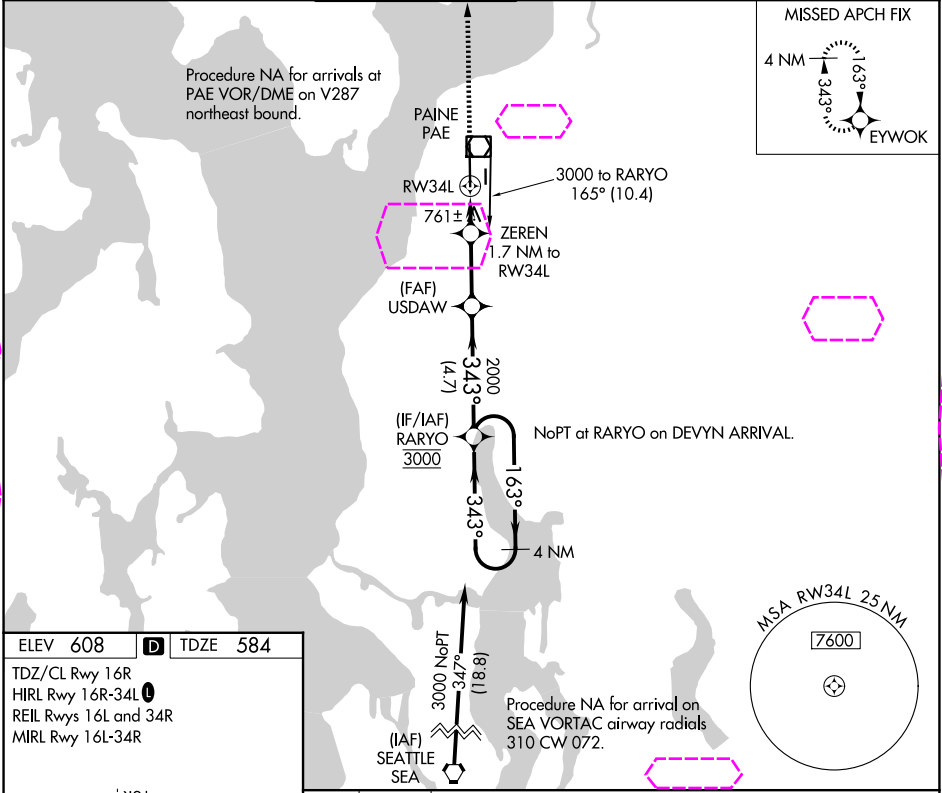
25219

APP CRS	Rwy Ldg	9010
343°	TDZE	584
	Apt Elev	608

RNAV (GPS) RWY 34L

SEATTLE PAINE FLD INTL (P.A.E.)

Circling Rwy 34R NA at night. Rwy 34L helicopter visibility reduction below ¾ SM NA. DME/DME RNP-0.3 NA.		MALSF 	MISSED APPROACH: Climb to 3000 direct EYWOK and hold.		
ATIS 128.65	SEATTLE APP CON 128.5 306.9	PAINE TOWER ★ 132.95 (CTAF) 0 256.7	GND CON 121.8 339.8	CLNC DEL 127.175	UNICOM 122.95



3000	EYWOK	VGSI and descent angles not coincident (VGSI Angle 3.00/TCH 75).	
		ZEREN 1.7 NM to RW34L	USDW
		1.2 NM to RW34L	163° → 3000
		1160	← 343° 3000
		1.2 NM	0.5 NM
		2.6 NM	4.7 NM
CATEGORY	A	B	C
LNAV MDA	1020-¾ 436 (500-¾)	1020-1 436 (500-1)	1020-1 436 (500-1)
CIRCLING	1100-1 492 (500-1)	1120-1½ 512 (600-1½)	1160-2 552 (600-2)

EVERETT, WASHINGTON

Amtd 3 07DEC17

47°54'N-122°17'W

RNAV (GPS) RWY 34L

NW-1, 07 AUG 2025 to 04 SEP 2025