

EVERETT, WASHINGTON

AL-142 (FAA)

25051

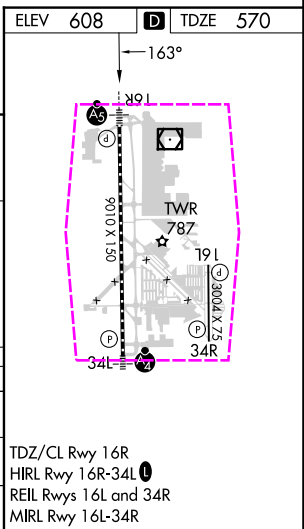
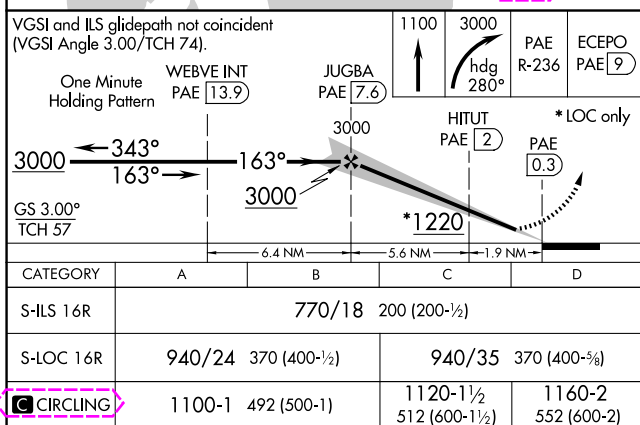
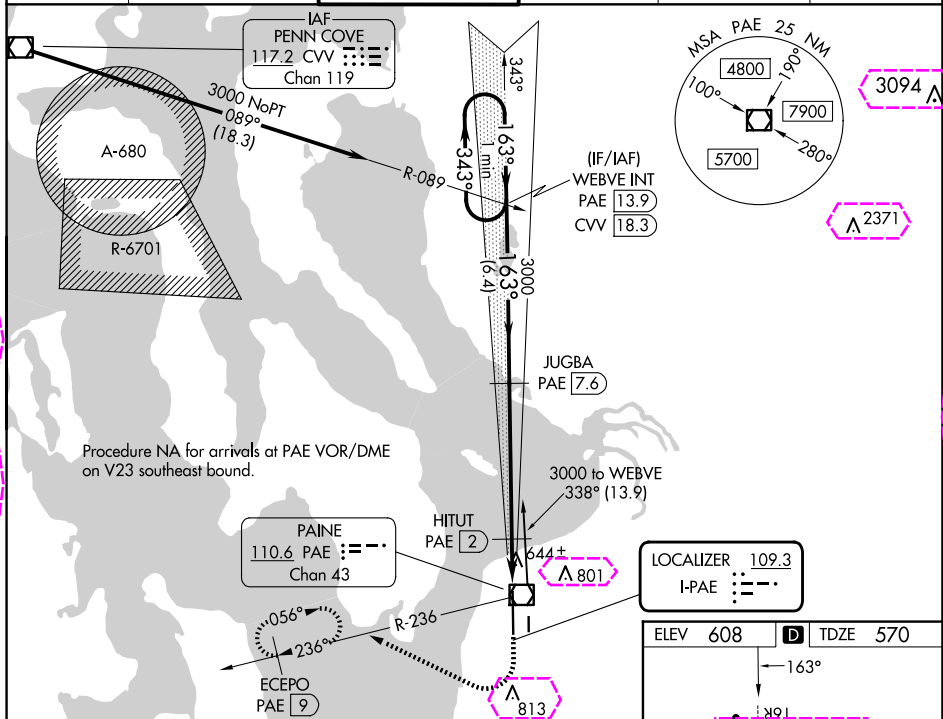
LOC I-PAE 109.3	APP CRS 163°	Rwy Idg TDZE Apt Elev	9010 570 608
---------------------------	------------------------	-----------------------------	---

ILS Z or LOC Z RWY 16R

SEATTLE PAINE FLD INTL (PAE)

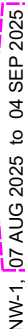
⚠ Circling Rwy 34R NA at night. DME required. For inop ALS, increase S-LOC 16R Cats C/D visibility to RVR 5500. DME from PAE VOR/DME. Simultaneous reception of I-PAE and PAE DME required.	MALSR A5	MISSED APPROACH: Climb to 1100 then climbing right turn to 3000 on heading 280° and PAE VOR/DME R-236 to ECEPO/PAE 9 DME and hold, continue climb-in-hold to 3000.
--	---------------------------	---

ATIS 128.65	SEATTLE APP CON 128.5 306.9	PAINE TOWER ★ 132.95 (CTAF) 0 256.7	GND CON 121.8 339.8	CLNC DEL 127.175	UNICOM 122.95
-----------------------	---------------------------------------	---	-------------------------------	----------------------------	-------------------------



ILS Z or LOC Z RWY 16R
SEATTLE PAINE FLD INTL (PAE)

MALSR

UNICOM
122.95

TDZ/CL Rwy 16R
HIRL Rwy 16R-34L **L**
REIL Rwys 16L and 34R
MIRL Rwy 16L-34R