

EVERETT, WASHINGTON


AL-142 (FAA)

25051

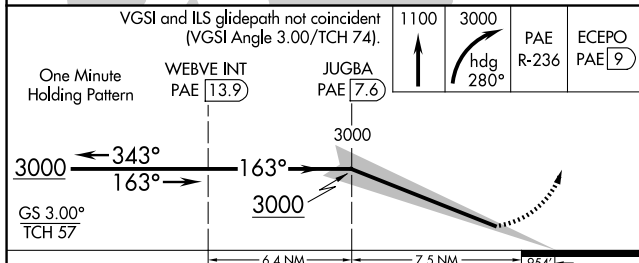
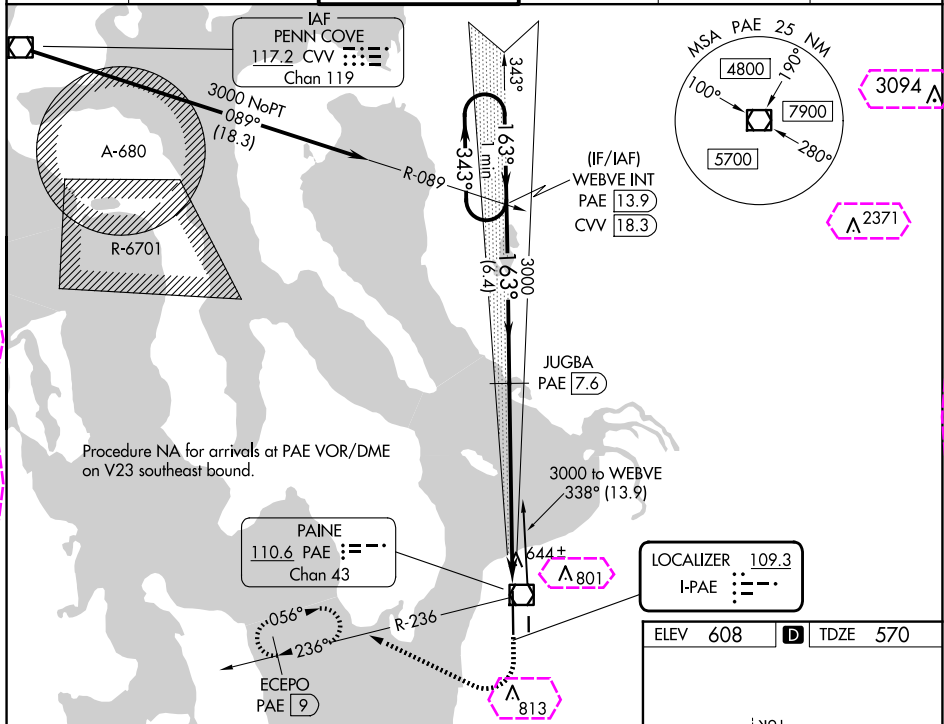
LOC I-PAE 109.3	APP CRS 163°	Rwy Idg TDZE Apt Elev	9010 570 608
---------------------------	------------------------	-----------------------------	---

ILS Z RWY 16R (SA CAT II)

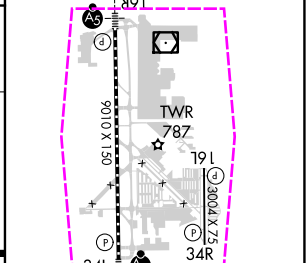
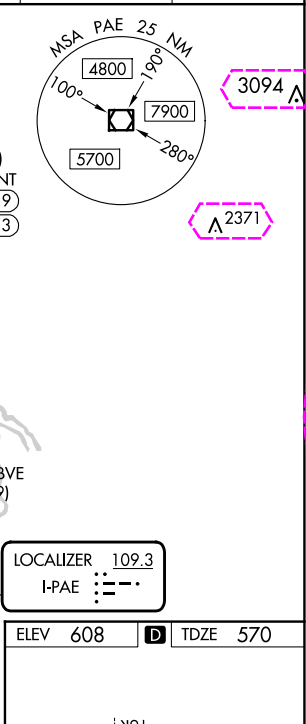
SEATTLE PAINE FLD INTL (PAE)

<p>D DME required. Reduced Lighting: Requires specific OPSPEC, MSPEC, or LOA approval and use of autoland or HUD to touchdown. A DME from PAE VOR/DME. Simultaneous reception of I-PAE and PAE DME required. Procedure NA when control tower closed.</p>	<p>MALS </p>	<p>MISSED APPROACH: Climb to 1100 then climbing right turn to 3000 on heading 280° and PAE VOR/DME R-236 to ECEPO/PAE 9 DME and hold, continue climb-in-hold to 3000.</p>
--	--	--

ATIS 128.65	SEATTLE APP CON 128.5 306.9	PAINE TOWER ★ 132.95 (CTAF) 0 256.7	GND CON 121.8 339.8	CLNC DEL 127.175	UNICOM 122.95
-----------------------	---------------------------------------	---	-------------------------------	----------------------------	-------------------------



CATEGORY	A	B	C	D
S-ILS 16R	RA 116/12 100 DA 670			



TDZ/CL Rwy 16R	HIRL Rwy 16R-34L
REIL Rws 16L and 34R	MIRL Rwy 16L-34R

SA CATEGORY II ILS-SPECIAL AIRCREW & AIRCRAFT CERTIFICATION REQUIRED

EVERETT, WASHINGTON

Amdt 1A 01FEB18

47°54'N-122°17'W

SEATTLE PAINE FLD INTL (PAE)

ILS Z RWY 16R (SA CAT II)

NW-1, 10 JUL 2025 to 07 AUG 2025

NW-1, 10 JUL 2025 to 07 AUG 2025

EVERETT, WASHINGTON

AL-142 (FAA)

25219

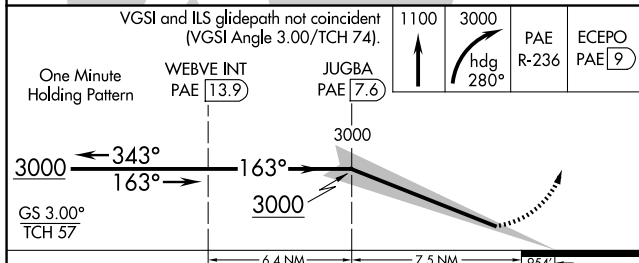
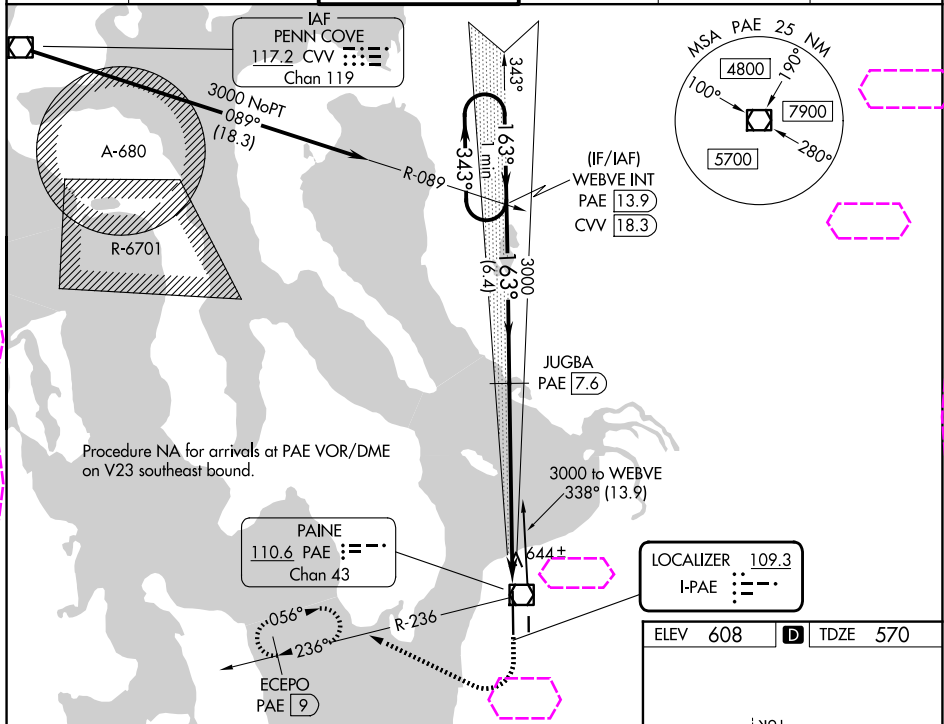
LOC I-PAE 109.3	APP CRS 163°	Rwy Ldg TDZE Apt Elev	9010 570 608
---------------------------	------------------------	-----------------------------	---

ILS Z RWY 16R (SA CAT II)

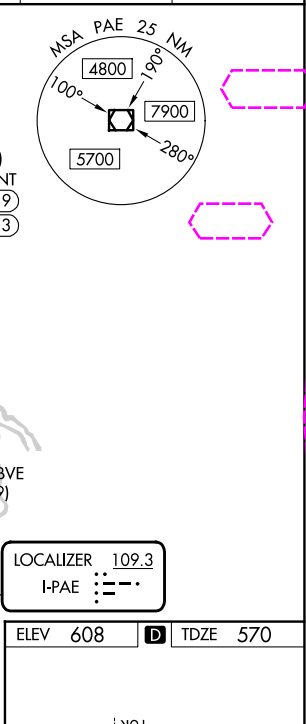
SEATTLE PAINE FLD INTL (PAE)

<p>▼ DME required. Reduced Lighting: Requires specific OPSPEC, MSPEC, or LOA approval and use of autoland or HUD to touchdown.</p> <p>▲ DME from PAE VOR/DME. Simultaneous reception of I-PAE and PAE DME required. Procedure NA when control tower closed.</p>	<p>MALSR</p> <p>A5</p>	<p>MISSED APPROACH: Climb to 1100 then climbing right turn to 3000 on heading 280° and PAE VOR/DME R-236 to ECEPO/PAE 9 DME and hold, continue climb-in-hold to 3000.</p>
---	--------------------------------------	--

ATIS 128.65	SEATTLE APP CON 128.5 306.9	PAINE TOWER ★ 132.95 (CTAF) 0 256.7	GND CON 121.8 339.8	CLNC DEL 127.175	UNICOM 122.95
-----------------------	---------------------------------------	---	-------------------------------	----------------------------	-------------------------



CATEGORY	A	B	C	D
S-ILS 16R	RA 116/12 100 DA 670			



SA CATEGORY II ILS - SPECIAL AIRCREW & AIRCRAFT CERTIFICATION REQUIRED		<p>TDZ/CL Rwy 16R</p> <p>HIRL Rwy 16R-34L</p> <p>REIL Rws 16L and 34R</p> <p>MIRL Rwy 16L-34R</p>
---	--	---

EVERETT, WASHINGTON

Amdt 1A 01FEB18

47°54'N-122°17'W

SEATTLE PAINE FLD INTL (PAE)

ILS Z RWY 16R (SA CAT II)

NW-1, 07 AUG 2025 to 04 SEP 2025

NW-1, 07 AUG 2025 to 04 SEP 2025