


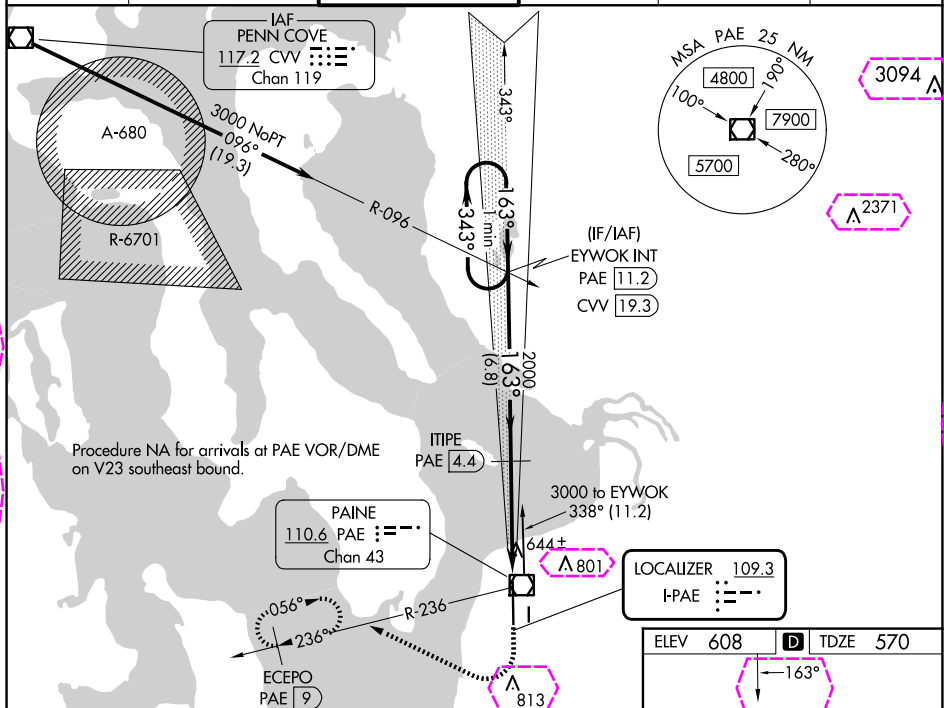


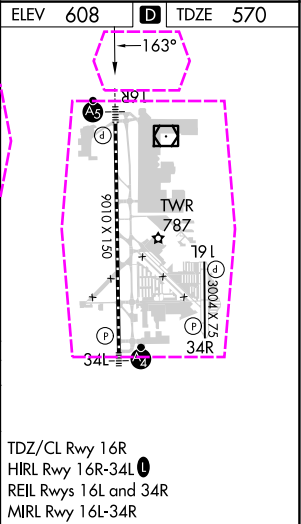
LOC I-PAE <u>109.3</u>	APP CRS 163°	Rwy Idg TDZE Apt Elev	9010 570 608
----------------------------------	------------------------	-----------------------------	---

ILS Y or LOC Y RWY 16R
SEATTLE PAINE FLD INTL (PAE)

 	Circling Rwy 34R NA at night. DME required. DME from PAE VOR/DME. Simultaneous reception of I-PAE and PAE DME required.		MALSR 	MISSED APPROACH: Climb to 1100 then climbing right turn to 2000 on heading 280° and PAE VOR/DME R-236 to ECEPO/PAE 9 DME and hold.		
	ATIS 128.65	SEATTLE APP CON 128.5 306.9	PAINE TOWER ★ 132.95 (CTAF) 0 256.7	GND CON 121.8 339.8	CLNC DEL 127.175	UNICOM 122.95



<p>VGSI and ILS glidepath not coincident (VGSI Angle 3.00/TCH 74).</p> <p>One Minute Holding Pattern</p> <p>EYWOK INT PAE 11.2</p> <p>CVV 19.3</p> <p>1100</p> <p>2000</p> <p>hdg 280°</p> <p>PAE R-236</p> <p>ECEPO PAE 9</p>				
<p>3000 ← 343° → 163°</p> <p>GS 3.00° TCH 57</p> <p>163°</p> <p>2000</p> <p>PAE 4.4</p> <p>2000</p> <p>PAE 0.3</p> <p>6.8 NM</p> <p>4.3 NM</p>				
CATEGORY	A	B	C	D
S-ILS 16R	770/18	200 (200-½)		NA
S-LOC 16R	940/24	370 (400-½)		NA
CIRCLING	1100-1	492 (500-1)		NA



EVERETT, WASHINGTON

AL-142 (FAA)

25219

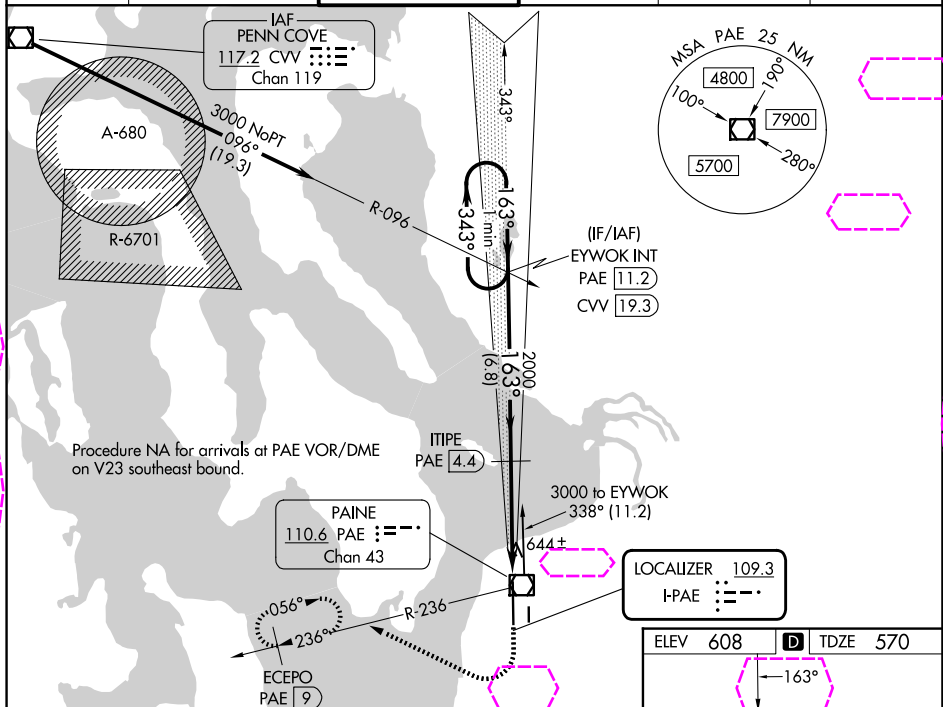
LOC I-PAE 109.3	APP CRS 163°	Rwy Ldg TDZE Apt Elev	9010 570 608
---------------------------	------------------------	-----------------------------	---

ILS Y or LOC Y RWY 16R

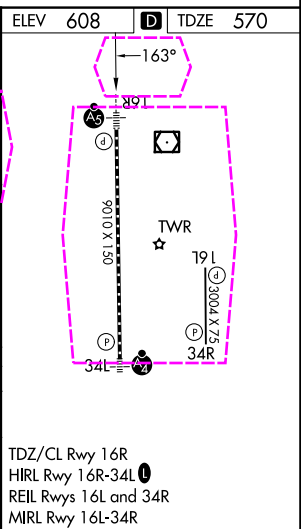
SEATTLE PAINE FLD INTL (PAE)

7 A Circling Rwy 34R NA at night. DME required. DME from PAE VOR/DME. Simultaneous reception of I-PAE and PAE DME required.	MALSR 	MISSED APPROACH: Climb to 1100 then climbing right turn to 2000 on heading 280° and PAE VOR/DME R-236 to ECEPO/PAE 9 DME and hold.
---	-----------	--

ATIS 128.65	SEATTLE APP CON 128.5 306.9	PAINE TOWER ★ 132.95 (CTAF) 0 256.7	GND CON 121.8 339.8	CLNC DEL 127.175	UNICOM 122.95
-----------------------	---------------------------------------	---	-------------------------------	----------------------------	-------------------------



VGSI and ILS glidepath not coincident (VGSI Angle 3.00/TCH 74).			
One Minute Holding Pattern			
EYWOK INT PAE 11.2 CVV 19.3			
3000 ← 343° → 163° → 2000			
GS 3.00° TCH 57			
2000			
PAE 0.3			
6.8 NM 4.3 NM			
CATEGORY	A	B	D
S-ILS 16R	770/18	200 (200-½)	NA
S-LOC 16R	940/24	370 (400-½)	NA
CIRCLING	1100-1	492 (500-1)	NA



EVERETT, WASHINGTON
Amdt 23 07DEC17

47°54'N-122°17'W

SEATTLE PAINE FLD INTL (PAE)

ILS Y or LOC Y RWY 16R

NW-1, 07 AUG 2025 to 04 SEP 2025

NW-1, 07 AUG 2025 to 04 SEP 2025