

ELMIRA/CORNING, NEW YORK

AL-131 (FAA)

25163

WAAS CH 42827 W06A	APP CRS 062°	Rwy Ldg TDZE Apt Elev	7401 944 955
--	------------------------	-----------------------------	---

RNAV (GPS) RWY 6

ELMIRA/CORNING RGNL (ELM)

RNP APCH.

▼

⚠

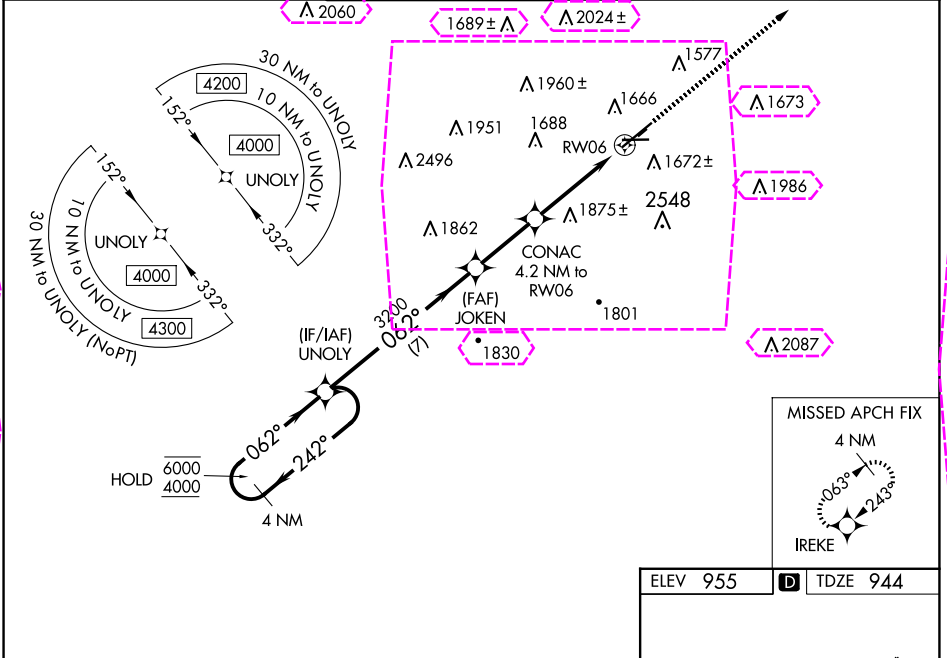
❄ -22°C

Inop table does not apply to LNAV/VNAV all Cats. Circling Rwy 10 NA at night. Circling NA to Rwys 5 and 23. Circling NA for Cat D south of Rwys 10 and 28. For uncompensated Baro-VNAV systems, LNAV/VNAV NA below -21°C or above 54°C. # RVR 1800 authorized with use of FD or AP or HUD to DA.

MALS

MISSED APPROACH:
Climb to 4000 direct
IREKE and hold.

ATIS 125.475	ELMIRA APP CON ★ 128.425 257.8	ELMIRA TOWER ★ 121.1 (CTAF) 0 257.8	GND CON 121.9	CLNC DEL 121.9	UNICOM 122.95
------------------------	--	---	-------------------------	--------------------------	-------------------------



4 NM Holding Pattern UNOLY

JOKEN

CONAC 4.2 NM to RW06

IREKE

* INAV only

GP 3.00° TCH 52

7 NM 2.8 NM 1.2 NM 3 NM

CATEGORY	A	B	C	D
LPV DA #	1144/24		200 (200-1/2)	
LNNAV/VNAV DA	2138-5		1194 (1200-5)	
LNNAV MDA	1940/40 996 (1000-3/4)	1940/55 996 (1000-1)	1940-2 1/2	996 (1000-2 1/2)
CIRCLING	2020-1 1/4 1065 (1100-1 1/4)	2080-1 1/2 1125 (1200-1 1/2)	2100-3 1145 (1200-3)	2340-3 1385 (1400-3)

HIRL Rwy 6-24 0

MIRL Rwy 10-28 0

REIL Rwys 6 and 24

ELMIRA/CORNING, NEW YORK
Amdt 3 31DEC20

42°10'N-76°54'W

RNAV (GPS) RWY 6

ELMIRA/CORNING, NEW YORK

AL-131 (FAA)

25219

WAAS CH 42827 W06A	APP CRS 062°	Rwy Ldg TDZE Apt Elev	7401 944 955
--	------------------------	-----------------------------	---

RNAV (GPS) RWY 6

ELMIRA/CORNING RGNL (ELM)

RNP APCH.

▼

⚠

❄ -21°C

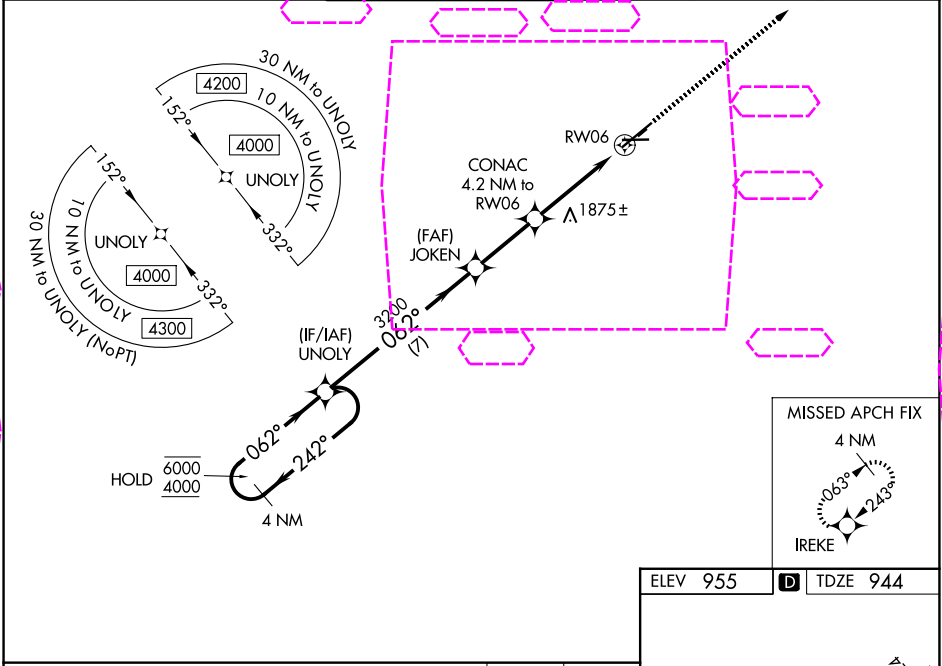
Inop table does not apply to LNAV/VNAV all Cats. Circling Rwy 10 NA at night. Circling NA to Rwys 5 and 23. Circling NA for Cat D south of Rwys 10 and 28. For uncompensated Baro-VNAV systems, LNAV/VNAV NA below -21°C or above 54°C. # RVR 1800 authorized with use of FD or AP or HUD to DA.

MALS R

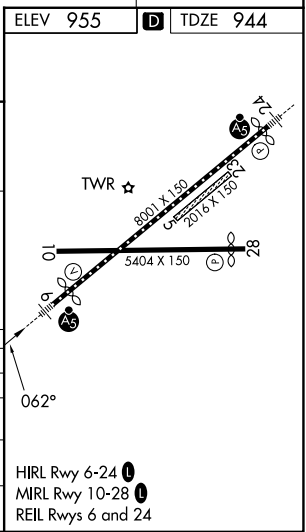
MISSED APPROACH:

Climb to 4000 direct IREKE and hold.

ATIS 125.475	ELMIRA APP CON ★ 128.425 257.8	ELMIRA TOWER ★ 121.1 (CTAF) 0 257.8	GND CON 121.9	CLNC DEL 121.9	UNICOM 122.95
------------------------	--	---	-------------------------	--------------------------	-------------------------



4 NM Holding Pattern		UNOLY	JOKEN	CONAC	4000	IREKE
6000 ← 242°		062° →	3200	4.2 NM to RW06	↑	★
GP 3.00° TCH 52		062°	3200	* 3 NM to RW06	* INAV only	
		3200	* 2320	RW06		
		7 NM	2.8 NM	1.2 NM	3 NM	
CATEGORY	A	B	C	D		
LPV DA #	1144/24		200 (200-½)			
LNAV/VNAV DA	2138-5		1194 (1200-5)			
LNAV MDA	1940/40 996 (1000-¾)	1940/55 996 (1000-1)	1940-2½	996 (1000-2½)		
CIRCLING	2020-1¼ 1065 (1100-1¼)	2080-1½ 1125 (1200-1½)	2100-3 1145 (1200-3)	2340-3 1385 (1400-3)		



ELMIRA/CORNING, NEW YORK
Amdt 3 31DEC20

42°10'N-76°54'W

RNAV (GPS) RWY 6