

ELMIRA/CORNING, NEW YORK

AL-131 (FAA)

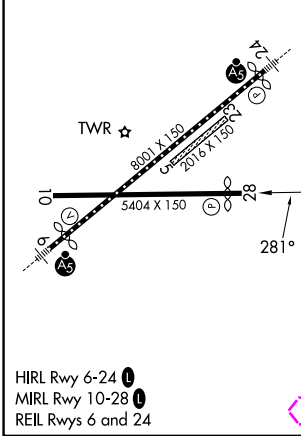
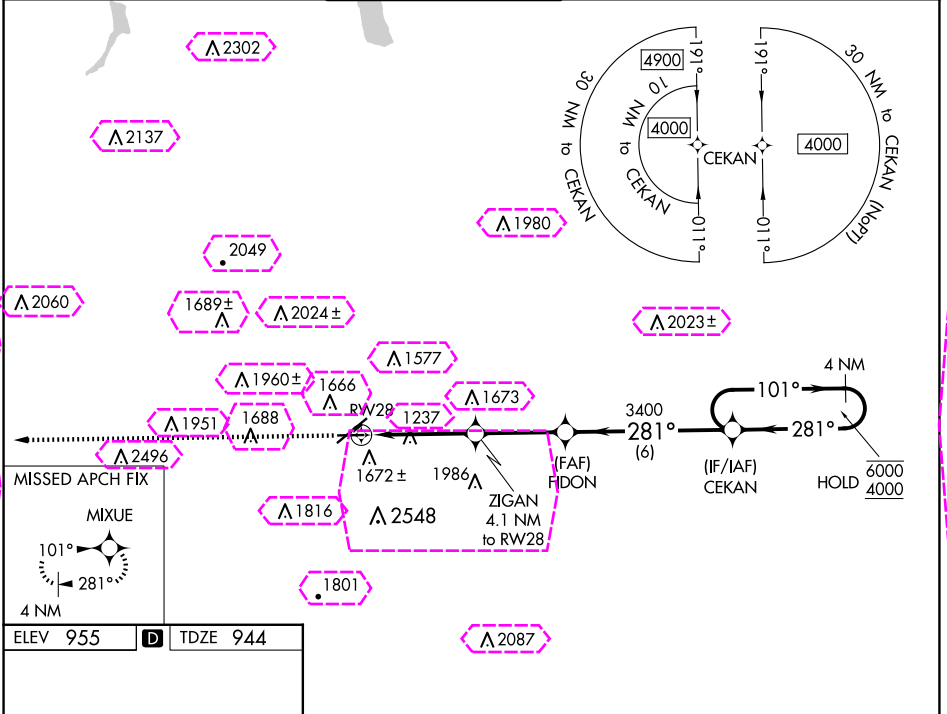
25163

WAAS CH <b>77730</b> <b>W28A</b>	APP CRS <b>281°</b>	Rwy Ldg TDZE Apt Elev	<b>5002</b> <b>944</b> <b>955</b>
--	------------------------	-----------------------------	---

# RNAV (GPS) RWY 28

ELMIRA/CORNING RGNL (ELM)

RNP APCH.			MISSED APPROACH: Climb to 4000 direct MIXUE and hold.		
Circling NA for Cat D south of Rwys 10 and 28. Rwy 28 helicopter visibility reduction below ¾ SM NA. Circling Rwy 10 NA at night. Circling NA to Rwys 5 and 23.					
-22°C					
ATIS 125.475	ELMIRA APP CON ★ 128.425 257.8	ELMIRA TOWER ★ 121.1 (CTAF) 0 257.8	GND CON 121.9	CLNC DEL 121.9	UNICOM 122.95



4000	MIXUE	Visual Segment - Obstacles.		4 NM
↑	✧			Holding Pattern
ZIGAN 4.1 NM to RW28		FIDON	CEKAN	101° → 6000 ← 281° 4000
1.7 NM to RW28		2320	3400	
RW28		2.4 NM	3.2 NM	6 NM
CATEGORY	A	B	C	D
LP MDA	1540-1	596 (600-1)	1540-1¾	596 (600-1¾)
LNAV MDA	1960-1¼ 1016 (1100-1¼)	1960-1½ 1016 (1100-1½)	1960-3	1016 (1100-3)
<b>CIRCLING</b>	2020-1¼ 1065 (1100-1¼)	2080-1½ 1125 (1200-1½)	2100-3 1145 (1200-3)	2340-3 1385 (1400-3)

ELMIRA/CORNING, NEW YORK  
Amdt 3C 31DEC20

42°10'N-76°54'W

# ELMIRA/CORNING RGNL (ELM)

## RNAV (GPS) RWY 28

ELMIRA/CORNING, NEW YORK

AL-131 (FAA)

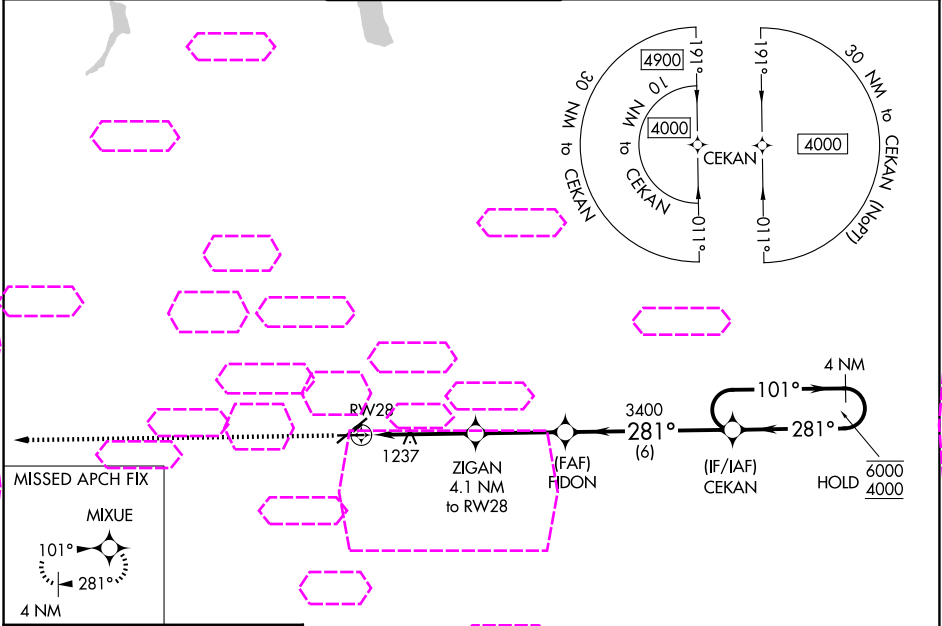
25219

WAAS CH <b>77730</b> <b>W28A</b>	APP CRS <b>281°</b>	Rwy Ldg TDZE <b>944</b> Apt Elev <b>955</b>
--	------------------------	---

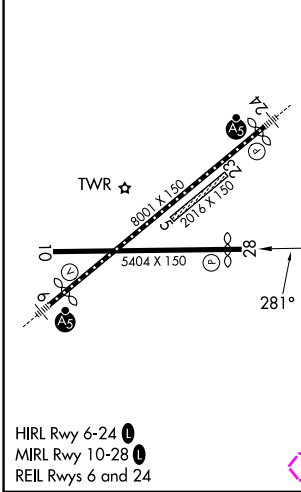
**RNAV (GPS) RWY 28**  
ELMIRA/CORNING RGNL (ELM)



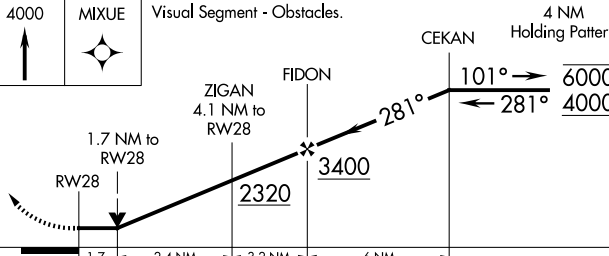
RNP APCH.	<p>▼ ▲ 33 -21°C</p> <p>Circling NA for Cat D south of Rwy 10 and 28. Rwy 28 helicopter visibility reduction below ¾ SM NA. Circling Rwy 10 NA at night. Circling NA to Rwy 5 and 23.</p>	MISSED APPROACH: Climb to 4000 direct MIXUE and hold.
-----------	--	---

ATIS <b>125.475</b>	ELMIRA APP CON ★ <b>128.425 257.8</b>	ELMIRA TOWER ★ <b>121.1 (CTAF) 0 257.8</b>	GND CON <b>121.9</b>	CLNC DEL <b>121.9</b>	UNICOM <b>122.95</b>
------------------------	--	---	-------------------------	--------------------------	-------------------------



ELEV 955	D	TDZE 944
----------	---	----------



4000		MIXUE		Visual Segment - Obstacles.				4 NM Holding Pattern	
									
RW28		1.7 NM to RW28		ZIGAN 4.1 NM to RW28		FIDON		CEKAN	
1.7		2.4 NM		3.2 NM		6 NM			
CATEGORY		A		B		C		D	
LP	MDA	1540-1		596 (600-1)		1540-1¾		596 (600-1¾)	
LNAV	MDA	1960-1¼ 1016 (1100-1¼)		1960-1½ 1016 (1100-1½)		1960-3		1016 (1100-3)	
CIRCLING		2020-1¼ 1065 (1100-1¼)		2080-1½ 1125 (1200-1½)		2100-3 1145 (1200-3)		2340-3 1385 (1400-3)	

ELMIRA/CORNING, NEW YORK  
Amdt 3C 31DEC20

42°10'N-76°54'W

ELMIRA/CORNING RGNL (ELM)  
**RNAV (GPS) RWY 28**

NE-2, 07 AUG 2025 to 04 SEP 2025

NE-2, 07 AUG 2025 to 04 SEP 2025