

RNAV (GPS) RWY 24

ELMIRA/CORNING, NEW YORK

AL-131 (FAA)

25219

WAAS CH 99527 W24A	APP CRS 242°	Rwy Ldg TDZE 955 Apt Elev 955	7799 955 955
--	------------------------	---	---

RNAV (GPS) RWY 24

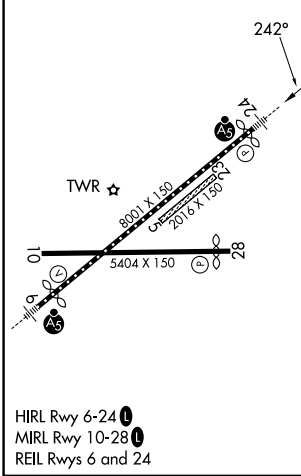
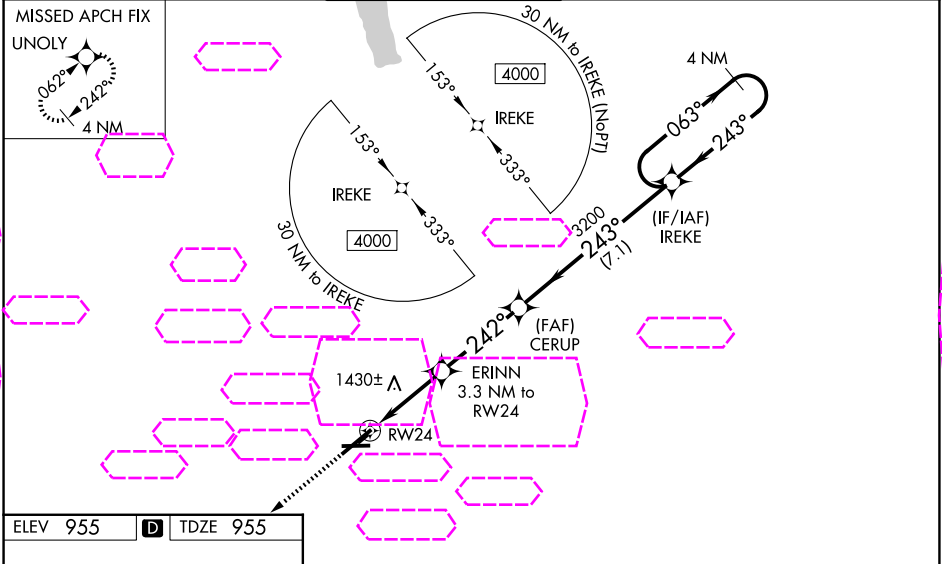
ELMIRA/CORNING RGNL (ELM)

⚠ Circling Rwy 10 NA at night. Circling NA for Cat D south of Rwy 10-28. Circling NA to Rwy 5 and 23. DME/DME RNP-0.3 NA. For uncompensated Baro-VNAV systems, LNAV/VNAV NA below -20°C (-4°F) or above 54°C (130°F). When local altimeter setting not received, use Penn Yan altimeter setting and increase all DA 73 feet and all MDA 80, and increase LPV all Cats and LNAV Cats C/D visibility ¼ mile and LNAV/VNAV all Cats visibility 1½ mile; inop table does not apply to LNAV/VNAV all Cats; for inop MALSR, increase LPV DA** all Cats visibility to ¾ and LPV all Cats visibility to 1½. Baro-VNAV and VDP NA when using Penn Yan altimeter setting. For inop MALSR, increase LNAV Cats C/D visibility to 2½ mile. **Missed approach requires a minimum climb of 260 feet per NM to 2300. **RVR 1800 authorized with use of FD or AP or HUD to DA, NA when using Penn Yan altimeter setting.

MALSR

MISSED APPROACH:
Climb to 4000 direct UNOLY and hold.

ATIS 125.475	ELMIRA APP CON ★ 128.425 257.8	ELMIRA TOWER ★ 121.1 (CTAF) 0 257.8	GND CON 121.9	CLNC DEL 121.9	UNICOM 122.95
------------------------	--	---	-------------------------	--------------------------	-------------------------



ELEV 955	D	TDZE 955
4000	UNOLY	
*LNAV only		
RW24	ERINNE 3.3 NM to RW24	CERUP 3200
*2.3 NM to RW24		
*2040		
3200		
GP 3.00° TCH 53		
-2.3 NM - 1 NM - 3.6 NM - 7.1 NM		
CATEGORY	A	B
LPV DA**	1155/24	200 (200-1/2)
LPV DA	1348/45	393 (400-7/8)
LNAV/VNAV DA	1807-2 1/2	852 (900-2 1/2)
LNAV MDA	1740/24 785 (800-1/2)	1740/40 785 (800-3/4)
CIRCLING	2100-1 1/4 1145 (1200-1 1/4)	2100-1 1/2 1145 (1200-1 1/2)
	2120-3 1165 (1200-3)	2340-3 1385 (1400-3)

ELMIRA/CORNING, NEW YORK
Amdt 2C 07OCT21

42°10'N-76°54'W

ELMIRA/CORNING RGNL (ELM) RNAV (GPS) RWY 24

NE-2, 07 AUG 2025 to 04 SEP 2025

NE-2, 07 AUG 2025 to 04 SEP 2025