

ELMIRA/CORNING, NEW YORK

AL-131 (FAA)

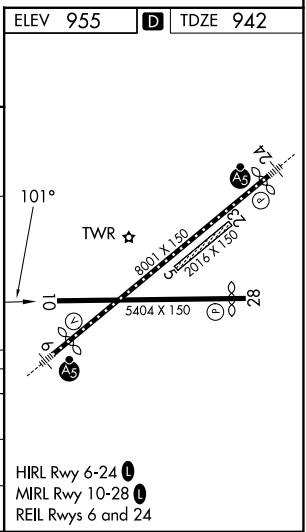
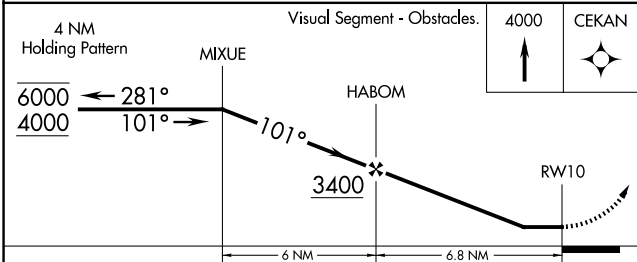
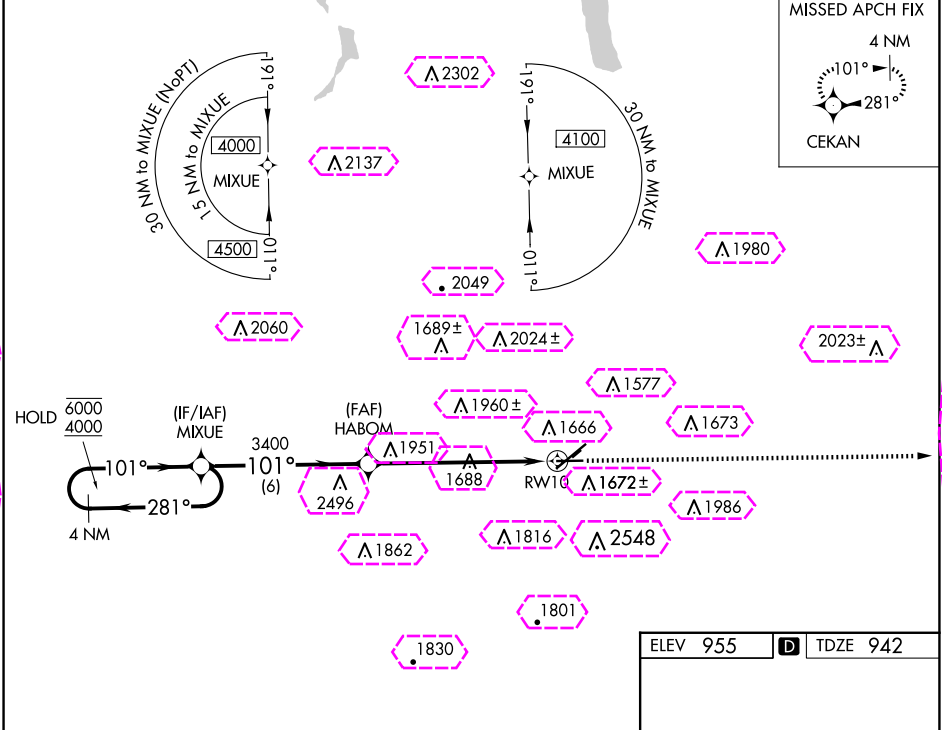
25163

WAAS CH 70530 W10A	APP CRS 101°	Rwy Ldg TDZE 942 Apt Elev 955
--	------------------------	---

RNAV (GPS) RWY 10

ELMIRA/CORNING RGNL (ELM)

RNP APCH.		MISSED APPROACH: Climb to 4000 direct CEKAN and hold.	
CIRCLING NA to Rws 5 and 23. Procedure NA at night. Rwy 10 helicopter visibility reduction below 1 SM NA. Circling NA for Cat D south of Rws 10 and 28.			
ATIS 125.475	ELMIRA APP CON ★ 128.425 257.8	ELMIRA TOWER ★ 121.1 (CTAF) 257.8	GND CON 121.9
		CLNC DEL 121.9	UNICOM 122.95



CATEGORY	A	B	C	D
LP MDA	2280-1¼ 1338 (1400-1¼)	2280-1½ 1338 (1400-1½)	2280-3	1338 (1400-3)
LNAV MDA	2280-1¼ 1338 (1400-1¼)	2280-1½ 1338 (1400-1½)	2280-3	1338 (1400-3)
CIRCLING	2280-1¼ 1325 (1400-1¼)	2280-1½ 1325 (1400-1½)	2280-3 1325 (1400-3)	2340-3 1385 (1400-3)

ELMIRA/CORNING, NEW YORK
Amdt 2B 31DEC20

42°10'N-76°54'W

ELMIRA/CORNING RGNL (ELM)
RNAV (GPS) RWY 10

ELMIRA/CORNING, NEW YORK

AL-131 (FAA)

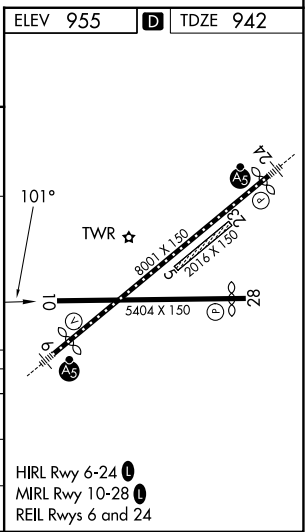
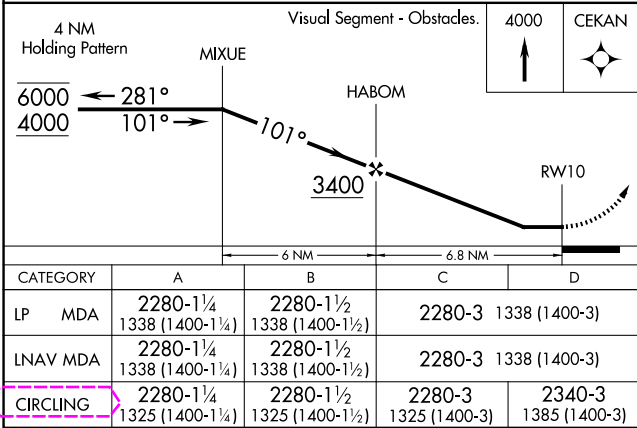
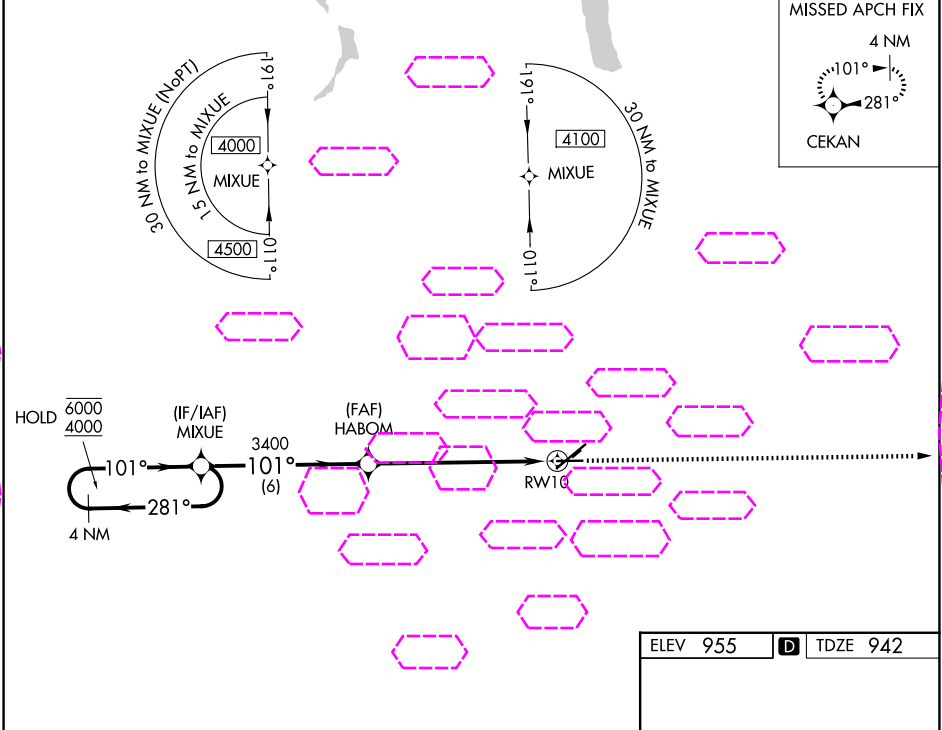
25219

WAAS CH 70530 W10A	APP CRS 101°	Rwy Ldg TDZE 942 Apt Elev 955	5004
--	------------------------	---	-------------

RNAV (GPS) RWY 10

ELMIRA/CORNING RGNL (ELM)

RNP APCH.		MISSED APPROACH: Climb to 4000 direct CEKAN and hold.	
Circling NA to Rws 5 and 23. Procedure NA at night. Rwy 10 helicopter visibility reduction below 1 SM NA. Circling NA for Cat D south of Rws 10 and 28.			
ATIS 125.475	ELMIRA APP CON ★ 128.425 257.8	ELMIRA TOWER ★ 121.1 (CTAF) 0 257.8	GND CON 121.9
		CLNC DEL 121.9	UNICOM 122.95



ELMIRA/CORNING, NEW YORK		ELMIRA/CORNING RGNL (ELM)	
Amdt 2B 31DEC20		42°10'N-76°54'W	
		RNP (GPS) RWY 10	