

ELMIRA/CORNING, NEW YORK

AL-131 (FAA)

25163

LOC I-UEK	APP CRS	Rwy Ldg	7401
109.1	062°	TDZE	944
		Apt Elev	955

# ILS or LOC RWY 6

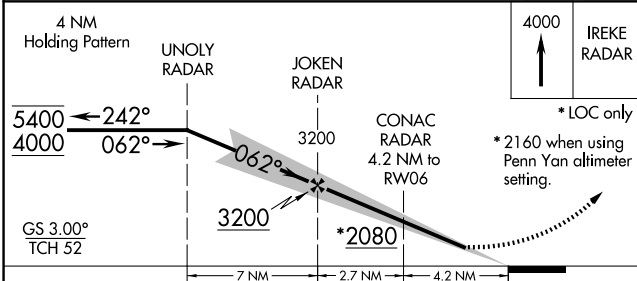
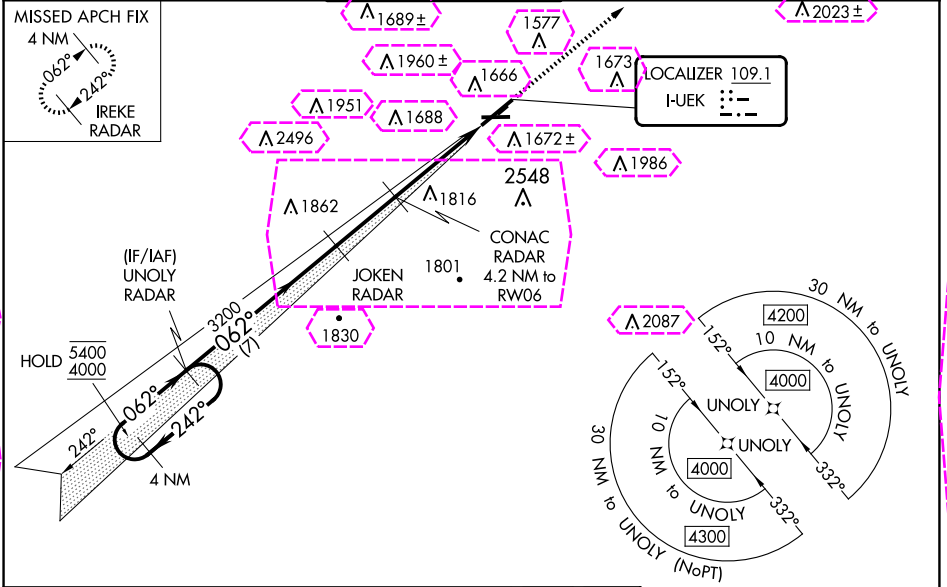
ELMIRA/CORNING RGNL (ELM)

**⚠** Inop table does not apply to S-LOC 6 Cats C/D. Circling NA to Rwy's 5 and 23. Circling NA for Cat D south of Rwy's 10 and 28. Circling Rwy 10 NA at night. For inop ALS, increase S-LOC 6 CONAC fix minimums Cats C/D visibility to 2½ SM. \*\* RVR 1800 authorized with use of FD or AP or HUD to DA.

**MALSR**

**MISSED APPROACH:**  
Climb to 4000 direct  
IREKE/RADAR and  
hold.

ATIS 125.475	ELMIRA APP CON ★ 128.425 257.8	ELMIRA TOWER ★ 121.1 (CTAF) 257.8	GND CON 121.9	CLNC DEL 121.9	UNICOM 122.95
-----------------	-----------------------------------	--------------------------------------	------------------	-------------------	------------------



CATEGORY	A	B	C	D
S-ILS 6 **	1144/24 200 (200-½)			
S-LOC 6	2080/40 1136 (1200-¾)	2080/55 1136 (1200-1)	2080-3	1136 (1200-3)
<b>CIRCLING</b>	2080-1¼ 1125 (1200-1½)	2080-1½	2100-3 1145 (1200-3)	2340-3 1385 (1400-3)
CONAC FIX MINIMUMS				
S-LOC 6	1740/24 796 (800-½)	1740/40 796 (800-¾)	1740-1¾	796 (800-1¼)
<b>CIRCLING</b>	2020-1¼ 1065 (1100-1¼)	2080-1½	2100-3 1145 (1200-3)	2340-3 1385 (1400-3)

ELEV 955 **D** TDZE 944

HIRL Rwy 6-24 **0**  
MIRL Rwy 10-28 **0**  
REIL Rwy's 6 and 24

**TWR** ★

**FAF to MAP 6.9 NM**

Knots	60	90	120	150	180
Min:Sec	6:54	4:36	3:27	2:46	2:18

ELMIRA/CORNING, NEW YORK  
Amdt 6 31DEC20

42°10'N-76°54'W

ELMIRA/CORNING RGNL (ELM)  
ILS or LOC RWY 6

NE-2, 10 JUL 2025 to 07 AUG 2025

NE-2, 10 JUL 2025 to 07 AUG 2025

ELMIRA/CORNING, NEW YORK

AL-131 (FAA)

25219

LOC I-UEK	APP CRS	Rwy Ldg	7401
109.1	062°	TDZE	944
		Apt Elev	955

ILS or LOC RWY 6  
ELMIRA/CORNING RGNL (ELM)

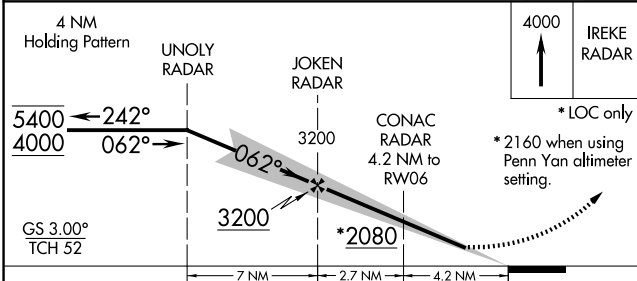
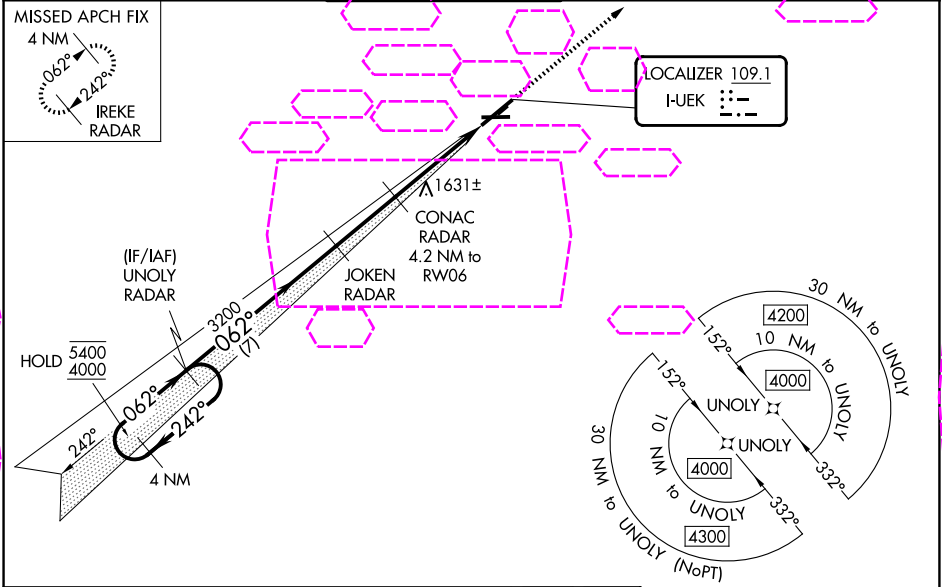
RADAR required to define JOKEN, CONAC. RNAV 1-GPS required for procedure entry.  
RNAV 1-GPS required from MAP to IREKE.

**⚠** Inop table does not apply to S-LOC 6 Cats C/D. Circling NA to Rwy 5 and 23. Circling NA for Cat D south of Rwy 10 and 28. Circling Rwy 10 NA at night. For inop ALS, increase S-LOC 6 CONAC fix minimums Cats C/D visibility to 2½ SM.  
\*\* RVR 1800 authorized with use of FD or AP or HUD to DA.

MALSR

**⚠** MISSED APPROACH: Climb to 4000 direct IREKE/RADAR and hold.

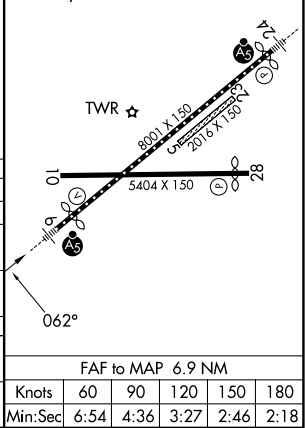
ATIS 125.475	ELMIRA APP CON ★ 128.425 257.8	ELMIRA TOWER ★ 121.1 (CTAF) 0 257.8	GND CON 121.9	CLNC DEL 121.9	UNICOM 122.95
-----------------	-----------------------------------	--	------------------	-------------------	------------------



ELEV 955	D	TDZE 944
----------	---	----------

HIRL Rwy 6-24  
MIRL Rwy 10-28  
REIL Rwy 6 and 24

CATEGORY	A	B	C	D
S-ILS 6 **	1144/24 200 (200-½)			
S-LOC 6	2080/40 1136 (1200-¾)	2080/55 1136 (1200-1)	2080-3	1136 (1200-3)
CIRCLING	2080-1¼ 1125 (1200-1½)	2080-1½ 1125 (1200-1½)	2100-3 1145 (1200-3)	2340-3 1385 (1400-3)
CONAC FIX MINIMUMS				
S-LOC 6	1740/24 796 (800-½)	1740/40 796 (800-¾)	1740-1¾ 796 (800-1¾)	
CIRCLING	2020-1¼ 1065 (1100-1¼)	2080-1½ 1125 (1200-1½)	2100-3 1145 (1200-3)	2340-3 1385 (1400-3)



ELMIRA/CORNING, NEW YORK  
Amdt 6 31DEC20

42°10'N-76°54'W

ELMIRA/CORNING RGNL (ELM)  
ILS or LOC RWY 6

NE-2, 07 AUG 2025 to 04 SEP 2025

NE-2, 07 AUG 2025 to 04 SEP 2025