

ELMIRA/CORNING, NEW YORK

AL-131 (FAA)

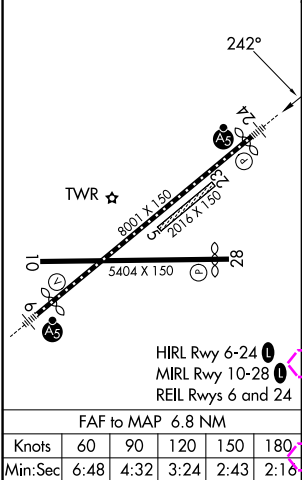
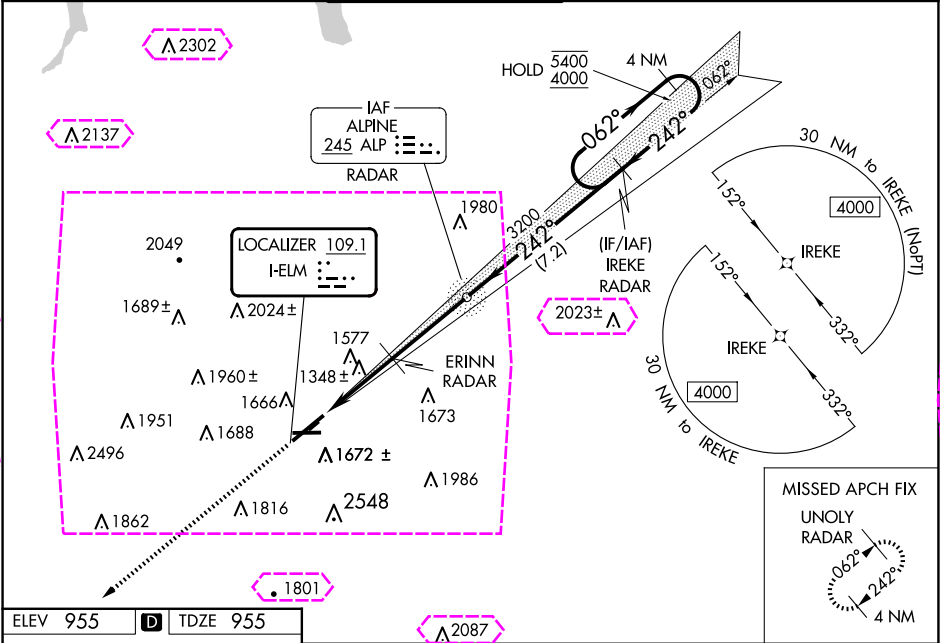
25163

LOC I-ELM	APP CRS	Rwy Ldg	7799
109.1	242°	TDZE	955
		Apt Elev	955

ILS or LOC RWY 24
ELMIRA/CORNING RGNL (ELM)

RADAR required to define ERINN. RNAV 1-GPS required from MAP to UNOLY. RNAV-1 GPS required for procedure entry. ADF or RADAR required.		MALSR 	MISSED APPROACH: Climb to 4000 direct UNOLY/RADAR and hold. ** Missed approach requires minimum climb of 260 feet per NM to 2400.
 Circling NA for Cat D south of Rwy 10 and 28. Inop table does not apply to S-LOC 24 Cats C/D. Circling NA to Rwys 5 and 23. Circling Rwy 10 NA at night. For inop ALS increase S-ILS 24 all Cats visibility to RVR 6000. ** S-ILS 24 RVR 1800 authorized with use of FD or AP or HUD to DA.			

ATIS 125.475	ELMIRA APP CON ★ 128.425 257.8	ELMIRA TOWER ★ 121.1 (CTAF) 0 257.8	GND CON 121.9	CLNC DEL 121.9	UNICOM 122.95
-----------------	-----------------------------------	--	------------------	-------------------	------------------



ELEV 955 D TDZE 955		4000 UNOLY RADAR		ALP NDB RADAR		IREKE RADAR		4 NM Holding Pattern	
* LOC only.		ERINN RADAR		3158		242°		5400 4000	
		2060*		3200				GS 3.00° TCH 53	
		3.3 NM		3.5 NM		7.2 NM			
CATEGORY		A		B		C		D	
S-ILS 24 **				1155/24		200 (200-½)			
S-ILS 24				1340/35		385 (400-¾)			
S-LOC 24		2060/40 1105 (1200-¾)		2060/55 1105 (1200-1)		2060-3 1105 (1200-3)			
		2060-1¼ 1105 (1200-1¼)		2080-1½ 1125 (1200-1½)		2100-3 1145 (1200-3)		2340-3 1385 (1400-3)	
		ERINN FIX MINIMUMS							
S-LOC 24		1600/24 645 (700-½)		1600-1¾ 645 (700-1¾)					
		2020-1¼ 1065 (1100-1¼)		2080-1½ 1125 (1200-1½)		2100-3 1145 (1200-3)		2340-3 1385 (1400-3)	

ELMIRA/CORNING, NEW YORK
Amdt 20 31DEC20

42°10'N-76°54'W

ELMIRA/CORNING RGNL (ELM)
ILS or LOC RWY 24

ELMIRA/CORNING, NEW YORK

AL-131 (FAA)

25219

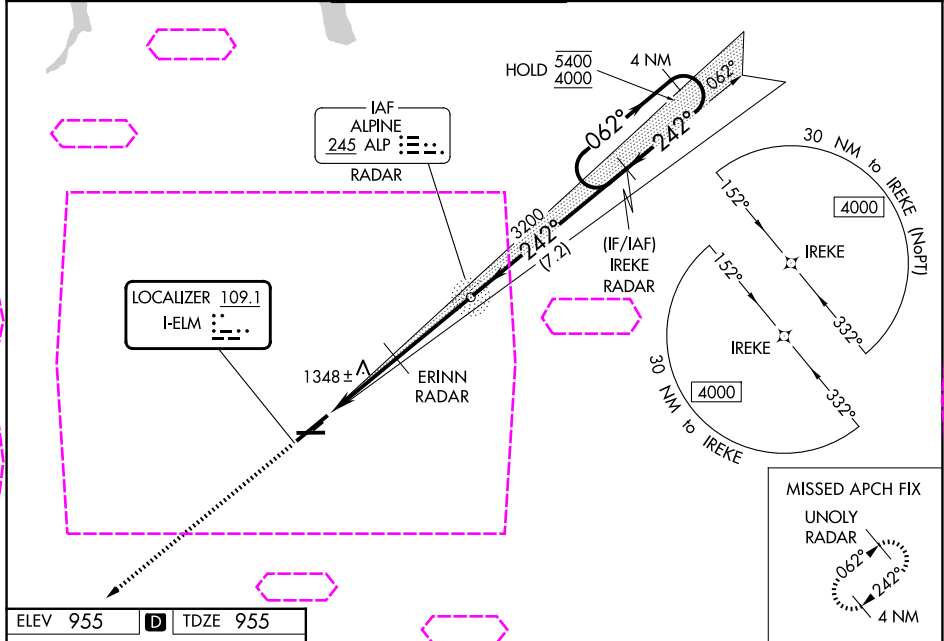
LOC I-ELM	APP CRS	Rwy Ldg	7799
109.1	242°	TDZE	955
		Apt Elev	955

ILS or LOC RWY 24

ELMIRA/CORNING RGNL (ELM)

RADAR required to define ERINN. RNAV 1-GPS required from MAP to UNOLY. RNAV-1 GPS required for procedure entry. ADF or RADAR required.		MALSR	MISSED APPROACH: Climb to 4000 direct UNOLY/RADAR and hold. ** Missed approach requires minimum climb of 260 feet per NM to 2400.
Circling NA for Cat D south of Rwy 10 and 28. Inop table does not apply to S-LOC 24 Cats C/D. Circling NA to Rwy 5 and 23. Circling Rwy 10 NA at night. For inop ALS increase S-ILS 24 all Cats visibility to RVR 6000. ** S-ILS 24 RVR 1800 authorized with use of FD or AP or HUD to DA.		AS	

ATIS	ELMIRA APP CON *	ELMIRA TOWER *	GND CON	CLNC DEL	UNICOM
125.475	128.425 257.8	121.1 (CTAF) 0 257.8	121.9	121.9	122.95



ELEV 955	D	TDZE 955
4000 UNOLY RADAR		* LOC only.
TWR		ERINN RADAR
HIRL Rwy 6-24		ALP NDB RADAR
MIRL Rwy 10-28		IREKE RADAR
REIL Rwy 6 and 24		4 NM Holding Pattern
FAF to MAP 6.8 NM		GS 3.00° TCH 53
Knots		3.3 NM
Min:Sec		3.5 NM
		7.2 NM
		CATEGORY
		A
		B
		C
		D
		S-ILS 24 **
		1155/24 200 (200-½)
		S-ILS 24
		1340/35 385 (400-¾)
		S-LOC 24
		2060/40 1105 (1200-¾)
		2060/55 1105 (1200-1)
		2060-1¼ 2100-3 2340-3
		1105 (1200-1¼) 1125 (1200-1½) 1145 (1200-3) 1385 (1400-3)
		ERINN FIX MINIMUMS
		S-LOC 24
		1600/24 645 (700-½)
		1600-1⅝ 645 (700-1¾)
		2020-1¼ 2080-1½ 2100-3 2340-3
		1065 (1100-1¼) 1125 (1200-1½) 1145 (1200-3) 1385 (1400-3)

ELMIRA/CORNING, NEW YORK

Amtd 20 31DEC20

42°10'N-76°54'W

ELMIRA/CORNING RGNL (ELM)

ILS or LOC RWY 24

NE-2, 07 AUG 2025 to 04 SEP 2025

NE-2, 07 AUG 2025 to 04 SEP 2025