

ELKO, NEVADA

AL-129 (FAA)

25163

APP CRS	Rwy Ldg	7217
057°	TDZE	5051
	Apt Elev	5140

RNAV (GPS) RWY 6

ELKO RGNL (EKO)

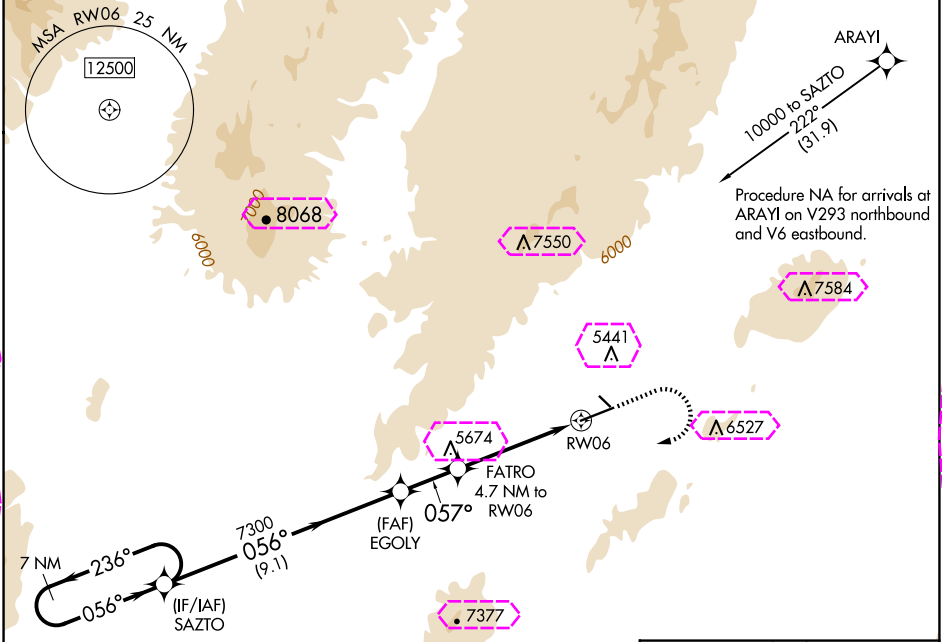
RNP APCH.

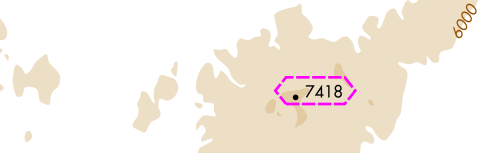
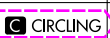
Circling Rwy 24 NA at night.
Rwy 6 helicopter visibility reduction below 3/4 SM NA.

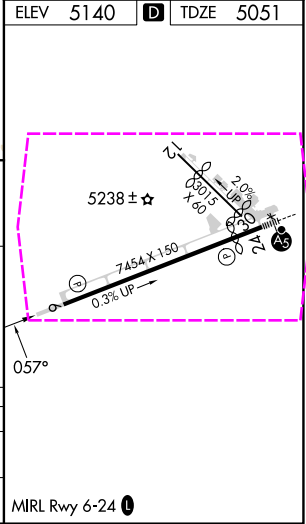
-25°C

MISSED APPROACH: Climb to 6800 then climbing right turn to 10000 direct SAZTO and hold, continue climb-in-hold to 10000.

ASOS 119.275	SALT LAKE CENTER 132.25 338.35	UNICOM 123.0 (CTAF) 0
-----------------	-----------------------------------	--------------------------



				
<div>7 NM Holding Pattern</div> <div>SAZTO</div> <div>EGOLY</div> <div>FATRO 4.7 NM to RW06</div> <div>6800</div> <div>10000</div> <div>SAZTO</div>				
<div>10000</div> <div>←236°</div> <div>056°→</div> <div>056°</div> <div>7300</div> <div>3.00° ≥ TCH 41</div> <div>057°</div> <div>6600</div> <div>3.7 NM to RW06</div> <div>RW06</div>				
<div>9.1 NM</div> <div>2.2 NM</div> <div>1 NM</div> <div>3.7 NM</div>				
CATEGORY	A	B	C	D
UNAV MDA	6280-1¼ 1229 (1200-1¼)	6280-1½ 1229 (1200-1½)	6280-3 1229 (1200-3)	
 CIRCLING	6280-1¼ 1140 (1200-1¼)	6280-1½ 1140 (1200-1½)	6640-3 1500 (1500-3)	6960-3 1820 (1900-3)



ELKO, NEVADA
Orig-A 31JAN19

40°49'N-115°47'W

ELKO RGNL (EKO)
RNAV (GPS) RWY 6

SW-4, 10 JUL 2025 to 07 AUG 2025

SW-4, 10 JUL 2025 to 07 AUG 2025

ELKO, NEVADA

AL-129 (FAA)

25219

APP CRS	Rwy Ldg	7217
057°	TDZE	5051
	Apt Elev	5140

RNAV (GPS) RWY 6

ELKO RGNL (EKO)

RNP APCH.

▼

▲

⊞

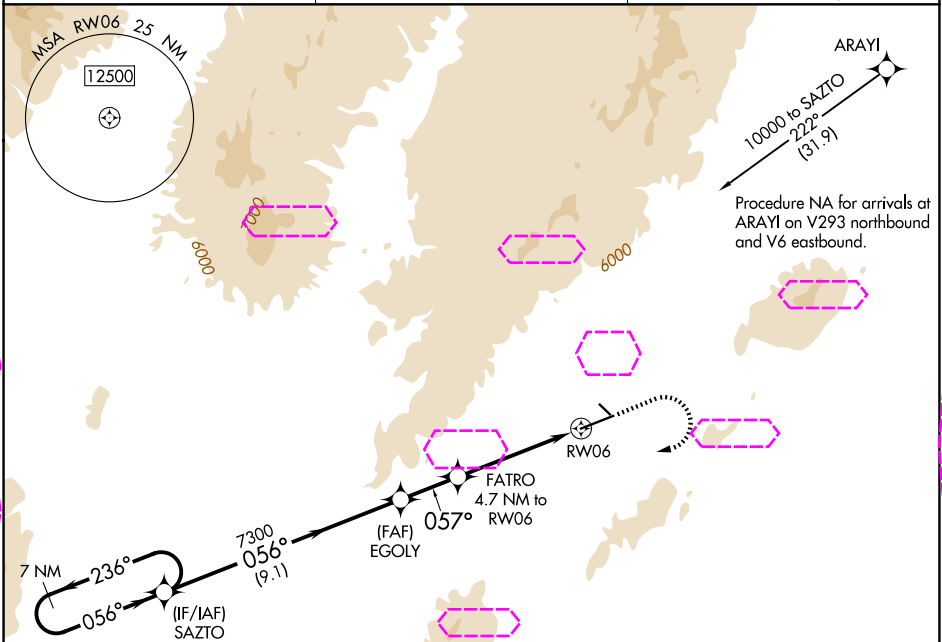
Circling Rwy 24 NA at night.

Rwy 6 helicopter visibility reduction below ¾ SM NA.

-25°C

MISSED APPROACH: Climb to 6800 then climbing right turn to 10000 direct SAZTO and hold, continue climb-in-hold to 10000.

ASOS 119.275	SALT LAKE CENTER 132.25 338.35	UNICOM 123.0 (CTAF) 0
-----------------	-----------------------------------	--------------------------



ELEV 5140

TDZE 5051

7 NM Holding Pattern

SAZTO

EGOLY

FATRO 4.7 NM to RWY 06

6800

10000

SAZTO

10000

236°

056°

056°

7300

057°

6600

057°

RWY 06

9.1 NM

2.2 NM

1 NM

3.7 NM

CATEGORY	A	B	C	D
LNNAV MDA	6280-1¼ 1229 (1200-1¼)	6280-1½ 1229 (1200-1½)	6280-3 1229 (1200-3)	
CIRCLING	6280-1¼ 1140 (1200-1¼)	6280-1½ 1140 (1200-1½)	6640-3 1500 (1500-3)	6960-3 1820 (1900-3)

MIRL Rwy 6-24

SW-4, 07 AUG 2025 to 04 SEP 2025

SW-4, 07 AUG 2025 to 04 SEP 2025

ELKO, NEVADA
Orig-A 31JAN19

40°49'N-115°47'W

RNAV (GPS) RWY 6