

ELKO, NEVADA

AL-129 (FAA)

25163

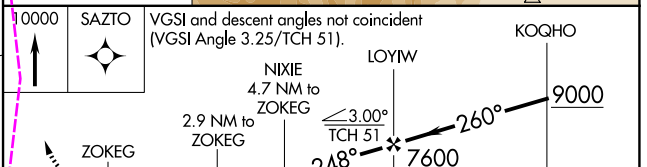
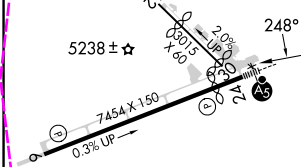
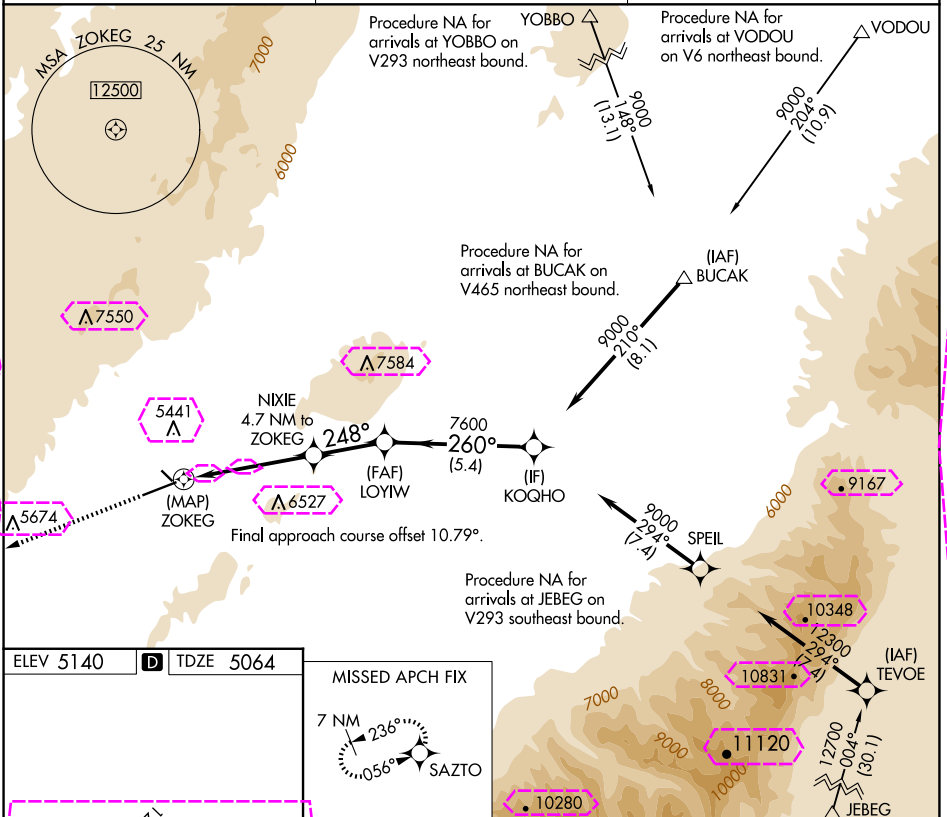
APP CRS	Rwy Ldg	6418
248°	TDZE	5064
	Apt Elev	5140

RNAV (GPS) RWY 24

ELKO RGNL (EKO)

RNP APCH.	MALS R	MISSED APPROACH: Climb to 10000 direct SAZTO and hold, continue climb-in-hold to 10000.
Inop table does not apply to Cats C/D. Circling Rwy 24 NA at night. Rwy 24 helicopter visibility reduction below 3/4 SM NA.		

ASOS 119.275	SALT LAKE CENTER 132.25 338.35	UNICOM 123.0 (CTAF) 0
-----------------	-----------------------------------	--------------------------



0000	SAZTO	VGSI and descent angles not coincident (VGSI Angle 3.25/TCH 51).		KOQHO
↑		NIXIE 4.7 NM to ZOKEG	LOYTW	9000
		2.9 NM to ZOKEG	7600	
		2.6 NM	5.4 NM	
0.5				
CATEGORY	A	B	C	D
LNAV MDA	6260-3/4 1196 (1200-3/4)	6260-1 1196 (1200-1)	6260-3 1196 (1200-3)	
	6260-1 1/4 1120 (1200-1 1/4)	6260-1 1/2 1120 (1200-1 1/2)	6640-3 1500 (1500-3)	6960-3 1820 (1900-3)

MIRL Rwy 6-24 0
ELKO, NEVADA
Amdt 1A 31JAN19

40°49'N-115°47'W

RNAV (GPS) RWY 24

ELKO RGNL (EKO)

SW-4, 10 JUL 2025 to 07 AUG 2025

SW-4, 10 JUL 2025 to 07 AUG 2025

APP CRS	Rwy Ldg	6418
248°	TDZE	5064
	Apt Elev	5140

RNAV (GPS) RWY 24

ELKO RGNL (EKO)

RNP APCH.

T
A Inop table does not apply to Cats C/D. Circling Rwy 24 NA at night. Rwy 24 helicopter visibility reduction below $\frac{3}{4}$ SM NA.

 -25°C

MAISR

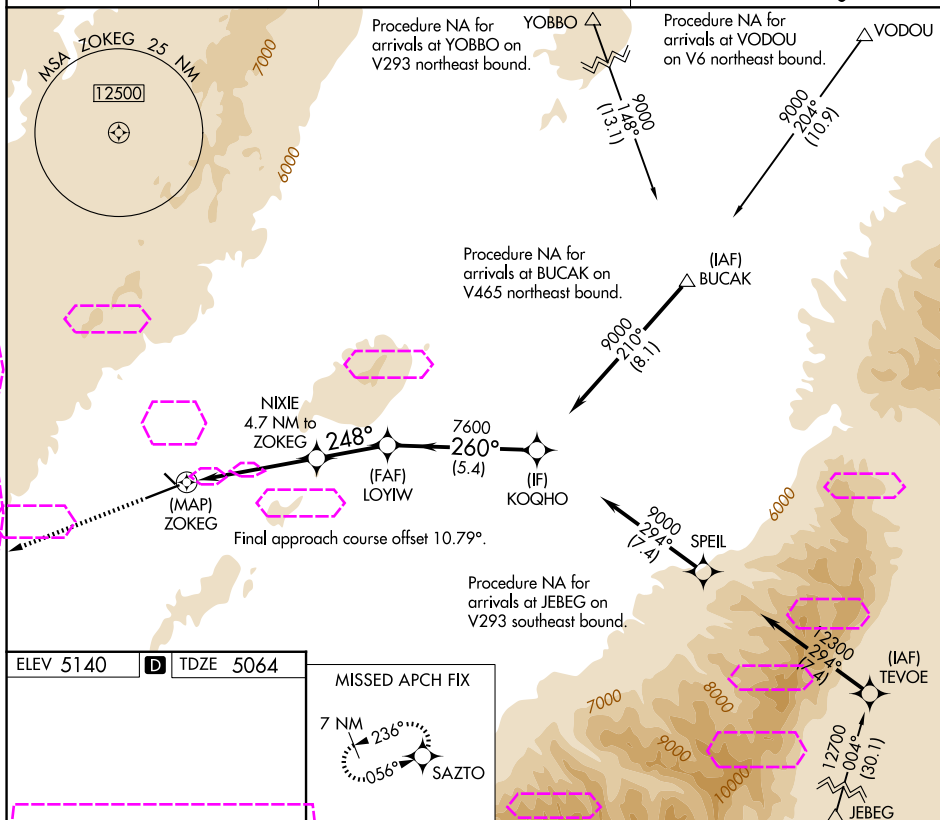


MISSED APPROACH: Climb to 10000 direct SAZTO and hold, continue climb-in-hold to 10000.

ASOS
119,275

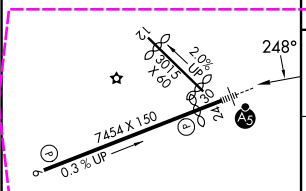
SALT LAKE CENTER	
132.25	338.35

UNICOM
123.0 (CTAF) **L**

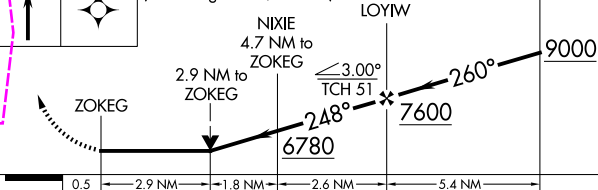


ELEV 5140	D	TDZE 5064
-----------	----------	-----------

MISSED APCH FIX



0000	SAZTO	VGSI and descent angles not coincident (VGSI Angle 3.25/TCH 51).
------	-------	--



CATEGORY	A	B	C	D
LNNAV MDA	6260- $\frac{3}{4}$ 1196 (1200- $\frac{3}{4}$)	6260-1 1196 (1200-1)	6260-3 1196 (1200-3)	
CIRCLING	6260- $\frac{1}{4}$ 1120 (1200- $\frac{1}{4}$)	6260- $\frac{1}{2}$ 1120 (1200- $\frac{1}{2}$)	6640-3 1500 (1500-3)	6960-3 1820 (1900-3)

MIRL Rwy 6-24 **L**

ELKO, NEVADA
Amdt 1A 31JAN19

ELKO RGNL (EKO)

40°49'N-115°47'W

RNAV (GPS) RWY 24

SW-4, 07 AUG 2025 to 04 SEP 2025

SW-4, 07 AUG 2025 to 04 SEP 2025